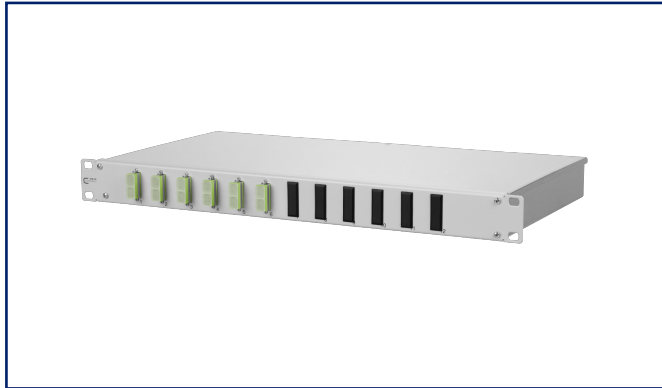


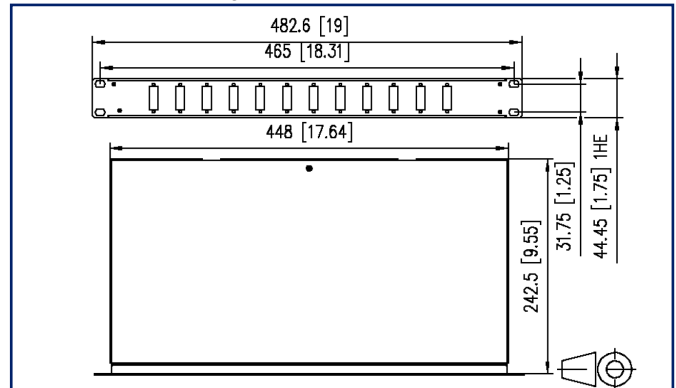
Data sheet

OpDAT fix patch panel splice 6xSC-D OM5

Illustrations



Dimensional drawing



See enlarged drawings at the end of document

Product specification

- 19 inch 1RU fiber optic patch panel for fixed installation
- equipped with SC-D adapters and SC pigtails
- pigtails with semi-tight buffered fiber dia. 0.9 mm, 12 colors, secondary and primary coating in the same color, length 2.0 m
- pigtails inserted and stripped in standard splice trays with crimp splice holders
- pigtails are cleaned and plugged in adapters
- light aluminum construction with steel sheet front plate painted (gray or black)
- unused cutouts are closed by blank plugs
- removable front plate for easy adapter mounting
- screwed on cover for easy access during service work
- several possibilities for cable entry on the back (fastening with PG13.5, PG16 and PG21 or M20 and M25)
- supplied with one M20 cable gland



P | Cabling

Data sheet

Page 2/6

OpDAT fix patch panel splice 6xSC-D OM5

P/N

150258BM06-F

EAN 4251394614205

2023/08/01

Version: A

Technical Data

General Data

Fields of application	structured building cabling office areas data center
Mechanical measurement according to MICE	M1
Ingress measurement according to MICE	I1
Climatic measurement according to MICE	C1
Electromagnetic measurement according to MICE	E3
Design	patch panel
Mounting style	1RU
Transmission technology	Fiber optic
Port numbering	yes
Color	lime green
Dimensions	
Dimension (L x W x H)	244.5 mm x 482.6 mm x 44.45 mm
Dimension (L x W x H)	9.626 in. x 19 in. x 1.75 in.
Inches	19 inches
Height unit	1RU
Number of cables/ buffered fibers	12
Fiber class	OM5
Mode type of the fiber	Multimode
Fiber construction	50/125 µm
Labeling option	printed numbers

Connections/interfaces

Number of ports interface 1	12
Number of ports interface 2	12
Number of equipped ports interface 1	6
Number of ports interface 2 equipped	6
Number of ports with dust protection interface 1	6
Number of blind	6
Semi-tight buffered fiber pigtail length	2 m
Semi-tight buffered fiber pigtail length	6.56 ft
Semi-tight buffered fiber pigtail diameter	0.9 mm
Semi-tight buffered fiber pigtail diameter	0.035 in.



Technical Data

Connections/interfaces

Cable access/outlet several possibilities for cable entry on the back

Optical characteristics

Insertion loss max. 0,4 dB

Return loss min. 35 dB

Mechanical data

Cut-out SC-D, LC-Q, ST-D

Connector type duplex

Life - Number of mating cycles min. 1000

strain relief yes

Materials and material properties

Material - Housing Al (Aluminium)

Material - Front cover sheet steel

Material - Sleeve ceramic, slotted

Material - Coupler housing Plastics

Halogen free yes

RoHS compliant

Standards/Regulations

Optical fibers: Product specifications

Sectional specification for category A1 multimode fibres ISO/IEC 60793-2-10 (A1a.4)

Optical fibers - Interconnecting devices and passive components - basic test and measuring methods

Fibre optic interconnecting devices and passive components - Insertion loss IEC 61300-3-4

Fibre optic interconnecting devices and passive components - Return loss IEC 61300-3-6

Fibre optic interconnecting devices and passive components - Visual inspection of plug end face IEC 61300-3-35

Standard colours for insulation for low-frequency cables & wires IEC 60304

P | Cabling

Data sheet

Page 4/6

OpDAT fix patch panel splice 6xSC-D OM5

P/N

150258BM06-F

EAN 4251394614205

2023/08/01

Version: A

Technical Data

Classifications

ETIM 5.0	EC001130
ETIM 6.0	EC001130
ETIM 7.0	EC001130
ETIM 8.0	EC001130
ETIM 9.0	EC001130

Packing details

Type of packaging	1 pc(s) / box
-------------------	---------------



P | Cabling

Data sheet

Page 5/6

OpDAT fix patch panel splice 6xSC-D OM5

P/N

150258BM06-F

EAN 4251394614205

2023/08/01

Version: A

Accessories

P/N	Designation
130792	Mounting kit, cage nuts M6
1502500000-E	OpDAT PF/fix patch cord tray, gray
150811M20-E	Cable gland M20 (Clamping range 7.0 to 12.0 mm)
150811M25-E	Cable gland M25 (Clamping range 10.0 to 16.0 mm)
15090401-E	OpDAT crimp splice protection (12 pieces)



P | Cabling

Data sheet

OpDAT fix patch panel splice 6xSC-D OM5

Page 6/6

P/N

150258BM06-F

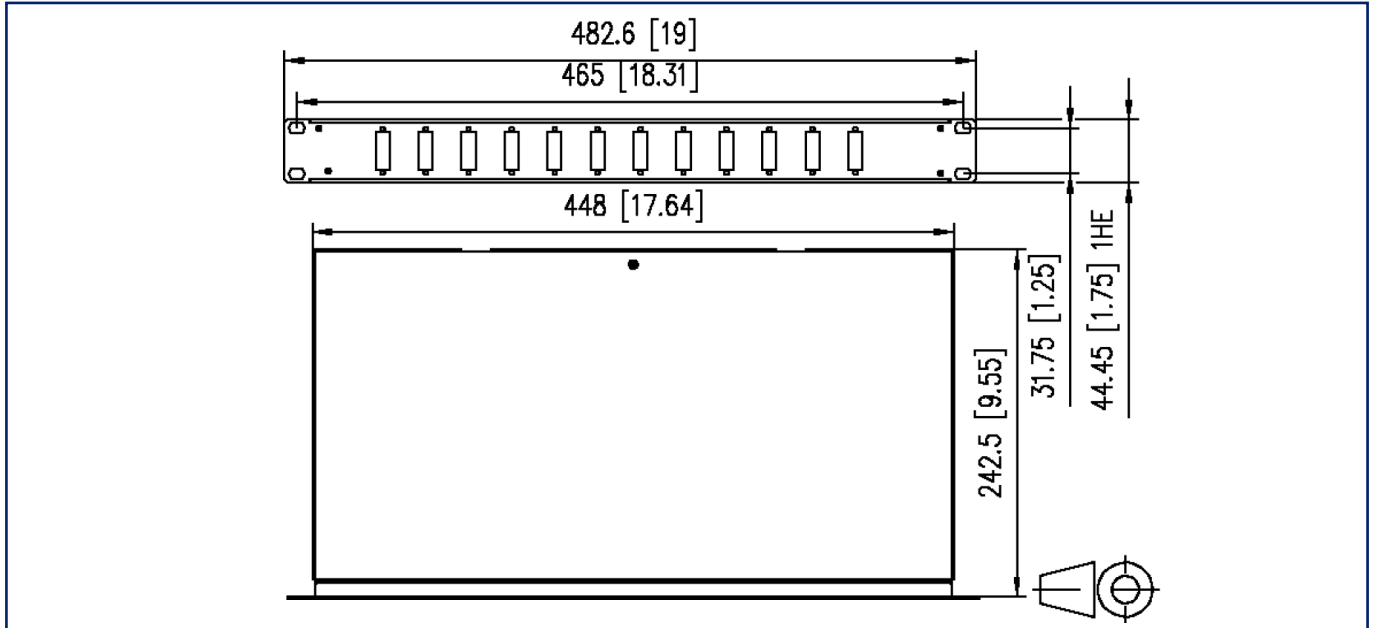
EAN 4251394614205

2023/08/01

Version: A

Illustrations

Dimensional drawing



© 2023 METZ CONNECT - Technische Änderungen vorbehalten! Subject to modifications! Sous réserve de modifications techniques!

