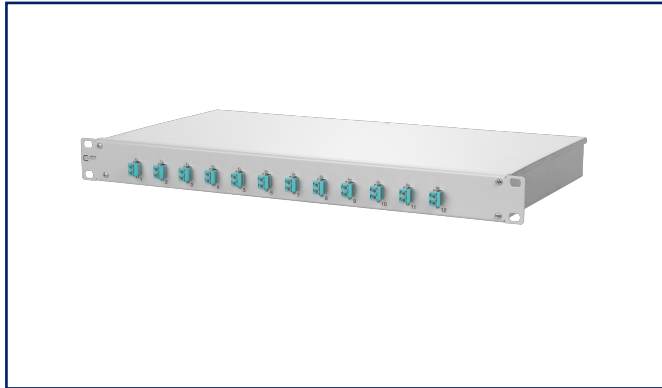


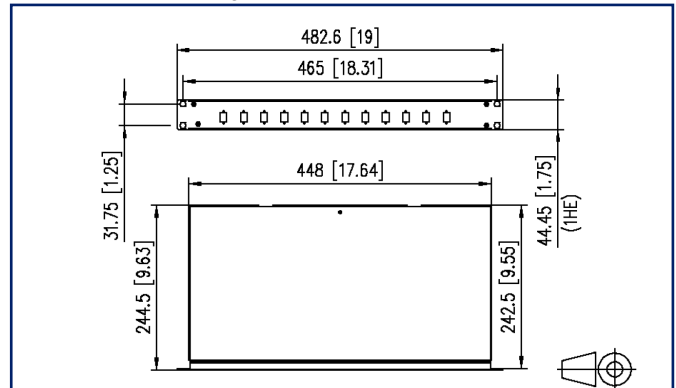
Data sheet

OpDAT fix patch panel VIK 12xLC-D OM3

Illustrations



Dimensional drawing



See enlarged drawings at the end of document

Product specification

- 19 inch 1RU fiber optic patch panel for fixed installation
- equipped with LC-D adapters
- prepared for fixation of pre-terminated installation cables (OpDAT VIK)
- light aluminium construction with steel sheet front plate painted in RAL 7035
- unused cutouts are closed by blank plugs
- removable front plate for easy adapter mounting
- screwed on cover for easy access during service work
- several possibilities for cable entry on the back (fastening with PG13.5, PG16 and PG21 or M20 and M25)
- toolless fastening of pre-assembled installation cables (OpDAT VIK) in a U-shaped cutout



P | Cabling

Data sheet

Page 2/5

OpDAT fix patch panel VIK 12xLC-D OM3

P/N

1502507712-F

EAN 4251394604169

2023/08/01

Version: A

Technical Data

General Data

Fields of application	structured building cabling office areas data center
Mechanical measurement according to MICE	M1
Ingress measurement according to MICE	I1
Climatic measurement according to MICE	C1
Electromagnetic measurement according to MICE	E3
Design	patch panel
Mounting style	1RU
Transmission technology	Fiber optic
Port numbering	yes
Color	aqua
Dimensions	
Dimension (L x W x H)	243.5 mm x 482.6 mm x 44.45 mm
Dimension (L x W x H)	9.587 in. x 19 in. x 1.75 in.
Inches	19 inches
Height unit	1RU
Installation depth	243 mm
Installation depth	9.567 in.
Fiber class	OM3
Mode type of the fiber	Multimode
Labeling option	printed numbers

Connections/interfaces

Connector technology interface 1	LC-D Couplers
Connector technology interface 2	LC-D Couplers
Number of ports interface 1	12
Number of ports interface 2	12
Number of equipped ports interface 1	12
Number of ports interface 2 equipped	12
Number of ports with dust protection interface 1	12
Number of ports with dust protection interface 2	12
Cable access/outlet	several possibilities for cable entry on the back

P | Cabling

Data sheet

Page 3/5

OpDAT fix patch panel VIK 12xLC-D OM3

P/N

1502507712-F

EAN 4251394604169

2023/08/01

Version: A

Technical Data

Mechanical data

Cut-out	SC, LC-D, E2000
Connector type	duplex
Life - Number of mating cycles	min. 1000
strain relief	yes

Materials and material properties

Material - Housing	Al (Aluminium)
Material - Front cover	sheet steel
Material - Front cover finish	powder-coated
Material - Sleeve	ceramic, slotted
Material - Coupler housing	Plastics
Halogen free	yes
RoHS	compliant

Classifications

ETIM 7.0	EC001130
ETIM 8.0	EC001130
ETIM 9.0	EC001130

Packing details

Type of packaging	1 pc(s) / box
-------------------	---------------

P | Cabling

Data sheet

Page 4/5

OpDAT fix patch panel VIK 12xLC-D OM3

P/N

1502507712-F

EAN 4251394604169

2023/08/01

Version: A

Accessories

P/N	Designation
130792	Mounting kit, cage nuts M6
1502500000-E	OpDAT PF/fix patch cord tray, gray
15081106-E	OpDAT mounting plate VIK
150811M20-E	Cable gland M20 (Clamping range 7.0 to 12.0 mm)
150811M25-E	Cable gland M25 (Clamping range 10.0 to 16.0 mm)



P | Cabling

Data sheet

OpDAT fix patch panel VIK 12xLC-D OM3

Page 5/5

P/N

1502507712-F

EAN 4251394604169

2023/08/01

Version: A

Illustrations

Dimensional drawing

