

## Data sheet

### OpDAT fix patch panel VIK 12xSC-D OS2

Page 1/5

P/N

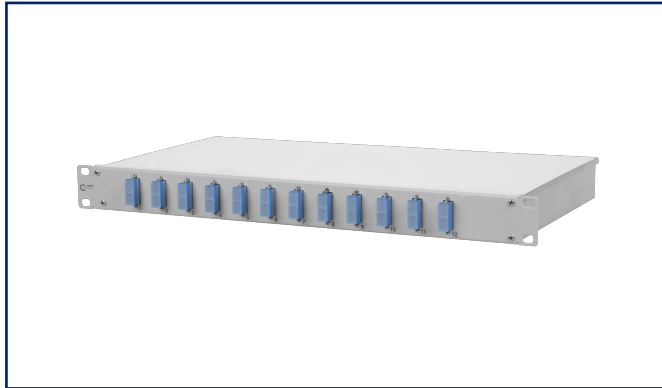
150250E212-F

EAN 4251394604947

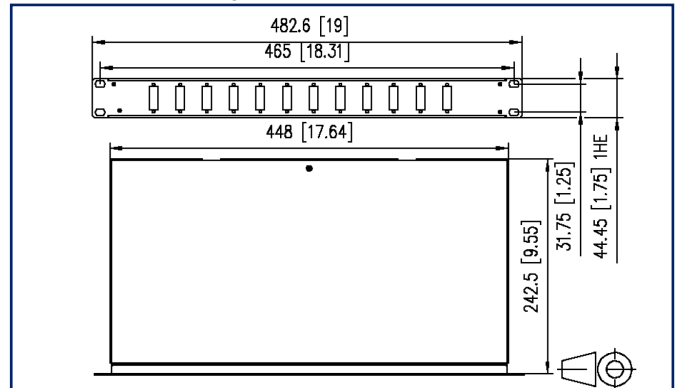
2023/08/01

Version: B

## Illustrations



Dimensional drawing



See enlarged drawings at the end of document

## Product specification

- 19 inch 1RU fiber optic patch panel for fixed installation
- equipped with SC-D adapters
- prepared for fixation of pre-terminated installation cables (OpDAT VIK)
- light aluminium construction with steel sheet front plate painted in RAL 7035
- unused cutouts are closed by blank plugs
- removable front plate for easy adapter mounting
- screwed on cover for easy access during service work
- several possibilities for cable entry on the back (fastening with PG13.5, PG16 and PG21 or M20 and M25)
- toolless fastening of pre-assembled installation cables (OpDAT VIK) in a U-shaped cutout



# P | Cabling

Data sheet

Page 2/5

## OpDAT fix patch panel VIK 12xSC-D OS2

P/N

150250E212-F

EAN 4251394604947

2023/08/01

Version: B

### Technical Data

#### General Data

Fields of application	structured building cabling office areas data center
Mechanical measurement according to MICE	M1
Ingress measurement according to MICE	I1
Climatic measurement according to MICE	C1
Electromagnetic measurement according to MICE	E3
Design	patch panel
Mounting style	1RU
Transmission technology	Fiber optic
Port numbering	yes
Color	blue
Dimensions	
Dimension (L x W x H)	242.5 mm x 482.6 mm x 44.45 mm
Dimension (L x W x H)	9.547 in. x 19 in. x 1.75 in.
Inches	19 inches
Height unit	1RU
Installation depth	243 mm
Installation depth	9.567 in.
Fiber class	OS2
Mode type of the fiber	Singlemode
Labeling option	printed numbers

#### Connections/interfaces

Connector technology interface 1	SC-D Couplers
Connector technology interface 2	SC-D Couplers
Number of ports interface 1	12
Number of ports interface 2	12
Number of equipped ports interface 1	12
Number of ports interface 2 equipped	12
Number of ports with dust protection interface 1	12
Number of ports with dust protection interface 2	12
Cable access/outlet	several possibilities for cable entry on the back

# P | Cabling

Data sheet

Page 3/5

## OpDAT fix patch panel VIK 12xSC-D OS2

P/N

150250E212-F

EAN 4251394604947

2023/08/01

Version: B

### Technical Data

#### Mechanical data

Cut-out	SC-D, LC-Q, ST-D
Connector type	duplex
strain relief	yes

#### Materials and material properties

Material - Housing	Al (Aluminium)
Material - Front cover	sheet steel
Material - Front cover finish	powder-coated
Material - Sleeve	ceramic, slotted
Material - Coupler housing	Plastics
Halogen free	yes
RoHS	compliant

#### Classifications

ETIM 7.0	EC001130
ETIM 8.0	EC001130
ETIM 9.0	EC001130

#### Packing details

Type of packaging	1 pc(s) / box
-------------------	---------------



# P | Cabling

Data sheet

Page 4/5

## OpDAT fix patch panel VIK 12xSC-D OS2

P/N

150250E212-F

EAN 4251394604947

2023/08/01

Version: B

### Accessories

P/N	Designation
130792	Mounting kit, cage nuts M6
1502500000-E	OpDAT PF/fix patch cord tray, gray
15081106-E	OpDAT mounting plate VIK
150811M20-E	Cable gland M20 (Clamping range 7.0 to 12.0 mm)
150811M25-E	Cable gland M25 (Clamping range 10.0 to 16.0 mm)



# P | Cabling

Data sheet

OpDAT fix patch panel VIK 12xSC-D OS2

Page 5/5

P/N

150250E212-F

EAN 4251394604947

2023/08/01

Version: B

## Illustrations

Dimensional drawing

