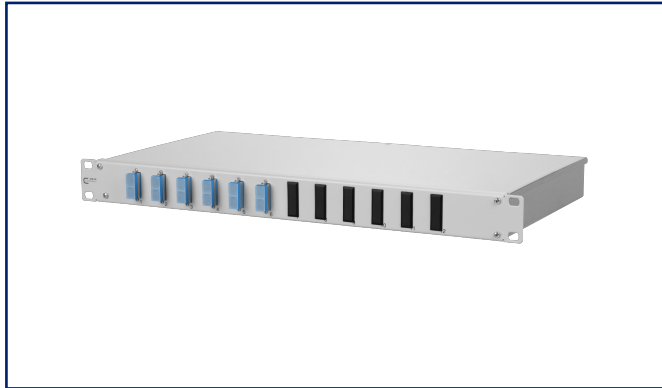


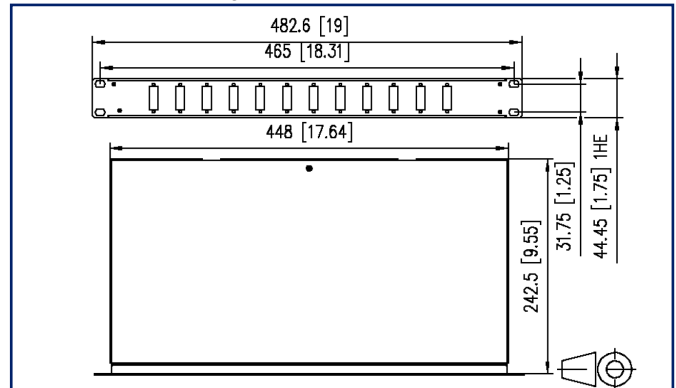
## Data sheet

### OpDAT fix patch panel splice 6xSC-D OS2

## Illustrations



Dimensional drawing



See enlarged drawings at the end of document

## Product specification

- 19 inch 1RU fiber optic patch panel for fixed installation
- equipped with SC-D adapters and SC pigtails
- pigtails with semi-tight buffered fiber dia. 0.9 mm, 12 colors, secondary and primary coating in the same color, length 2.0 m
- pigtails inserted and stripped in standard splice trays with crimp splice holders
- pigtails are cleaned and plugged in adapters
- light aluminum construction with steel sheet front plate painted (gray or black)
- unused cutouts are closed by blank plugs
- removable front plate for easy adapter mounting
- screwed on cover for easy access during service work
- several possibilities for cable entry on the back (fastening with PG13.5, PG16 and PG21 or M20 and M25)
- supplied with one M20 cable gland



# P | Cabling

Data sheet

Page 2/6

## OpDAT fix patch panel splice 6xSC-D OS2

P/N

150259E206-F

EAN 4250184171782

2023/08/01

Version: B

### Technical Data

#### General Data

|   |  |
|---|--|
| Fields of application                         | structured building cabling<br>office areas<br>data center |
| Mechanical measurement according to MICE      | M1   |
| Ingress measurement according to MICE         | I1   |
| Climatic measurement according to MICE        | C1   |
| Electromagnetic measurement according to MICE | E3   |
| Design  | patch panel  |
| Mounting style                                | 1RU  |
| Transmission technology                       | Fiber optic  |
| Port numbering                                | yes  |
| Color   | blue   |
| Dimensions                                    |  |
| Dimension (L x W x H)                         | 244.5 mm x 482.6 mm x 44.45 mm                             |
| Dimension (L x W x H)                         | 9.626 in. x 19 in. x 1.75 in.                              |
| Inches  | 19 inches  |
| Height unit                                   | 1RU  |
| Installation depth                            | 243 mm   |
| Installation depth                            | 9.567 in.  |
| Number of cables/ buffered fibers             | 12   |
| Cable Type                                    | pigtail(s)   |
| Fiber class                                   | OS2  |
| Mode type of the fiber                        | Singlemode   |
| Shape   | UPC (Ultra Physical Contact)                               |
| Fiber construction                            | 9/125 µm   |
| Labeling option                               | printed numbers  |

#### Connections/interfaces

|                                      |               |
|--------------------------------------|---------------|
| Connector technology interface 1     | SC-D Couplers |
| Connector technology interface 2     | SC-D Couplers |
| Number of ports interface 1          | 12            |
| Number of ports interface 2          | 12            |
| Number of equipped ports interface 1 | 6             |
| Number of ports interface 2 equipped | 6             |



# P | Cabling

Data sheet

Page 3/6

## OpDAT fix patch panel splice 6xSC-D OS2

P/N

150259E206-F

EAN 4250184171782

2023/08/01

Version: B

### Technical Data

#### Connections/interfaces

|  |   |
|--|---|
| Number of ports with dust protection interface 2 | 6   |
| Semi-tight buffered fiber pigtail length         | 2 m   |
| Semi-tight buffered fiber pigtail length         | 6.56 ft   |
| Semi-tight buffered fiber pigtail diameter       | 0.9 mm  |
| Semi-tight buffered fiber pigtail diameter       | 0.035 in.   |
| Cable access/outlet                              | several possibilities for cable entry on the back |

#### Optical characteristics

|                |             |
|----------------|-------------|
| Insertion loss | max. 0,3 dB |
| Return loss    | min. 50 dB  |

#### Mechanical data

|                                |                  |
|--------------------------------|------------------|
| Cut-out                        | SC-D, LC-Q, ST-D |
| Connector type                 | duplex           |
| Life - Number of mating cycles | min. 1000        |
| strain relief                  | yes              |

#### Materials and material properties

|                               |                  |
|-------------------------------|------------------|
| Material - Housing            | Al (Aluminium)   |
| Material - Front cover        | sheet steel      |
| Material - Front cover finish | powder-coated    |
| Material - Sleeve             | ceramic, slotted |
| Material - Coupler housing    | Plastics         |
| Halogen free                  | yes              |
| RoHS                          | compliant        |

#### Standards/Regulations

|  |                                   |
|--|-----------------------------------|
| FO connector interfaces  | IEC 61754-4                       |
| Optical fibers: Indoor optical cables  |                                   |
| Sectional specification for class B single-mode fibres   | ISO/IEC 60793-2-50 type B6_a/B6_b |
| Optical fibers - Interconnecting devices and passive components - basic test and measuring methods |                                   |
| Fibre optic interconnecting devices and passive components - Insertion loss                        | IEC 61300-3-4                     |
| Fibre optic interconnecting devices and passive components - Return loss                           | IEC 61300-3-6                     |

# P | Cabling

Data sheet

Page 4/6

## OpDAT fix patch panel splice 6xSC-D OS2

P/N

150259E206-F

EAN 4250184171782

2023/08/01

Version: B

### Technical Data

#### Standards/Regulations

Optical fibers - Interconnecting devices and passive components - basic test and measuring methods

|   |   |
|---|---|
| Fibre optic interconnecting devices and passive components - Visual inspection of plug end face | IEC 61300-3-35                              |
| Standard colours for insulation for low-frequency cables & wires                                | IEC 60304                                   |
| ITU-T standard  | ITU-T G.657.A compatible with ITU-T G.652.D |

#### Classifications

|          |          |
|----------|----------|
| ETIM 7.0 | EC001130 |
| ETIM 8.0 | EC001130 |
| ETIM 9.0 | EC001130 |

#### Packing details

|                   |               |
|-------------------|---------------|
| Type of packaging | 1 pc(s) / box |
|-------------------|---------------|



# P | Cabling

Data sheet

Page 5/6

## OpDAT fix patch panel splice 6xSC-D OS2

P/N

150259E206-F

EAN 4250184171782

2023/08/01

Version: B

### Accessories

| P/N          | Designation                                      |
|--------------|--|
| 130792       | Mounting kit, cage nuts M6                       |
| 1502500000-E | OpDAT PF/fix patch cord tray, gray               |
| 150811M20-E  | Cable gland M20 (Clamping range 7.0 to 12.0 mm)  |
| 150811M25-E  | Cable gland M25 (Clamping range 10.0 to 16.0 mm) |
| 15090401-E   | OpDAT crimp splice protection (12 pieces)        |



# P | Cabling

Data sheet

## OpDAT fix patch panel splice 6xSC-D OS2

Page 6/6

P/N

150259E206-F

EAN 4250184171782

2023/08/01

Version: B

### Illustrations

Dimensional drawing

