

Data sheet**OpDAT splice cassette holder for OpDAT MV**

Page 1/4

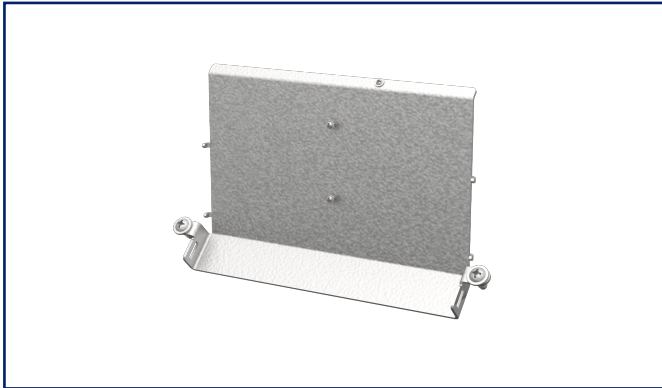
P/N

15036Z0200-E

EAN 4251394669625

2023/04/04

Version: A

Illustrations

See enlarged drawings at the end of document

Product specification

- modular accessories to OpDAT MV
- mounting plate for mounting 2 splice cassette blocks
- simple installation with 3 screws (included in delivery)



P | Cabling

Data sheet

Page 2/4

OpDAT splice cassette holder for OpDAT MV

P/N

15036Z0200-E

EAN 4251394669625

2023/04/04

Version: A

Technical Data

General Data

Color	metallike
-------	-----------

Materials and material properties

Material	sheet steel
----------	-------------

RoHS	compliant
------	-----------

Classifications

ETIM 7.0	EC002066
----------	----------

ETIM 8.0	EC002066
----------	----------

Packing details

Type of packaging	1 pc(s) / box
-------------------	---------------



P | Cabling

Data sheet

Page 3/4

OpDAT splice cassette holder for OpDAT MV

P/N

15036Z0200-E

EAN 4251394669625

2023/04/04

Version: A

Accessories

P/N	Designation
15036Z0201-E	OpDAT splice cassette block for 6x12 crimp splice holder
15036Z0202-E	OpDAT splice cassette block for 3x12 shrink splice holder

© 2023 METZ CONNECT - Technische Änderungen vorbehalten! Subject to modifications! Sous réserve de modifications techniques!



OpDAT splice cassette holder for OpDAT MV

P/N

15036Z0200-E

EAN 4251394669625

2023/04/04

Version: A

Accessories from

P/N	Designation
15036000000-B	OpDAT MV unequipped IP65
15036000000-E	OpDAT MV unequipped IP54
15036001A18-B	OpDAT MV 18xSC-S APC VIK IP65
15036001A18-E	OpDAT MV 18xSC-S APC VIK IP54
15036001D18-B	OpDAT MV 18xSC-S OM4 VIK IP65
15036001D18-E	OpDAT MV 18xSC-S OM4 VIK IP54
15036005F09-B	OpDAT MV 9xE2000-D APC VIK IP65
15036005F09-E	OpDAT MV 9xE2000-D APC VIK IP54
15036007509-B	OpDAT MV 9xLC-D OM4 VIK IP65
15036007509-E	OpDAT MV 9xLC-D OM4 VIK IP54
15036007609-B	OpDAT MV 9xLC-D APC VIK IP65
15036007609-E	OpDAT MV 9xLC-D OM4 VIK IP54
1503600RJ00-B	OpDAT MV hybrid 12xmodule cutouts unequipped IP65
1503600RJ00-E	OpDAT MV hybrid 12xmodule cutouts unequipped IP54
15036C71D18-B	OpDAT MV 18xSC-S OM4 splice IP65
15036C71D18-E	OpDAT MV 18xSC-S OM4 splice IP54
15036C77509-B	OpDAT MV 9xLC-D OM4 splice IP65
15036C77509-E	OpDAT MV 9xLC-D OM4 splice IP54
15036C91A18-B	OpDAT MV 18xSC-S APC OS2 splice IP65
15036C91A18-E	OpDAT MV 18xSC-S APC OS2 splice IP54
15036C95F09-B	OpDAT MV 9xE2000-D APC OS2 splice IP65
15036C95F09-E	OpDAT MV 9xE2000-D APC OS2 splice IP54
15036C97609-B	OpDAT MV 9xLC-D APC OS2 splice IP65
15036C97609-E	OpDAT MV 9xLC-D APC OS2 splice IP54