

**Data sheet****Dust protection cover for C6<sub>A</sub> modul light gray**

Page 1/5

P/N

820032-0103-I

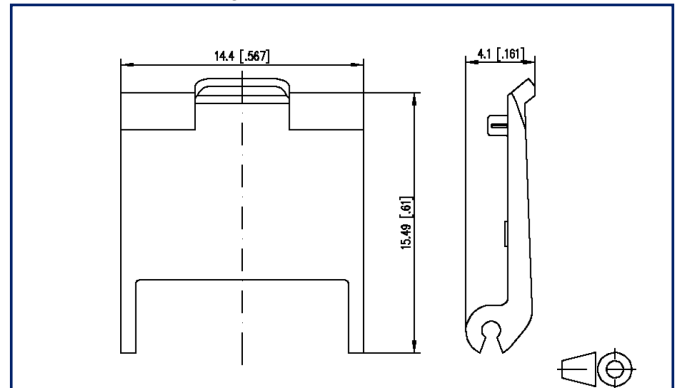
EAN 4250184149842

2023/06/19

Version: N

**Illustrations**

Dimensional drawing



See enlarged drawings at the end of document

**Product specification**

- optional dust cover for individual modules suitable for: C6<sub>A</sub> modul, E-DAT modul, each in MC Modul- or Keystone design, UTP modul in Keystone design and UAE modul in MC Modul-design
- suitable for modules mounted in applications without separate dust protection devices



# P | Cabling

Data sheet

Page 2/5

## Dust protection cover for C6<sub>A</sub>modul light gray

P/N

820032-0103-I

EAN 4250184149842

2023/06/19

Version: N

### Technical Data

#### General Data

Mechanical measurement according to MICE	M1
Ingress measurement according to MICE	I1
Climatic measurement according to MICE	C1
Electromagnetic measurement according to MICE	E3
Design	Dust protection
Mounting style	Accessories
Color	light gray
Dimensions	
Dimension (L x W x H)	15.49 mm x 14.4 mm x 4.06 mm
Dimension (L x W x H)	0.61 in. x 0.567 in. x 0.16 in.

#### Materials and material properties

Material	ABS
Halogen free	yes
RoHS	compliant

#### Classifications

ETIM 5.0	EC000723
ETIM 6.0	EC000723
ETIM 7.0	EC000723
ETIM 8.0	EC000723
ETIM 9.0	EC000723

#### Packing details

Type of packaging	10 pc(s) / box
Packaging unit - Weight (gram)	22 g
Packaging unit - Weight (pound)	0.05 lb
Packaging dimension	82 mm x 32 mm x 67 mm
Packaging dimension	3.228 in. x 1.26 in. x 2.638 in.

## Dust protection cover for C6<sub>A</sub>modul light gray

P/N

820032-0103-I

EAN 4250184149842

2023/06/19

Version: N

### Accessories from

P/N	Designation
130910-I	E-DAT modul Cat.6 <sub>A</sub> 8(8) jack
130910-I-B1	E-DAT modul Cat.6 <sub>A</sub> 8(8) jack, T568B
130910KI	E-DAT modul Cat.6 <sub>A</sub> K jack - Keystone style
130910KI-79	E-DAT modul Cat.6 <sub>A</sub> K jack - Keystone style
130910-Z	E-DAT modul Cat.6 <sub>A</sub> 8(8) jack, (12 pcs)
130921-00-E	Modul 19 inch module frame 1RU 24 port stainless steel unequipped
130921-E	E-DAT modul 24x8(8) 1RU patch panel Cat.6 <sub>A</sub> , stainless steel
130924-00-E	Modul 19 inch module frame 1.5RU 48 port stainless steel unequipped
130924-E	E-DAT modul 48x8(8) 1.5RU patch panel Cat.6 <sub>A</sub> , stainless steel
130925-GRKE	Keystone 19 inch module frame 0.5RU 24 port gray unequipped
130926-0003KE	Keystone 19 inch module frame 1RU 24 port grey unequipped, shielded
130926-0029KE	Keystone 19 inch module frame 1RU 24 port black unequipped, shielded
130926A0003KE	Keystone 19 inch module frame 1RU 24 port angeled grey unequipped, shielded
130926A0029KE	Keystone 19 inch module frame 1RU 24 port angeled black unequipped, shielded
130926AA029KE	Keystone 19 inch module frame 1RU 24 ports 133° angled, black, unequipped, shielded
130A11-29-I	UAE modul 8(8) Cat.6 <sub>A</sub> black
130A11-29KI	UTP modul 8(8) Cat.6 <sub>A</sub> Keystone black
130A11KI	UTP modul 8(8) Cat.6 <sub>A</sub> Keystone white
130A21-00-E	Keystone 19 inch module frame 1RU 24 port stainless steel unequipped
130A24-00-E	Keystone 19 inch module frame 1.5RU 48 port stainless steel unequipped
130B11-E	C6 <sub>A</sub> modul 180° jack
130B11P1-E	C6 <sub>A</sub> modul 24 port 180°M 1RU stainless steel
130B11P2-E	C6 <sub>A</sub> modul 6 port 180°M for 1RU
130B11P4-E	C6 <sub>A</sub> modul 48 port 180°M 1.5RU stainless steel
130B12-E	C6 <sub>A</sub> modul 270° jack
130B13-E	C6 <sub>A</sub> modul 90° jack
130B21-E	C6 <sub>A</sub> modul K 180° jack - keystone style

# P | Cabling

Data sheet

Page 4/5

## Dust protection cover for C6<sub>A</sub>modul light gray

P/N

820032-0103-I

EAN 4250184149842

2023/06/19

Version: N

### Accessories from

130B21-E-85	C6 <sub>A</sub> modul K 180° jack - Keystone style
130B22-E	C6 <sub>A</sub> modul K 270° jack - keystone style
130B23-E	C6 <sub>A</sub> modul K 90° jack - keystone style

# P | Cabling

Data sheet

## Dust protection cover for C6<sub>A</sub> modul light gray

Page 5/5

P/N

820032-0103-I

EAN 4250184149842

2023/06/19

Version: N

### Illustrations

Dimensional drawing

