

## Data sheet

### OpDAT fix patch panel VIK 24xSC-D APC OS2

Page 1/5

P/N

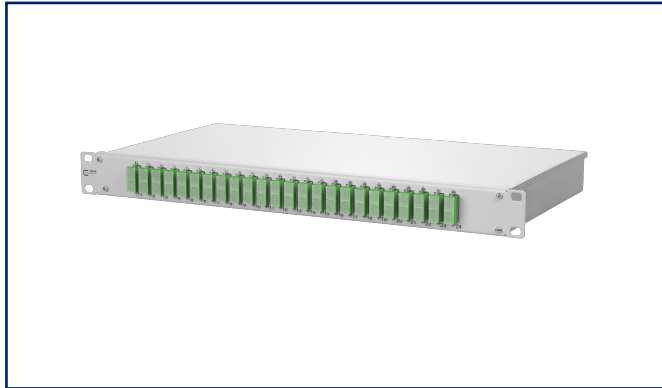
150250F224-E

EAN 4251394625935

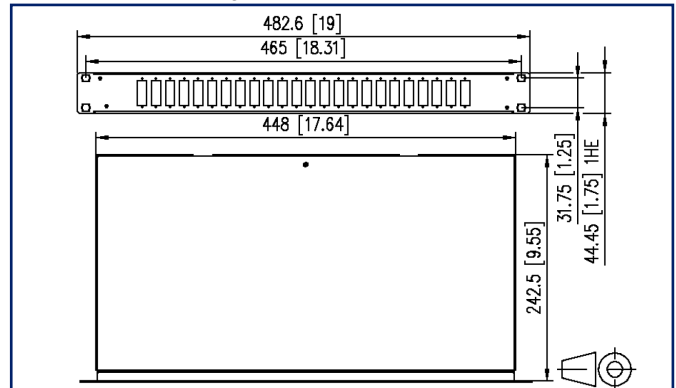
2023/08/01

Version: I

## Illustrations



Dimensional drawing



See enlarged drawings at the end of document

## Product specification

- 19 inch 1RU fiber optic patch panel for fixed installation
- equipped with SC-D adapters
- prepared for fixation of pre-terminated installation cables (OpDAT VIK)
- light aluminium construction with steel sheet front plate painted (gray or black)
- unoccupied recesses are closed with blind plugs
- removable front plate for easy adapter mounting
- screwed on cover for easy access during service work
- several possibilities for cable entry on the back (fastening with PG13.5, PG16 and PG21 or M20 and M25)
- toolless fastening of pre-assembled installation cables (OpDAT VIK) in a U-shaped cutout
- variants: equipped with 6, 12 or 24 SC-D adapters, all blue (OS2), lime green (OM5), violet (OM4), aqua (OM3) or 6, 12 or 24 SC-D APC adapters, all green (OS2)



# P | Cabling

Data sheet

Page 2/5

## OpDAT fix patch panel VIK 24xSC-D APC OS2

P/N

150250F224-E

EAN 4251394625935

2023/08/01

Version: I

### Technical Data

#### General Data

Fields of application	structured building cabling office areas data center
Mechanical measurement according to MICE	M1
Ingress measurement according to MICE	I1
Climatic measurement according to MICE	C1
Electromagnetic measurement according to MICE	E3
Design	patch panel
Mounting style	1RU
Transmission technology	Fiber optic
Port numbering	yes
Color	green
Dimensions	
Dimension (L x W x H)	242.5 mm x 482.6 mm x 44.45 mm
Dimension (L x W x H)	9.547 in. x 19 in. x 1.75 in.
Inches	19 inches
Height unit	1RU
Installation depth	243 mm
Installation depth	9.567 in.
Fiber class	OS2
Mode type of the fiber	Singlemode
Shape	APC (Angled Physical Contact)
Fiber construction	9/125 µm
Labeling option	printed numbers

#### Connections/interfaces

Connector technology interface 1	SC-D Couplers
Connector technology interface 2	SC-D Couplers
Number of ports interface 1	24
Number of ports interface 2	24
Number of equipped ports interface 1	24
Number of ports interface 2 equipped	24
Number of ports with dust protection interface 1	24
Number of ports with dust protection interface 2	24



# P | Cabling

Data sheet

Page 3/5

## OpDAT fix patch panel VIK 24xSC-D APC OS2

P/N

150250F224-E

EAN 4251394625935

2023/08/01

Version: I

### Technical Data

#### Connections/interfaces

Cable access/outlet several possibilities for cable entry on the back

#### Mechanical data

Cut-out SC-D, LC-Q, ST-D

Connector type duplex

Life - Number of mating cycles min. 1000

strain relief yes

#### Materials and material properties

Material - Housing Al (Aluminium)

Material - Front cover sheet steel

Material - Sleeve ceramic, slotted

Material - Coupler housing Plastics

Halogen free yes

RoHS compliant

#### Classifications

ETIM 5.0 EC001130

ETIM 6.0 EC001130

ETIM 7.0 EC001130

ETIM 8.0 EC001130

ETIM 9.0 EC001130

#### Packing details

Type of packaging 1 pc(s) / box

Packaging dimension 540 mm x 380 mm x 60 mm

Packaging dimension 21.26 in. x 14.961 in. x 2.362 in.



# P | Cabling

Data sheet

## OpDAT fix patch panel VIK 24xSC-D APC OS2

Page 4/5

P/N

150250F224-E

EAN 4251394625935

2023/08/01

Version: I

### Accessories

P/N	Designation
130792	Mounting kit, cage nuts M6
1502500000-E	OpDAT PF/fix patch cord tray, gray
15081106-E	OpDAT mounting plate VIK
150811M20-E	Cable gland M20 (Clamping range 7.0 to 12.0 mm)
150811M25-E	Cable gland M25 (Clamping range 10.0 to 16.0 mm)



# P | Cabling

Data sheet

**OpDAT fix patch panel VIK**  
**24xSC-D APC OS2**

Page 5/5

P/N  
**150250F224-E**

EAN **4251394625935**

2023/08/01

Version: I

## Illustrations

Dimensional drawing

