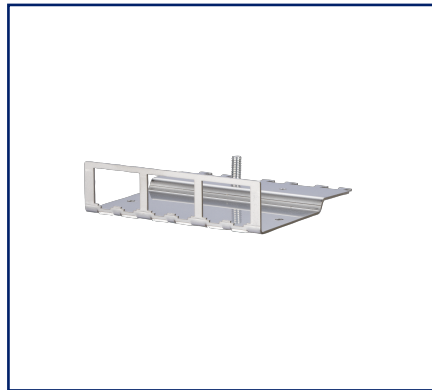


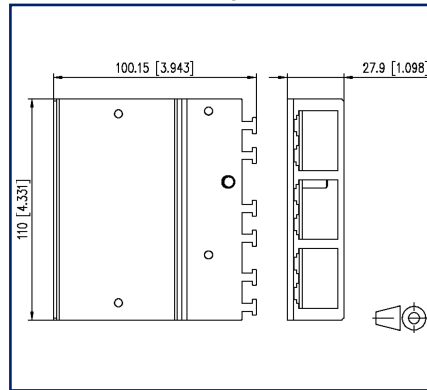
Data sheet

6 port module frame 1RU

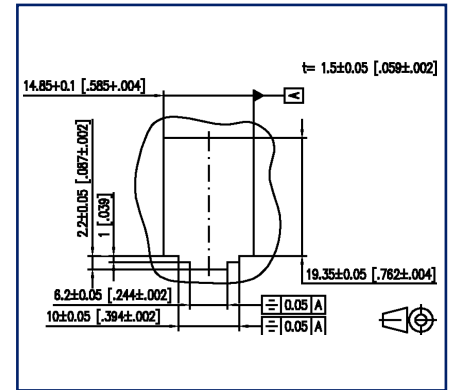
Illustrations



Dimensional drawing



Drill pattern



See enlarged drawings at the end of document

Product specification

- module frame for 6 individual modules in Modul design
- 1RU module frame for mounting in surface-mounted housing, top hat rail adapter or 1RU module frame
- optional strain relief using cable ties
- grounding bolt M6 x 10 with nut and lock washer

P | Cabling

Data sheet

Page 2/7

6 port module frame 1RU

P/N

130922-00-E

EAN 4250184106173

2023/04/14

Version: L

Technical Data

General Data

Fields of application	office areas
Mechanical measurement according to MICE	M1
Ingress measurement according to MICE	I1
Climatic measurement according to MICE	C1
Electromagnetic measurement according to MICE	E3
Design	patch panel
Color	stainless steel
Dimensions	
Dimension (L x W x H)	100.15 mm x 110 mm x 27.9 mm
Dimension (L x W x H)	3.943 in. x 4.331 in. x 1.098 in.
Height unit	1RU
Modularity	yes

Connections/interfaces

Number of ports interface 1	6
Number of equipped ports interface 1	0
Number of ports interface 2	6
Number of ports interface 2 equipped	0
Ground connection	grounding bolt M6x10 with nut and lock washer

Mechanical data

Cut-out	module
---------	--------

Materials and material properties

Material - Finish	Ni (nickel)
Material - Module support	stainless steel
Halogen free	yes
RoHS	compliant

Environmental conditions

Temperature (min. - max.)	
Temperature - Storage °C	-40 °C - 70 °C
Temperature - Storage °F	-40 °F - 158 °F
Temperature - Operating °C	-40 °C - 70 °C

P | Cabling

Data sheet 6 port module frame 1RU

Page 3/7

P/N
130922-00-E
EAN 4250184106173
2023/04/14
Version: L

Technical Data

Environmental conditions

Temperature (min. - max.)

Temperature - Operating °F -40 °F - 158 °F

Approvals

UL listed (file no.)



DUXR.E178484

Classifications

ETIM 5.0	EC001128
ETIM 6.0	EC001128
ETIM 7.0	EC002608
ETIM 8.0	EC002608
ETIM 9.0	EC002608

Packing details

Type of packaging	1 pc(s) / box
Packaging unit - Weight (gram)	2299 g
Packaging unit - Weight (pound)	5.07 lb
Packaging dimension	139 mm x 115 mm x 37 mm
Packaging dimension	5.472 in. x 4.528 in. x 1.457 in.

Accessories

P/N	Designation
130898-00-I	BLIND module light gray
130898-00-RW-I	BLIND module pure white
130898-01-I	COAX modul F jack / F jack
130898-02-I	COAX modul IEC jack / F jack
130898-03-I	COAX modul IEC plug / F jack
130908-I-B1	UAE modul Cat.5e white
130909-I	UAE modul Cat.6 jack T568A white
130910-I	E-DAT modul Cat.6 _A 8(8) jack, T568A
130910-I-B1	E-DAT modul Cat.6 _A 8(8) jack, T568B
130910-Z	E-DAT modul Cat.6 _A 8(8) jack, T568A (12 pcs)
1309A0-I	E-DAT modul coupler 8(8) 180° class E _A
130A11-29-I	UAE modul 8(8) Cat.6 _A black
130A11-I	UAE modul 8(8) Cat.6 _A white
130B11-25-E	25Gmodul
130B11-25-Z	25Gmodul (12 pcs)
130B11-E	C6 _A modul 180° jack
130B11-Z	C6 _A modul 180° jack (12 pcs)
15091001-I	OpDAT modul ST OS2
15091071-I	OpDAT modul LC-Duplex OS2
15091072-I	OpDAT modul LC-Duplex OM3
15091075-I	OpDAT modul LC-Duplex OM4
15091076-I	OpDAT modul LC-Duplex APC OS2
1509107B-I	OpDAT modul LC-Duplex OM2

P | Cabling

Data sheet

6 port module frame 1RU

Page 5/7

P/N

130922-00-E

EAN 4250184106173

2023/04/14

Version: L

Accessories from

P/N	Designation
1308990110-E	DIN rail adapter
130B10E2-E	Module frame 3RU, 7HP 6 port, aluminum, unequipped
854544-E	Module frame 1RU 19 inch, unequipped
854568-E	Module frame 10 inch 1RU



P | Cabling

Data sheet

6 port module frame 1RU

Page 6/7

P/N

130922-00-E

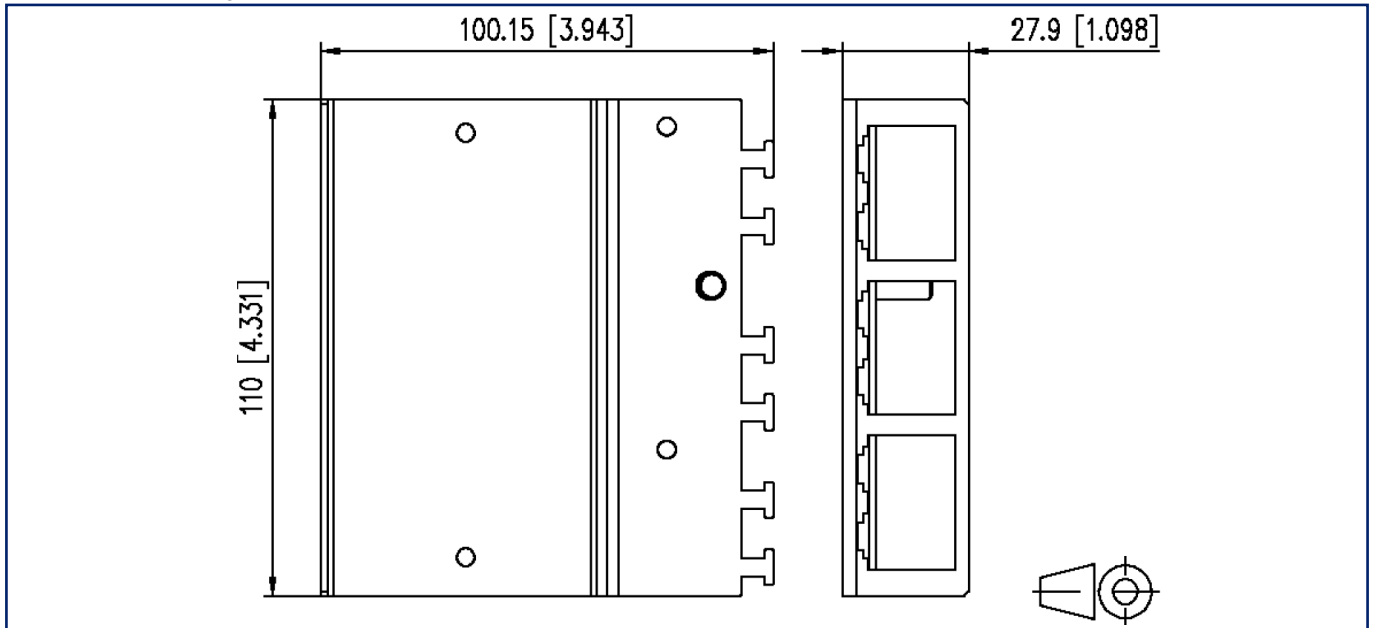
EAN 4250184106173

2023/04/14

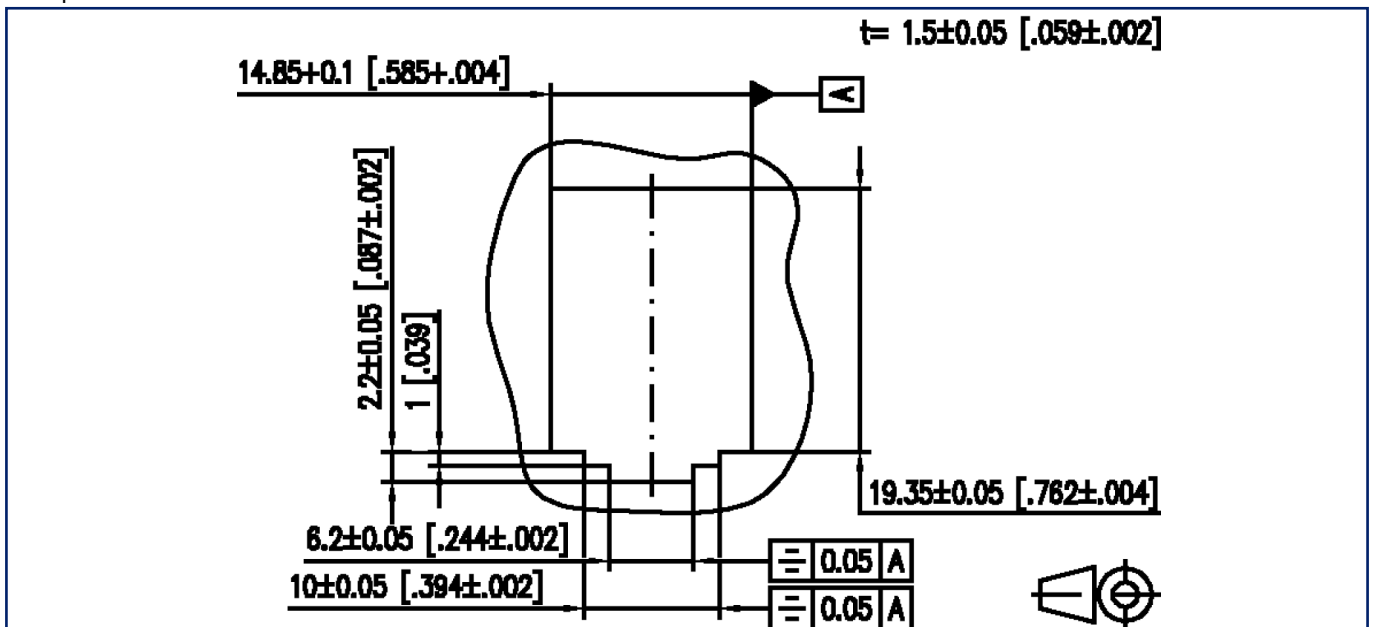
Version: L

Illustrations

Dimensional drawing



Drill pattern



P | Cabling

Data sheet

6 port module frame 1RU

Page 7/7

P/N

130922-00-E

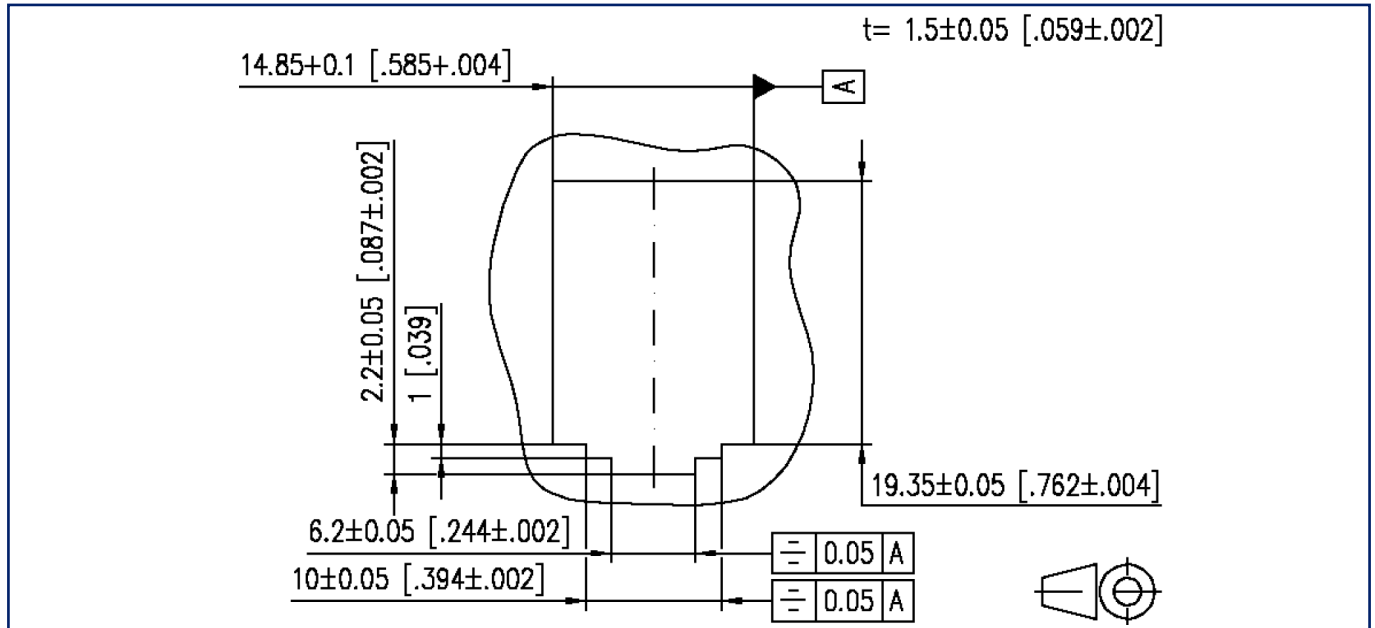
EAN 4250184106173

2023/04/14

Version: L

Illustrations

Cut-out



© 2023 METZ CONNECT - Technische Änderungen vorbehalten! Subject to modifications! Sous réserve de modifications techniques!

