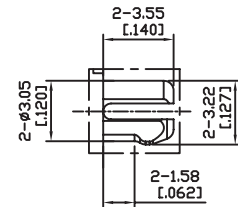
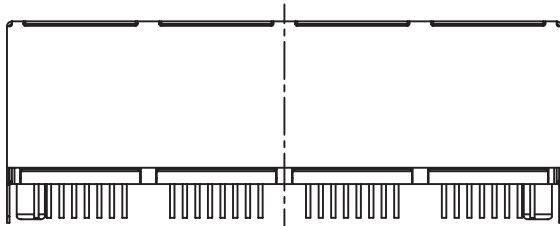


Electrical Characteristics :

- Insulation Resistance : 500MΩ Min.
- Contact Resistance : 50mΩ Max.
- Withstand Voltage : 1000 VAC 1 minute.
- Current Rating : 1.5A

Material:

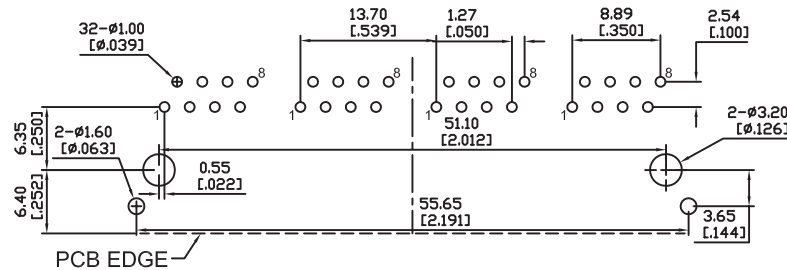
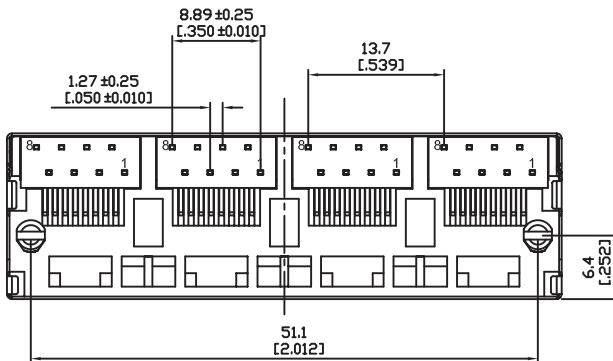
- Housing: Thermoplastic UL 94V-0
- Contact : Selective Gold Plating
- Terminal: 0.35mm Thickness Copper Alloy
Plated With Gold And Tin In Solder Area.
- Shell: Copper Alloy, Nickel Plating.



DET.A
SCALE 2:1

Ordering Information

AJT52D	8	8	4	X
Type	Positions	Contacts	Ports	Plating
				1 = 6u"
				3 = 30u"



RECOMMENDED PCB LAYOUT
TOP VIEW
PCB THICKNESS: 1.60±0.05mm
TOLERANCE: ±0.05mm

Tolerance unless otherwise specified
mm
.0 ± .25
.00 ± .15
.000 ± .075

	P/N: AJT52D884x
	Desc.: Top entry, shielded, thru hole modular jack
Date: 9-3-20	
Dimensions in mm	