

Data sheet**MC GC400 SL23 Cat.6 U/UTP LSHF 1640 ft, class E_{ca}**

Page 1/6

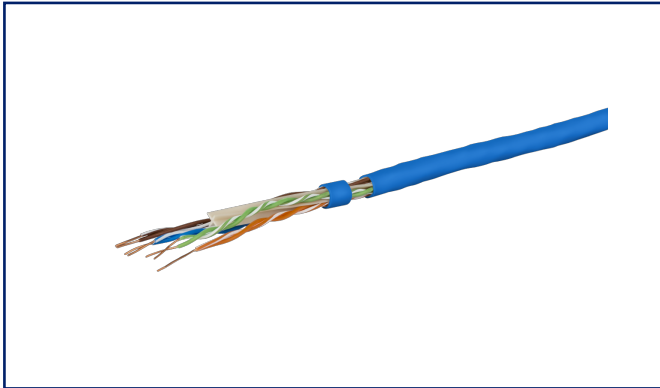
P/N

1308406032141

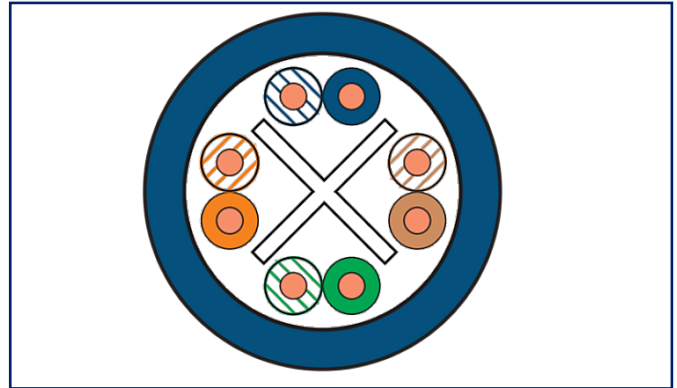
EAN 4250184175223

2023/04/26

Version: AV

Illustrations

Principle diagram



See enlarged drawings at the end of document

Product specification

- 1 GBit installation cable, simplex
- unshielded installation cable Cat.6 class E, AWG 23 U/UTP
- 4 pairs with separator (spline)
- outer diameter: 5.3 mm
- color of the cable jacket: blue
- coupling attenuation greater than or equal to 40 dB
- applicable standards: EN 50173-1, ISO/IEC 11801, EN 50288-6-1, IEC 61156-5, ANSI/TIA-568.2-D
- cable jacket: LSHF (LSOH)
- flame-retardant to IEC 60332-1, IEC 60754-2 and IEC 61034
- fire behaviour: Class E_{ca} (classification acc. to EN 13501-6)
- delivery unit: on drum - 500 m/1640 ft



P | Cabling

Data sheet

Page 2/6

MC GC400 SL23 Cat.6 U/UTP LSHF 1640 ft, class E_{ca}

P/N

1308406032141

EAN 4250184175223

2023/04/26

Version: AV

Technical Data

General Data

Design	installation cable
Shielding	unshielded
Transmission technology	Copper
Cable Type	U/UTP
Number of twisting elements	4
Twisting element	Pair
Color coding fiber/ wire(s)	white/orange, orange, white/green, green, white/brown, brown, white/blue, blue
Color	blue
Cable length (m)	500 m
Cable length (ft)	1640.42 ft
Weight	36 kg/km

Transmission characteristics

Category (ISO)	6
Class (ISO/IEC)	E
Transmission rate up to 1 GBit (Fast Ethernet)	IEEE 802.3ab
Transmission values (nominal)	see table

Connections/interfaces

Termination data, solid wire (min. - max.)	
Conductor cross section, solid wire	AWG 23/1
Conductor diameter, solid wire (bare copper)	0.54 mm - 0.54 mm
Conductor diameter, solid wire (bare copper)	0.021 in. - 0.021 in.
Core diameter (min. - max.)	
Core diameter (conductor with insulation)	0.95 mm
Core diameter (conductor with insulation)	0.037 in.
Cable sheath diameter (min. - max.)	
Cable sheath diameter	5.3
Cable sheath diameter	0.209
Copper index	18.1 kg/km



P | Cabling

Data sheet

Page 3/6

MC GC400 SL23 Cat.6 U/UTP LSHF 1640 ft, class E_{ca}

P/N

1308406032141

EAN 4250184175223

2023/04/26

Version: AV

Technical Data

Electrical characteristics

Loop resistance	max. 176 Ohm/km
Characteristic impedance 1-100 MHz	100+/-5
Resistance unbalance	max. 2 %
Coupling attenuation	min. 40 dB
Capacitance at 800 Hz	48
Capacitance unbalance pair to ground	max. 1500 pF/km
Nominal velocity of propagation	67 %
Signal propagation delay	max. 535 ns/100 m
Delay skew	max. 20 ns/100 m
Dielectric strength conductor-conductor (primarily)	1000 V DC
Dielectric strength conductor-conductor (secondary)	1000 V DC
Dielectric strength conductor-shield	1000 V DC

Mechanical data

Tensile force	100 N
Fire load	0.087 kWh/m
Fire load	316 MJ/km
Bending radius without load	min. 21.2 mm
Bending radius without load	min. 0.83 in.
Bending radius with load	min. 42.4 mm
Bending radius with load	min. 1.67 in.

Materials and material properties

Material - Conductor	Cu (copper)
Material - Conductor Insulation	Foam-Skin Polyethylen
Material - Cable jacket	LSHF (LSOH)
Halogen free	yes
RoHS	compliant

P | Cabling

Data sheet

Page 4/6

MC GC400 SL23 Cat.6 U/UTP LSHF 1640 ft, class E_{ca}

P/N

1308406032141

EAN 4250184175223

2023/04/26

Version: AV

Technical Data

Environmental conditions

Temperature (min. - max.)

Temperature - Storage °C	-20 °C - 60 °C
Temperature - Storage °F	-4 °F - 140 °F
Temperature - Operating °C	-20 °C - 60 °C
Temperature - Operating °F	-4 °F - 140 °F
Temperature - Installation °C	0 °C - 50 °C
Temperature - Installation °F	32 °F - 122 °F

Standards/Regulations

Generic cabling systems

General requirements ISO/IEC 11801 Ed.2.2:2011-06 | DIN EN 50173-1:2011-09
ANSI/TIA-568-C.2

Multi-element metallic cables used in analogue and digital communication and control

DIN EN 50288-6-1

Common test methods for cables under fire conditions

Fire behaviour - class (EN 50399)



fire behaviour: Class E_{ca} (classification acc. to EN 13501-6)

Test for vertical flame propagation for a single insulated wire or cable

IEC 60332-1

Measurement of smoke density of cables burning

IEC 61034

Determination of acidity (by measuring the pH value) and conductivity

IEC 60754-2

Classifications

ETIM 5.0	EC000830
ETIM 6.0	EC000830
ETIM 7.0	EC003249
ETIM 8.0	EC003249
ETIM 9.0	EC003249

Packing details

Type of packaging	1 meter / drum
Packaging dimension	850 mm x 700 mm x 850 mm
Packaging dimension	33.465 in. x 27.559 in. x 33.465 in.

P | Cabling

Data sheet

Page 5/6

MC GC400 SL23 Cat.6 U/UTP LSHF 1640 ft, class E_{ca}

P/N

1308406032141

EAN 4250184175223

2023/04/26

Version: AV

Accessories

P/N	Designation
140302-01-E	Jokari dismantle tool



P | Cabling

Data sheet

MC GC400 SL23 Cat.6 U/UTP LSHF 1640 ft, class E_{ca}

Page 6/6

P/N

1308406032141

EAN 4250184175223

2023/04/26

Version: AV

Illustrations

Principle diagram

