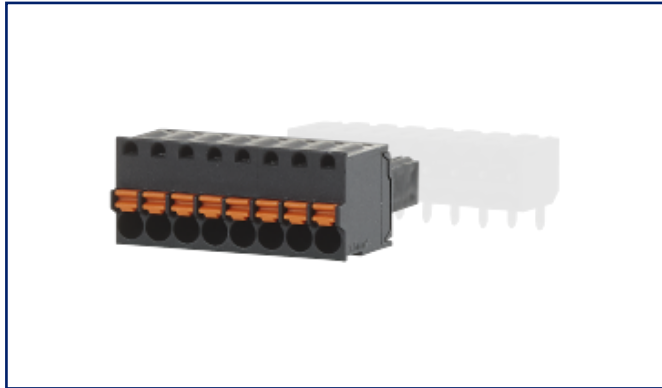
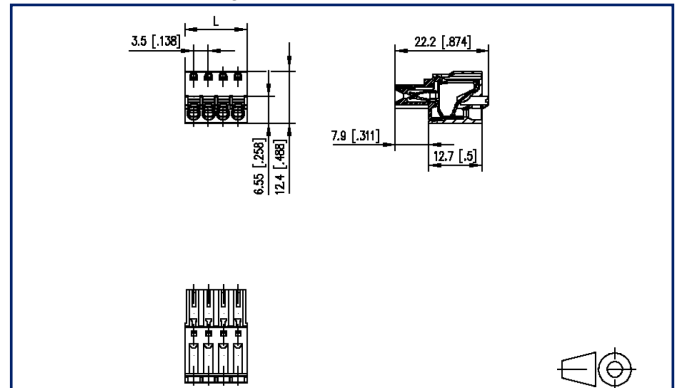


Illustrations



Dimensional drawing



See enlarged drawings at the end of document

Product specification

- spring clamp terminal block, pluggable
- centerline 3.50 mm, direction of connection vertical 0°
- color black
- push-button, wire entry uncodeable side parallel to plug direction



Technical Data



General Data

min. number of poles	2		
max. number of poles	24		
Insulating material class	CTI 600		
clearance/creepage dist.	1.9 mm		
Protection category	IP20		
Min. insul. strip length	9 mm		
Rated current	8 A		
Overvoltage category	III	III	II
Pollution degree	3	2	2
Rated voltage	50 V	250 V	250 V
Rated test voltage	2.5 kV	2.5 kV	2.5 kV

Terminal data

rat.wiring solid AWGmax	0.08 mm ² - 1.5 mm ² / AWG 28 - AWG 16		
rat.wiring strand.AWGmax	0.08 mm ² - 1.5 mm ² / AWG 28 - AWG 16		

Approvals

 V / A / AWG	150 / 8 / 28 - 16		
approval UL - File No.	E121004		
 * 1.5 mm ²	130 V / 2.5 kV / 8 A		

Material

insulating material	PA66
flammability class	V0
spring material	Spring steel
contact material	CuSn
Contact surface	Sn
Glow-Wire Flammability GWFI	960 °C acc. to IEC 60695-2-12
Glow-Wire Flammability GWIT	775 °C acc. to IEC 60695-2-13

Climatic Data

upper limit temperature	105 °C
lower limit temperature	-40 °C

general

U | Contact

Data sheet
SW063xxVBNN

Page 3/6

P/N
SW063XXVBNN
xx=number of poles
2023/07/03
Version: N

Technical Data

Tolerance

ISO 2768 -mH



U | Contact

Data sheet
SW063xxVBNN

Page 4/6

P/N
SW063XXVBNN
xx=number of poles
2023/07/03
Version: N

Accessories

P/N	Designation
700268-01-0	F_Kodier sw
700268-0132	F_Kodier sw
700268-0194	F_Kodier sw

© 2023 METZ CONNECT - Technische Änderungen vorbehalten! Subject to modifications! Sous réserve de modifications techniques!



U | Contact

Data sheet
SW063xxVBNN

Page 5/6

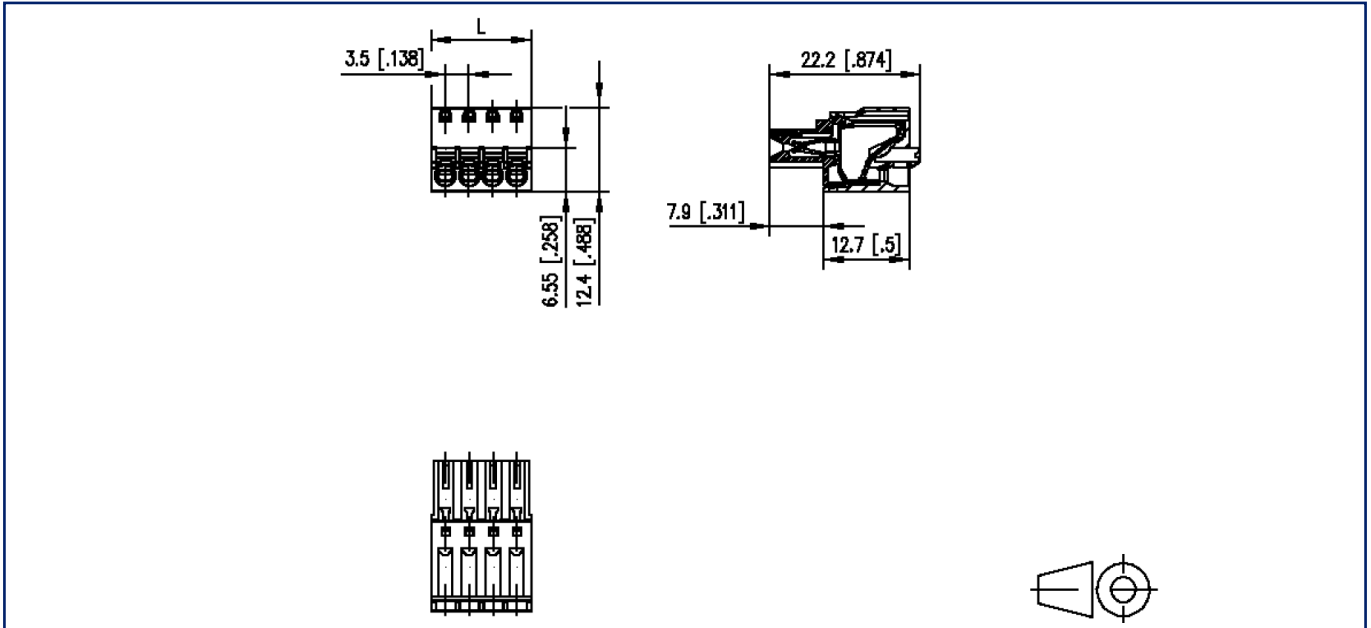
P/N
SW063XXVBNN
xx=number of poles
2023/07/03
Version: N

Counterpart

P/N	Designation
315231	PW063xxHBBN Type 523
315241	PW063xxVBBN Type 524
315271	PW063xxHBEC Type 527
315281	PW063xxVBEC Type 528

Illustrations

Dimensional drawing



$L = (\text{pole size} - 1) \times \text{centerline} + 4.3 \text{ mm} [0.169]$