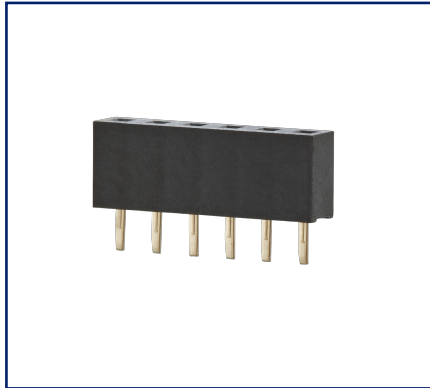
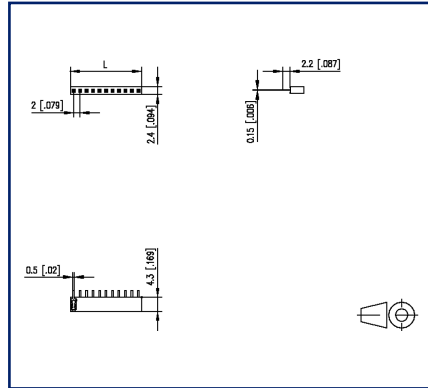


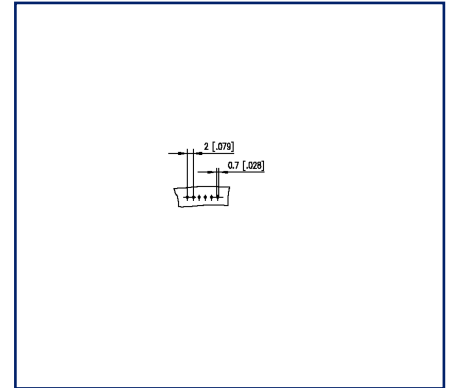
## Illustrations



Dimensional drawing



Drill pattern



See enlarged drawings at the end of document

## Product specification

- female connector, THR solderable
- centerline 2.00 mm, direction of connection vertical 0°
- closed ends
- color black
- Tape & Reel packaging possible
- single row

## Technical Data

### General Data

Solder pin length	2.2 mm
min. number of poles	2
max. number of poles	40
clearance/creepage dist.	0.65 mm
Protection category	IP00
Rated current	1 A

### Material

insulating material	PE-HT
contact material	CuSn
Contact surface	Ni + Au
contact pin material	CuSn
contact pin surface	Ni + Au Flash
Glow-Wire Flammability GWFI	-
Glow-Wire Flammability GWIT	-

### Climatic Data

upper limit temperature	105 °C
lower limit temperature	-40 °C

### general

Tolerance	ISO 2768 -mH
Solderability	reflowable



# U | Contact

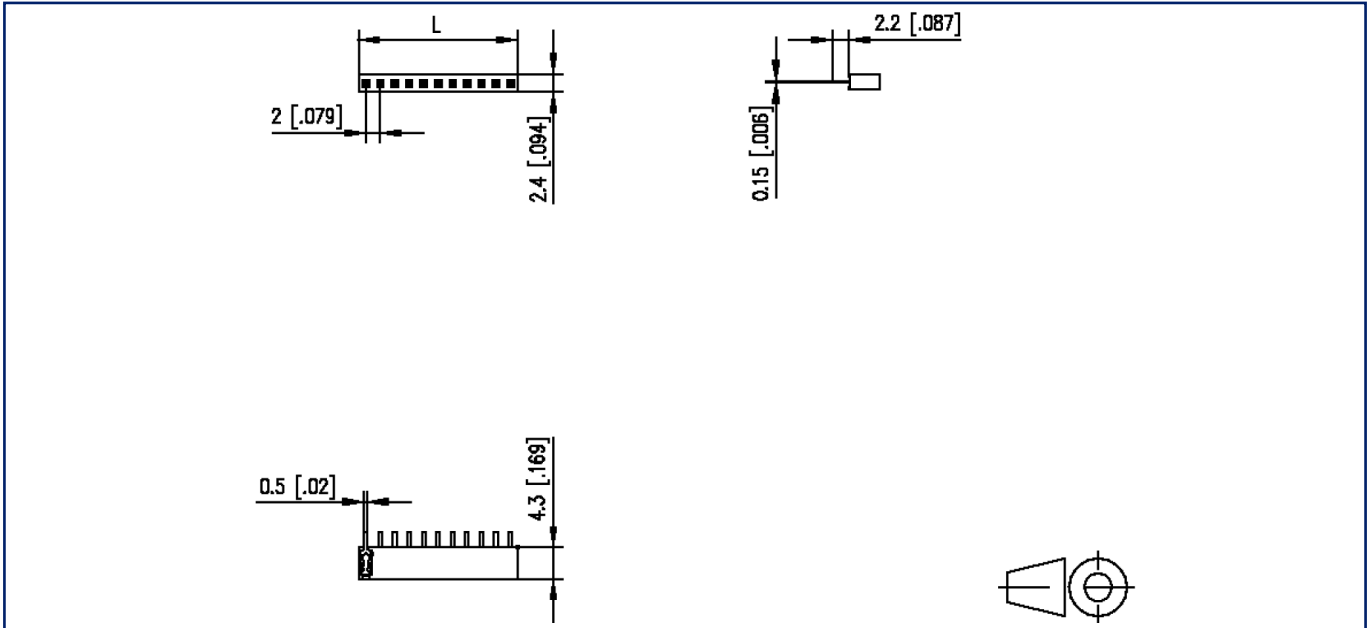
Data sheet  
FR20CxxVBNN

Page 3/4

P/N  
FR20CXXVBNN  
xx=number of poles  
2023/07/03  
Version: S

## Illustrations

Dimensional drawing



$L = (\text{pole size} - 1) \times \text{centerline} + 2 \text{ mm } [0.079]$



## Illustrations

### Drill pattern

