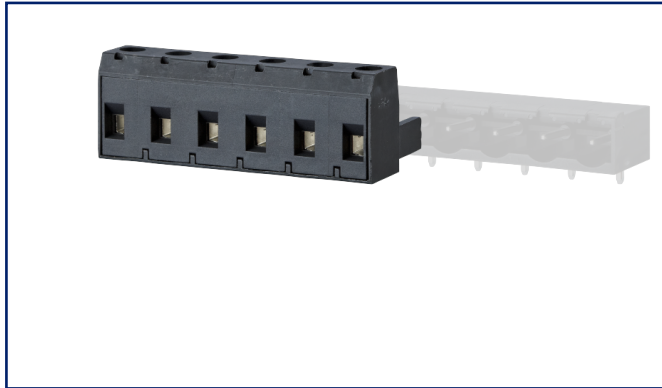


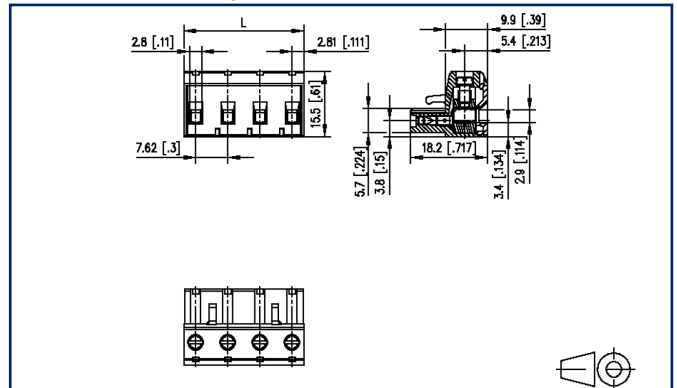
Data sheet

RP018xxVBLC Type 262

Illustrations



Dimensional drawing




See enlarged drawings at the end of document

Product specification

- screw type terminal block, pluggable
- centerline 7.62 mm, direction of connection vertical 0°
- lift system, fittable without loss of poles
- color black
- wire entry codeable side perpendicular to plug direction



Technical Data

| General Data | | | |
|---------------------------------------------------------------------------------------------------------|----------------------------------------------------------------------------------------------------|--------|--------|
| Tightening torque SEV | 0.5 Nm | | |
| Tightening torque UL | 4.4 lb-in | | |
| min. number of poles | 2 | | |
| max. number of poles | 12 | | |
| Insulating material class | CTI 600 | | |
| clearance/creepage dist. | 6.1 mm | | |
| Protection category | IP20 | | |
| Min. insul. strip length | 8 mm | | |
| Rated current | 12 A | | |
| Overvoltage category | III | III | II |
| Pollution degree | 3 | 2 | 2 |
| Rated voltage | 160 V | 400 V | 400 V |
| Rated test voltage | 2.5 kV | 2.5 kV | 2.5 kV |
| Terminal data | | | |
| rat.wiring solid AWGmax | 0.08 mm ² - 2 mm ² / AWG 28 - AWG 14 | | |
| rat.wiring strand.AWGmax | 0.08 mm ² - 2 mm ² / AWG 28 - AWG 14 | | |
| Approvals | | | |
| extended wiring UL | 2 AWG 16-18, or 1 AWG 16 stranded with 1 AWG 18 solid, or 1 AWG 16 stranded with 1 AWG 18 stranded | | |
| / / | | | |
| approval UL - File No. | 300 V / 15 A / 28 - 12 E121004 | | |
|  2.5 mm ² | 500 V / 6 kV / 13.5 A | | |
| Material | | | |
| insulating material | PA66 | | |
| flammability class | V0 | | |
| contact material | CuSn | | |
| Contact surface | Sn | | |
| terminal body thread | M3 | | |
| terminal body material | CuZnPb | | |
| terminal body surface | Ni | | |
| screw thread | M3 | | |
| screw material | 8,8 | | |

Technical Data

| | |
|-----------------------------|-------------------------------|
| screw surface | Zn Cr(VI)-frei/free |
| Glow-Wire Flammability GWFI | 960 °C acc. to IEC 60695-2-12 |
| Glow-Wire Flammability GWIT | 775 °C acc. to IEC 60695-2-13 |

Climatic Data

| | |
|-------------------------|--------|
| upper limit temperature | 105 °C |
| lower limit temperature | -40 °C |

general

| | |
|-----------|--------------|
| Tolerance | ISO 2768 -mH |
|-----------|--------------|

U | Contact

Data sheet
RP018xxVBLC Type 262

Page 4/6

P/N
312621xx

xx=number of poles

2023/06/26

Version: C

Accessories

| P/N | Designation |
|-------------|-------------------------------------------------|
| 700025-01-9 | Coding star white with a group of 6 coding pins |

© 2023 METZ CONNECT - Technische Änderungen vorbehalten! Subject to modifications! Sous réserve de modifications techniques!



U | Contact

Data sheet
RP018xxVBLC Type 262

Page 5/6

P/N
312621xx

xx=number of poles

2023/06/26

Version: C

Counterpart

| P/N | Designation |
|-------------|----------------------|
| 312631 | PT118xxVBEC Typ 263 |
| 312641 | PT118xxVBBC Type 264 |
| 312651 | PT118xxHBEC Type 265 |
| 312661 | PT118xxHBBC Type 266 |
| PR118xxHBBN | PR118xxHBBN |
| PR118xxVBBN | PR118xxVBBN |

U | Contact

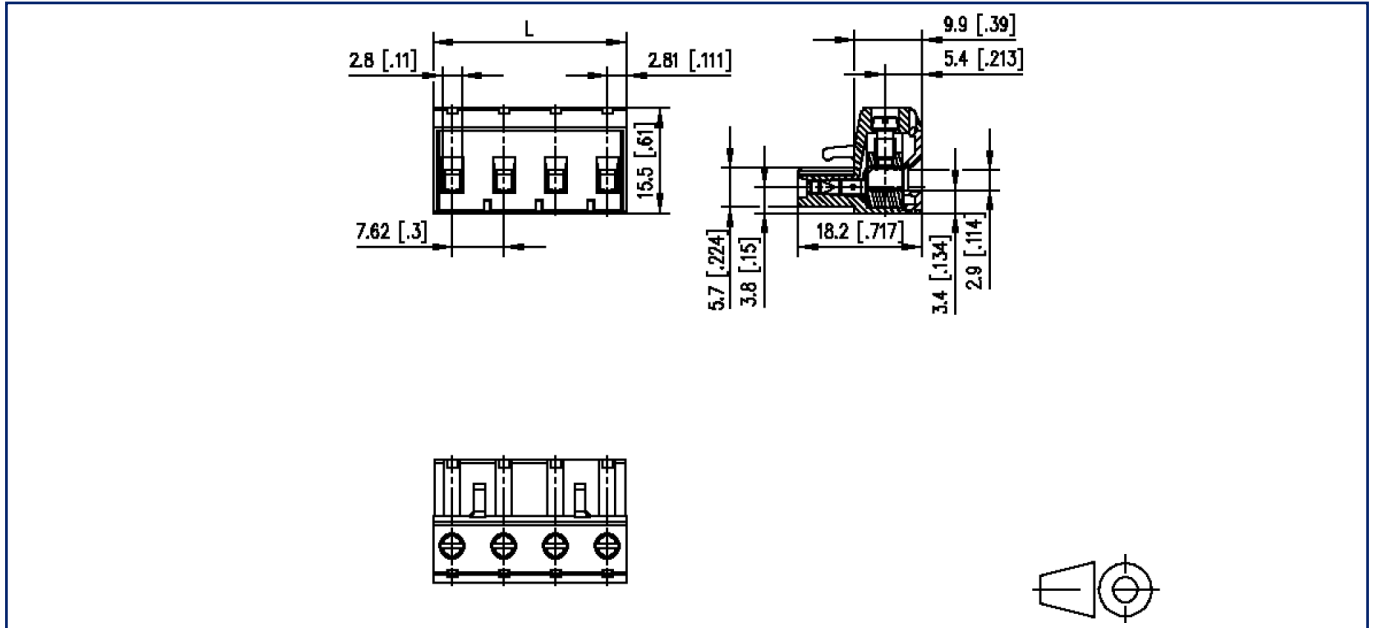
Data sheet
RP018xxVBLC Type 262

Page 6/6

P/N
312621xx
 xx=number of poles
 2023/06/26
 Version: C

Illustrations

Dimensional drawing



$L = (\text{pole size} - 1) \times \text{centerline} + 5.62 \text{ mm} [0.221]$

