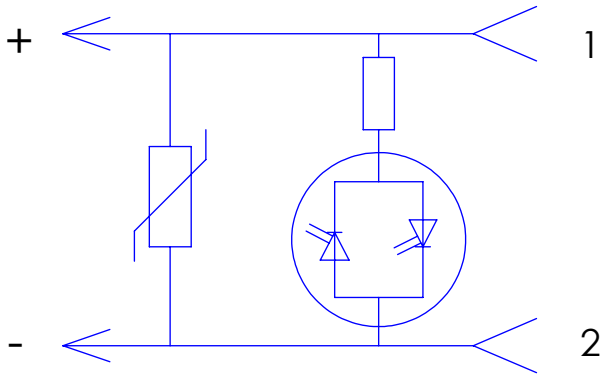


VALVE PIN #	COLOR
1	BRN
2	BLU
GND	GRN/YEL



CIRCUIT J  
LED W/ MOV  
110V

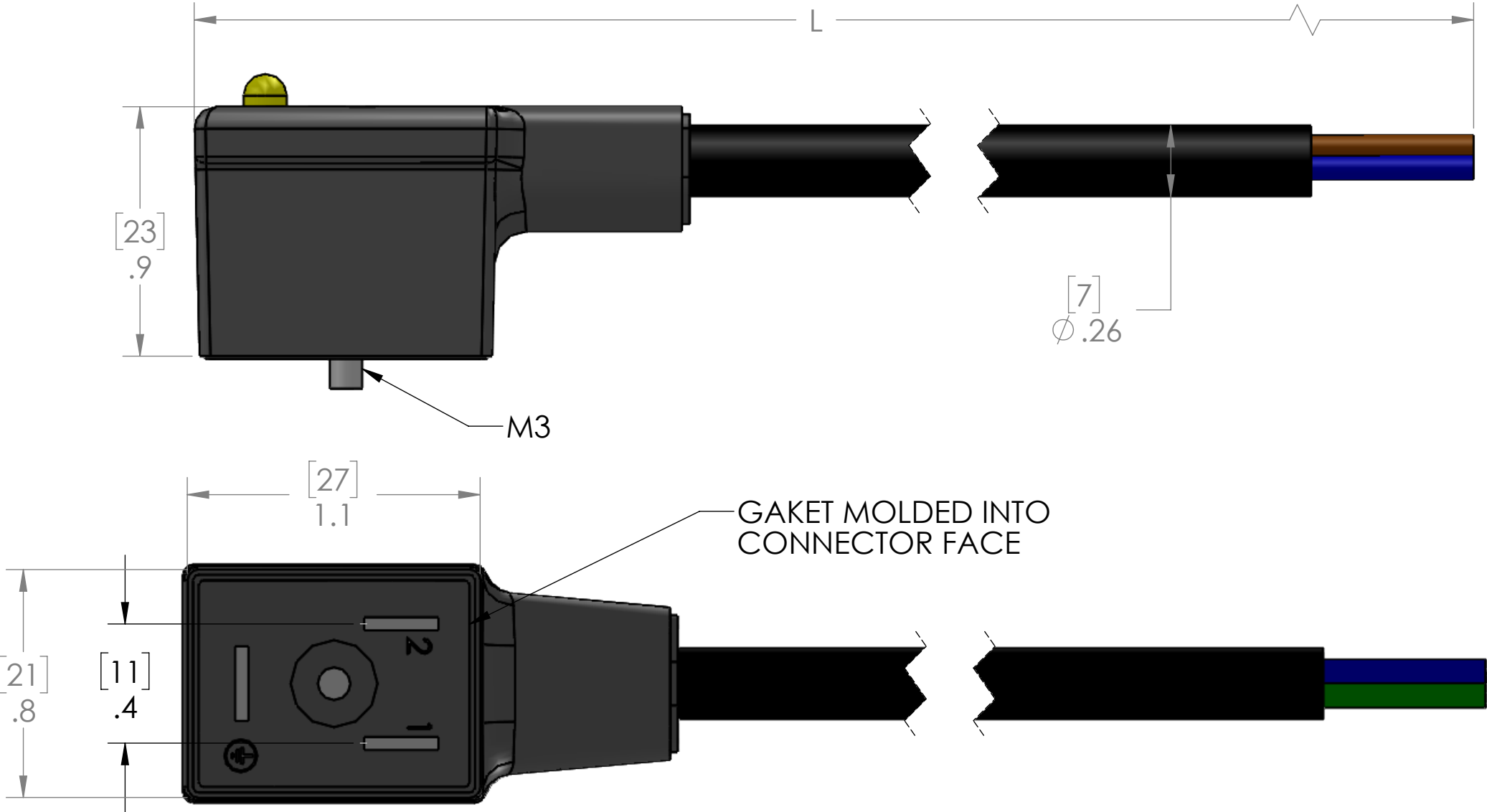


TABLE A		
P/N	L	STD?
VDJ-180-00	39" [1M]	NO
VDJ-280-00	79" [2M]	YES
VDJ-380-00	118" [3M]	NO
VDJ-480-00	157" [4M]	NO
VDJ-580-00	197" [5M]	YES
VDJ-680-00	236" [6M]	NO
VDJ-880-00	315" [8M]	NO
VDJ-A80-00	393" [10M]	YES

PARTS LISTED AS NOT BEING STANDARD  
MAY REQUIRE MINIMUM ORDERS

MATERIALS:	
CABLE:	18/3 BLACK PVC JACKET
BODY:	TPE
CONTACTS:	SILVER PLATED COPPER ALLOY
SCREW:	ZINC PLATED STEEL
TEMP:	-25°C TO 90°C
SEAL:	IP65

**PROPRIETARY AND CONFIDENTIAL**  
THE INFORMATION CONTAINED IN THIS  
DRAWING IS THE SOLE PROPERTY OF  
MENCOM CORPORATION. ANY  
REPRODUCTION IN PART OR AS A WHOLE  
WITHOUT THE WRITTEN PERMISSION OF  
MENCOM CORPORATION IS  
PROHIBITED.

VOLTS	110V
AMPS	10A
TEMP:	90°C

UNLESS OTHERWISE SPECIFIED:	DRAWN BY	ADM
DIMENSIONS ARE IN INCHES AND [MM]	DRAWN DATE	04/29/2022
	CHECKED BY	
	CHECK DATE	
MATERIAL	COMMENTS:	
FINISH		
DO NOT SCALE DRAWING		

MENCOM CORPORATION		
TITLE: I/S B 110V MOV LED 2+E		
SIZE <b>B</b>	DWG. NO. VDJ-ZZ80-00	REV <b>C</b>
SCALE: 2:1	WEIGHT:	SHEET 1 OF 1