

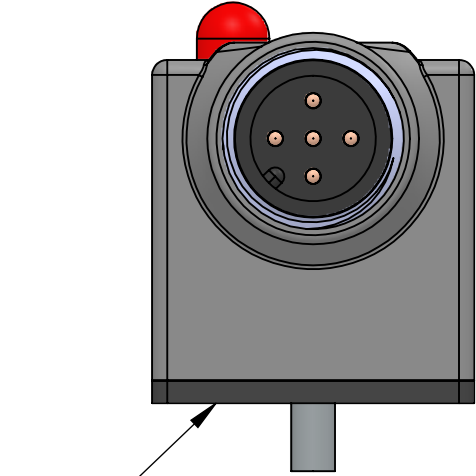
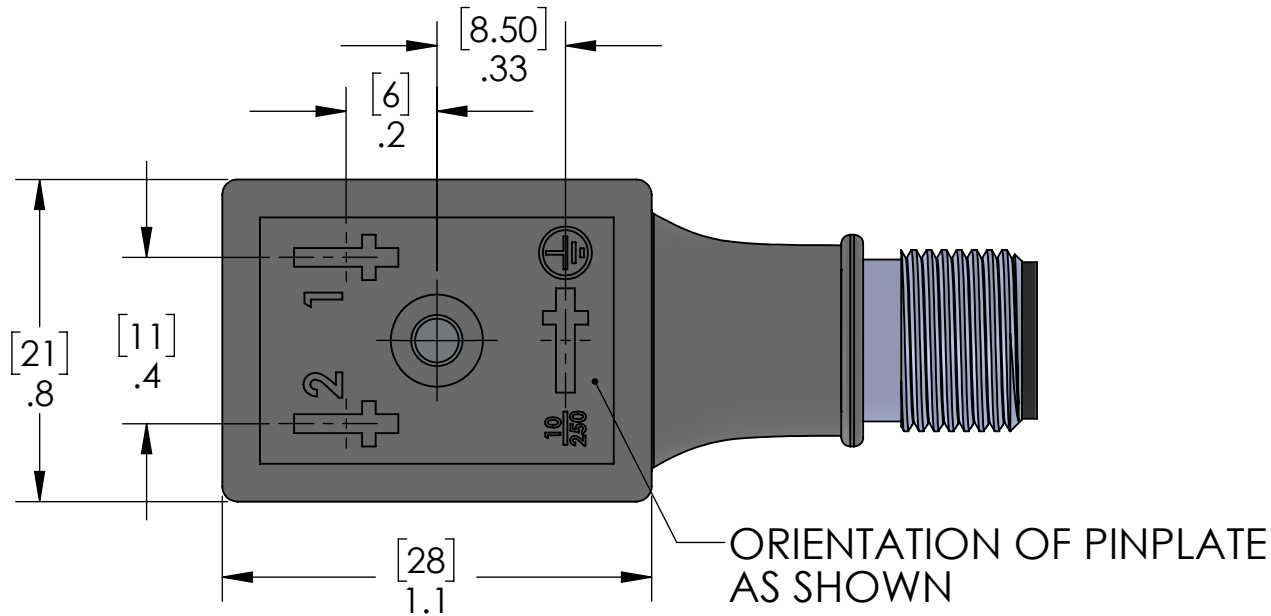
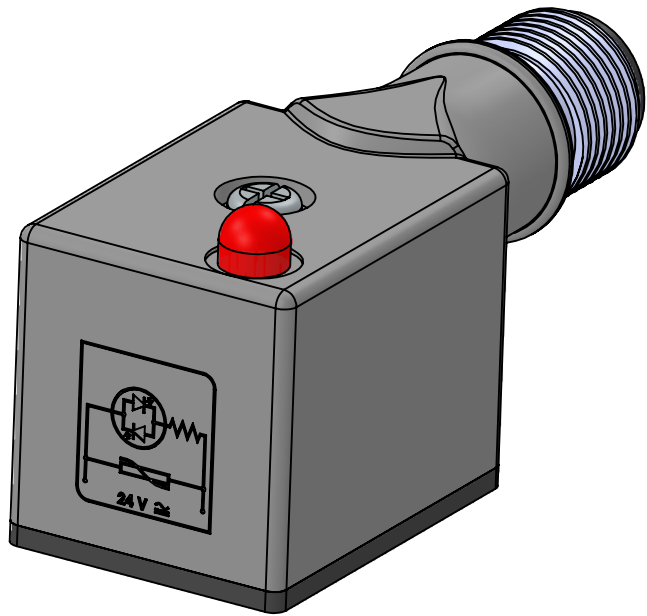
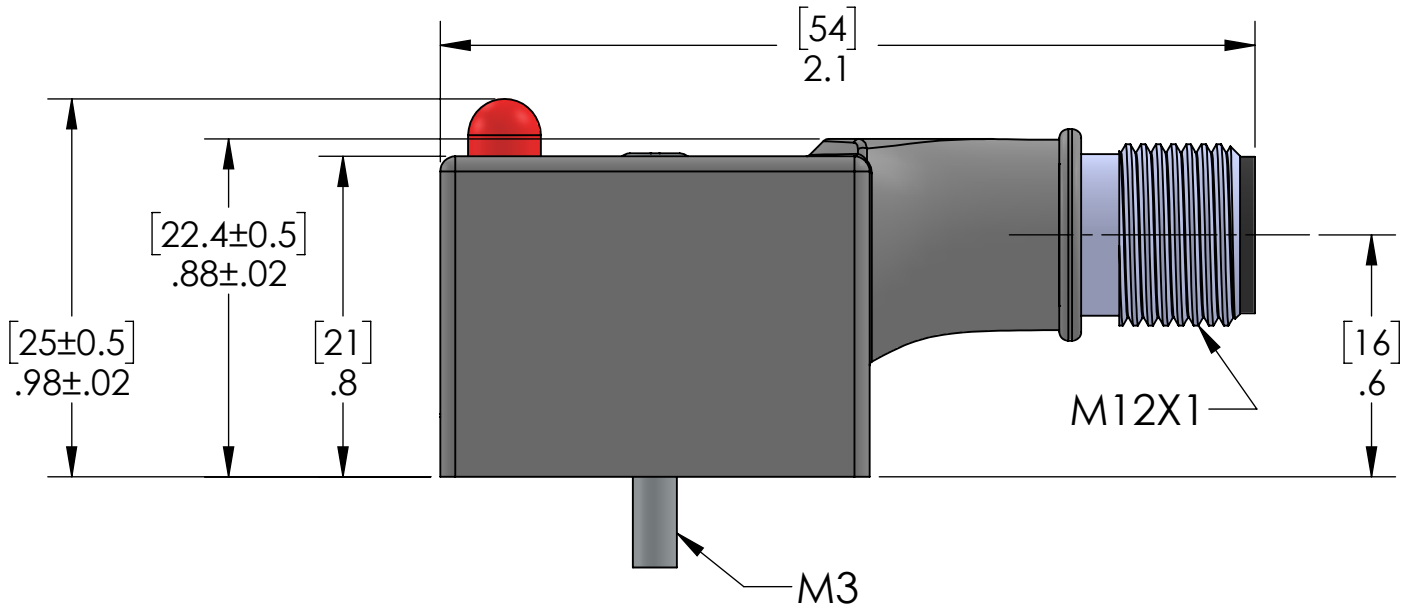
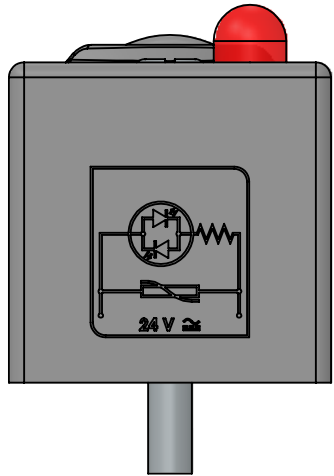
DIN		M12
1	----	4
2	----	3
GND	----	5
N.A.		1
N.A.		2

D

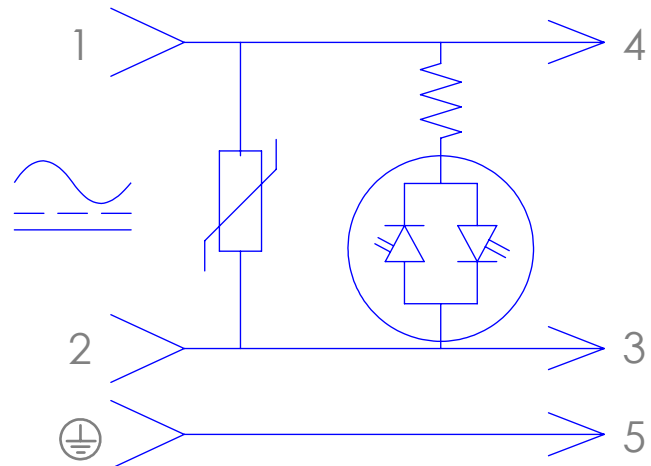
C

B

A



FLAT GASKET INCL.  
(NOT SHOWN IN OTHER VIEWS)



LED W/ MOV 24V

MATERIAL	
DIN CONNECTOR	
BODY:	BLACK POLYAMIDE
CONTACTS:	SILVER PLATED COPPER ALLOY
GASKET:	THERMOPLASTIC
SCREW:	STEEL ZINC PLATE
MDC CONNECTOR	
BODY:	NICKEL PLATED BRASS
CONTACTS:	GOLD PLATED COPPER ALLOY
INSERT:	BLACK POLYAMIDE
PROTECTION:	IP65 EN 60529 (DIN 40050)

ADAPTER	
FORM:	B RECTANGULAR IND. STD
CIRCUIT:	LED BIPOLAR + VDR 24V
LED:	RED LED
GASKET:	FLAT GASKET
CONNECTOR:	M12

PROPRIETARY AND CONFIDENTIAL  
THE INFORMATION CONTAINED IN THIS  
DRAWING IS THE SOLE PROPERTY OF  
MENCOM CORPORATION. ANY  
REPRODUCTION IN PART OR AS A WHOLE  
WITHOUT THE WRITTEN PERMISSION OF  
MENCOM CORPORATION IS  
PROHIBITED.

VOLTS	24 V
AMPS	4 A
TEMP:	-25 C / +90 C

UNLESS OTHERWISE SPECIFIED:	DRAWN BY	DCG
DIMENSIONS ARE IN INCHES AND [MM]	DRAWN DATE	02/24/2023
	CHECKED BY	JJH
	CHECK DATE	02/24/2023
	COMMENTS:	
MATERIAL		
FINISH		
DO NOT SCALE DRAWING		

MENCOM CORPORATION		
TITLE:		
SIZE	DWG. NO.	REV
B	VDG-029-3501	B
SCALE: 2:1	WEIGHT:	SHEET 1 OF 1