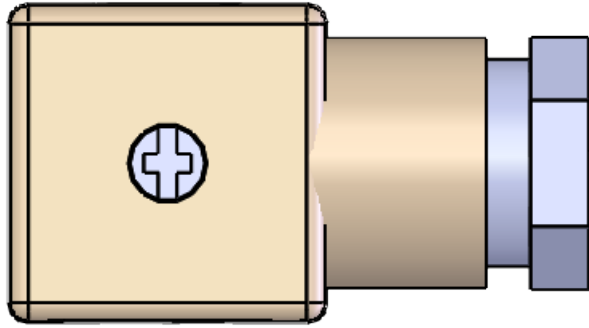


8 7 6 5 4 3 2 1

D

D

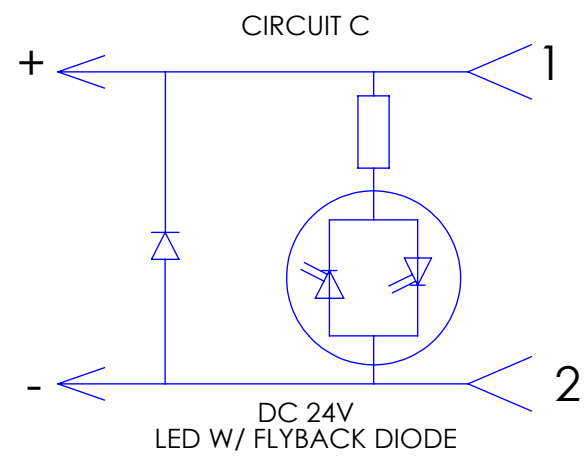
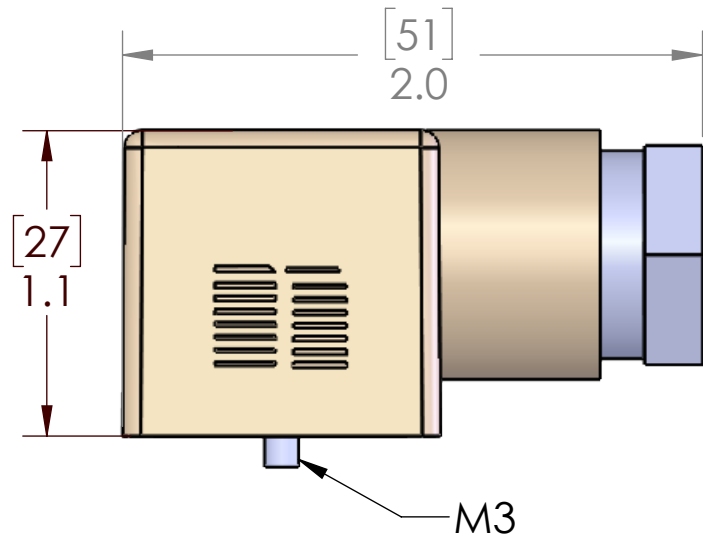


PG11 - FOR 8 TO 10MM DIA. CABLES

C

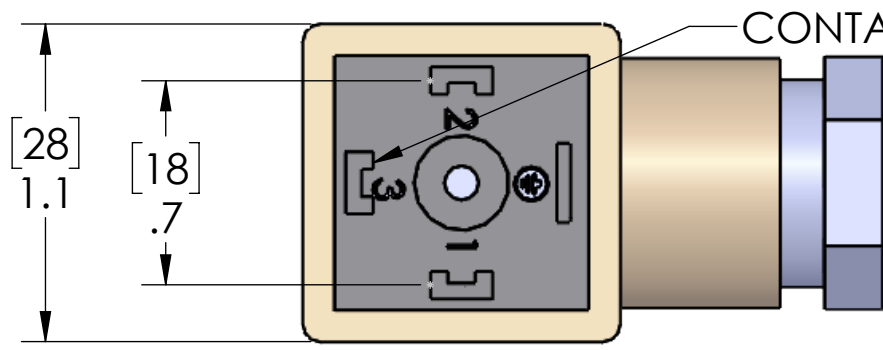
C

NOTE: GASKET INCLUDED WITH PART BUT NOT SHOWN ON PRINT FOR CLARITY



B

B



CONTACT NOT PRESENT IN THIS LOCATION

| | |
|--------------|----------------------------|
| MATERIALS: | |
| HOUSING: | TRANSLUCENT POLYAMIDE |
| CONTACTS: | SILVER PLATED COPPER ALLOY |
| GASKET: | THERMOPLASTIC RUBBER |
| SCREW: | ZINC PLATED STEEL |
| RATINGS: | |
| VOLTAGE: | 24 VDC |
| AMPERAGE: | 1A MAX |
| WIRE AWG: | 18AWG MAX |
| CABLE DIA.: | 8 - 10mm |
| TEMPERATURE: | -40°C / +125°C |
| PROTECTION: | IP65 |

PROPRIETARY AND CONFIDENTIAL
 THE INFORMATION CONTAINED IN THIS DRAWING IS THE SOLE PROPERTY OF MENCOM CORPORATION. ANY REPRODUCTION IN PART OR AS A WHOLE WITHOUT THE WRITTEN PERMISSION OF MENCOM CORPORATION IS PROHIBITED.

| | | |
|--|------------|------------|
| UNLESS OTHERWISE SPECIFIED: DIMENSIONS ARE IN INCHES AND [MM] | DRAWN BY | ADM |
| | DRAWN DATE | 05/15/2023 |
| | CHECKED BY | JJH |
| | CHECK DATE | 05/15/2023 |
| COMMENTS: | | |
| MATERIAL | | |
| FINISH | | |
| DO NOT SCALE DRAWING | | |

| | | |
|--|------------------------|-----------------|
| MENCOM CORPORATION | | |
| TITLE: DIN A 24VDC LED W/DIODE PG11 | | |
| SIZE B | DWG. NO. VAC-021-00 | REV B |
| SCALE: 2:1 | WEIGHT: | SHEET 1 OF 1 |

8 7 6 5 4 3 2 1

A

A