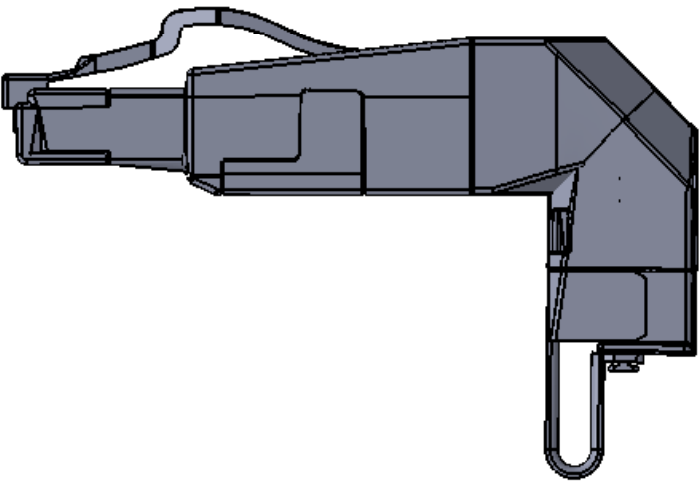
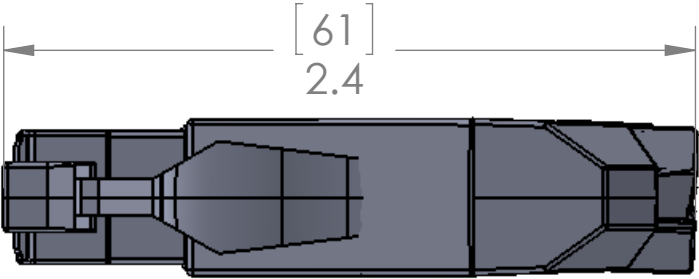
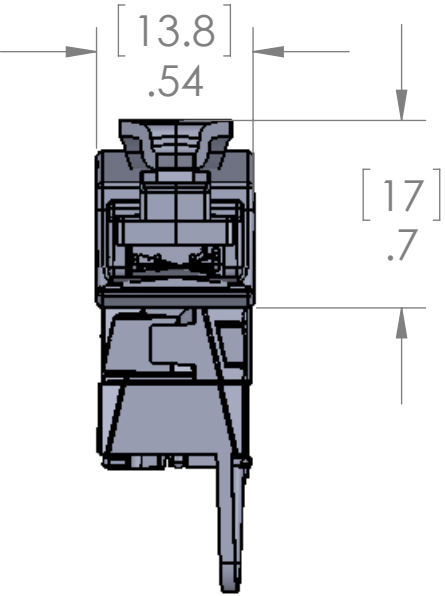


REVISIONS			
REV.	DESCRIPTION	DATE	APPROVED
A	DRAWN IN SW	5/28/2015	JJH

Attributes:

- Cat 6A class EA RJ45 plug for field assembly without special tools
- Zinc diecast housing provides full shielding
- Acceptable wire size:
Stranded: 27/7 to 22/7, wire dia of 0.46 to 0.76mm
Solid: 26/1 to 22/1, wire dia of 0.40 to 0.64mm
- Transmission Characteristics to Cat 6A per ISO/IEC 11801 Ed 2.2:2011-06
- Compliance to class EA per ISO/IEC 11801 Ed 2.2:2011-06 and DIN EN 50173-1:2011-09
- 10GBit per IEEE 802.3an
- Suitable for power over ethernet (PoE, PoE plus and UPoE)
- Cable jacket diameters of 5.5 - 10.5mm
- Degree of protection: IP20
- May be re-terminated if necessary



PROPRIETARY AND CONFIDENTIAL
THE INFORMATION CONTAINED IN THIS DRAWING IS THE SOLE PROPERTY OF MENCOM CORPORATION. ANY REPRODUCTION IN PART OR AS A WHOLE WITHOUT THE WRITTEN PERMISSION OF MENCOM CORPORATION IS PROHIBITED.

UNLESS OTHERWISE SPECIFIED: DIMENSIONS ARE IN INCHES AND [MM]		NAME	MENCOM CORPORATION	
		DRAWN	TITLE: ANGLED RJ45 CAT6 PLUG	
		CHECKED		
		ENG APPR.		
		MFG APPR.		
MATERIAL		Q.A.	SIZE B	
FINISH		COMMENTS:		
DO NOT SCALE DRAWING			DWG. NO. RJ45-PN-FW-R	REV A
			SCALE: 3:2	WEIGHT: SHEET 1 OF 1