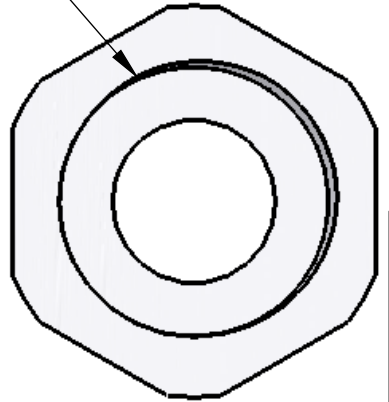
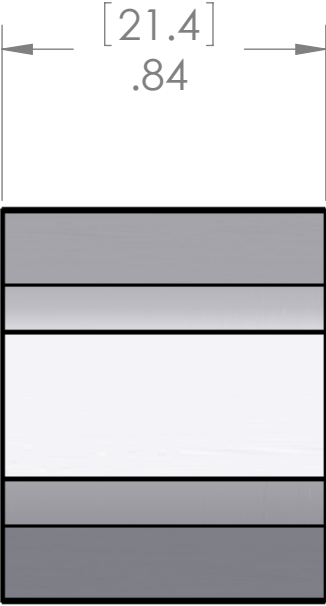


REVISIONS			
REV.	DESCRIPTION	DATE	APPROVED
A	REDRAWN IN SW	5/10/2011	

1/2-14 NPT



[25.9]
Ø1.02



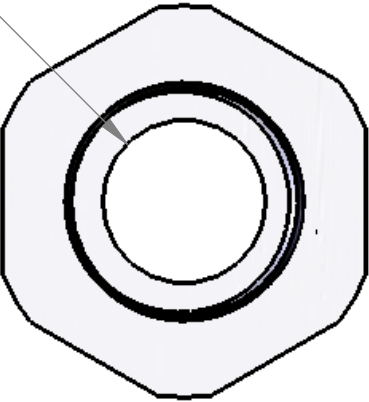
[21.4]
.84

PG9



[6.5]
.26

[10.8]
Ø.43



MATERIALS:

BODY:	NICKEL PLATED BRASS
O-RING:	BUNA-N

PROPRIETARY AND CONFIDENTIAL
THE INFORMATION CONTAINED IN THIS
DRAWING IS THE SOLE PROPERTY OF
MENCOM CORPORATION. ANY
REPRODUCTION IN PART OR AS A WHOLE
WITHOUT THE WRITTEN PERMISSION OF
MENCOM CORPORATION IS
PROHIBITED.

UNLESS OTHERWISE SPECIFIED:		NAME
DIMENSIONS ARE IN INCHES AND [MM]	DRAWN	CAM
	CHECKED	
	ENG APPR.	
	MFG APPR.	
	Q.A.	
	COMMENTS:	
MATERIAL		
FINISH		
DO NOT SCALE DRAWING		

MENCOM CORPORATION

TITLE:
PG9 MALE TO 1/2" NPT FEM ADAPTER

SIZE B	DWG. NO. PG11-1/2	REV A
------------------	----------------------	-----------------

SCALE: 2:1 WEIGHT: SHEET 1 OF 1