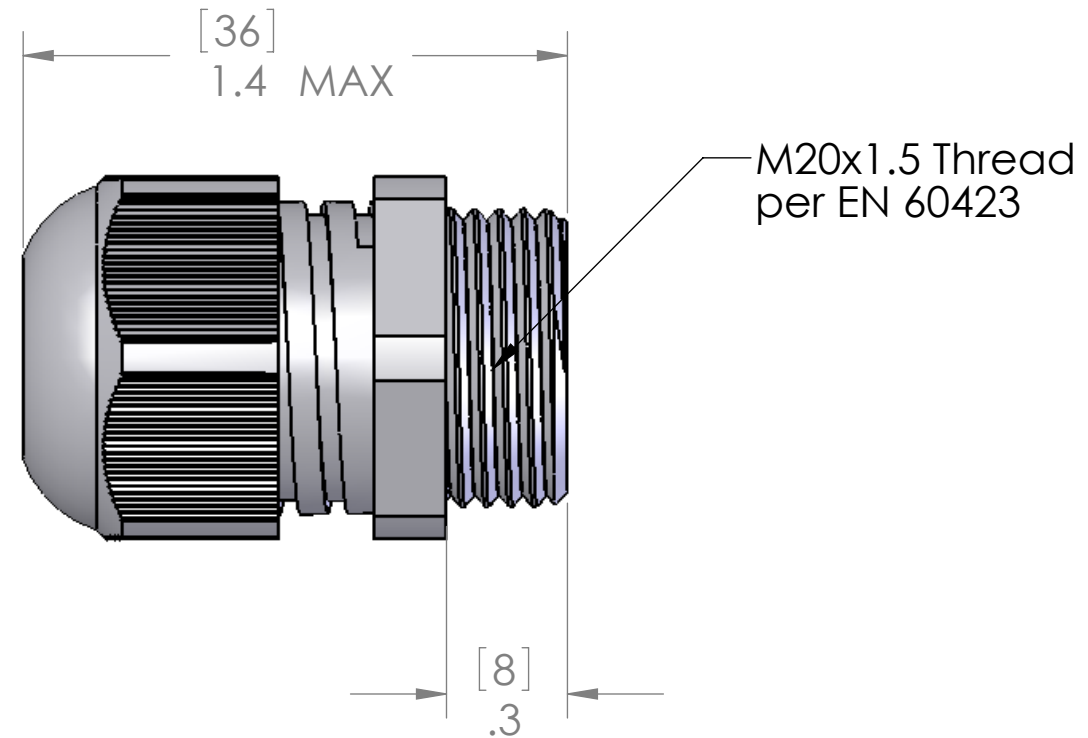
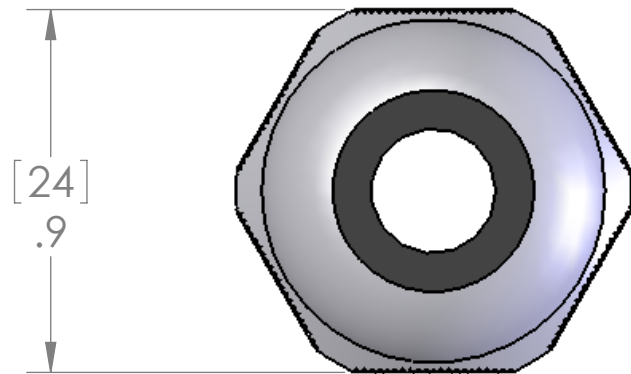


REVISIONS		
REV.	DESCRIPTION	DATE
A	REDRAWN IN SW	5/8/2007



PROPERTIES	
EQUIPMENT GROUP:	II
CATEGORY / ZONE	2G and 2D / 1, 2, 21, 22
TYPE OF PROTECTION:	Eex e , INCREASED SAFETY
PROTECTION GRADE:	IP66
CABLE INSTALLATION:	FIXED
TEST STANDARD:	EN 50014 / EN 50019
EC-TYPE CERTIFICATE:	PTB 99 ATEX 3128

MATERIALS	
BODY:	BLACK POLYAMIDE PA6
SEALS:	INNER: TPE OUTER: CR/NBR
DUST CAP:	POLYETHYLENE PE-LD

SPECIFICATIONS:	
TIGHTENING TORQUE:	2.7 Nm
TEMPERATURE:	-30°C - +70°C

PART NUMBER	COLOR	SEALING RANGE
PCGEX-M20-B	BLACK	5.5-13mm

UNLESS OTHERWISE SPECIFIED:		NAME		MENCOM CORPORATION							
DIMENSIONS ARE IN INCHES	DRAWN	DWM						TITLE: PLASTIC CABLE GLAND M20			
	CHECKED										
	ENG APPR.										
	MFG APPR.										
	Q.A.										
MATERIAL		COMMENTS:		SIZE	DWG. NO.			REV			
FINISH				B	PCGEX-M20-B			A			
DO NOT SCALE DRAWING				SCALE: 2:1		WEIGHT:		SHEET 1 OF 1			

PROPRIETARY AND CONFIDENTIAL

THE INFORMATION CONTAINED IN THIS
DRAWING IS THE SOLE PROPERTY OF
MENCOM CORPORATION. ANY
REPRODUCTION IN PART OR AS A WHOLE
WITHOUT THE WRITTEN PERMISSION OF
MENCOM CORPORATION IS
PROHIBITED.