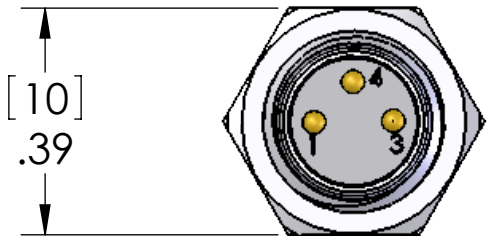
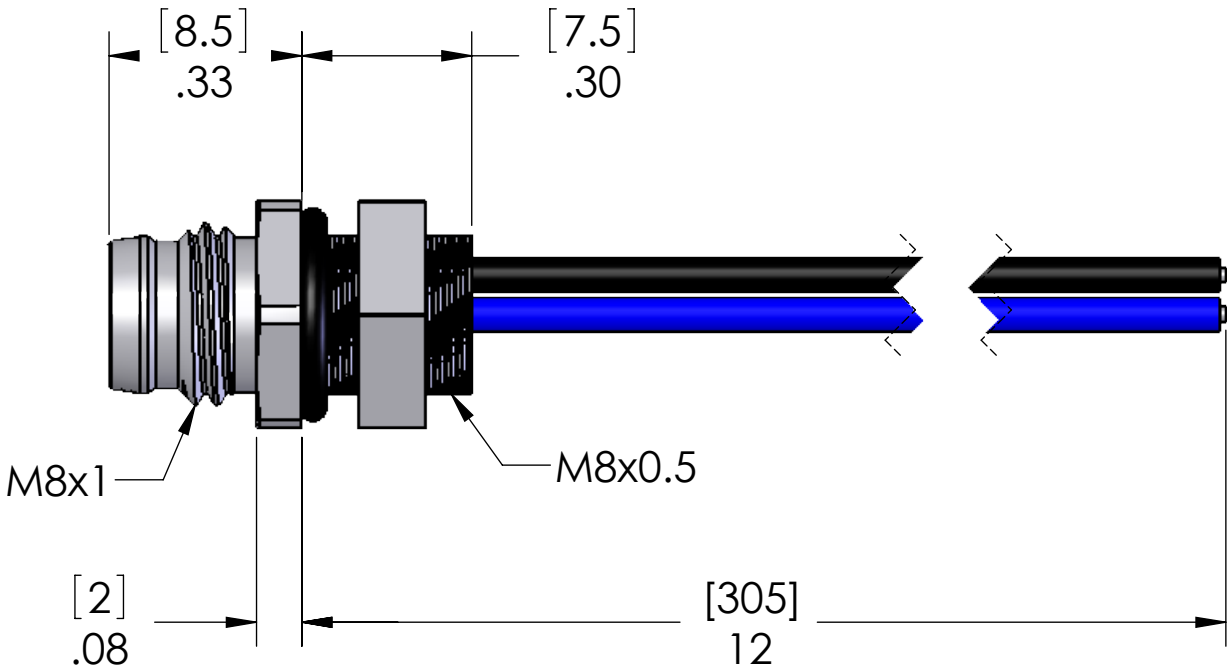


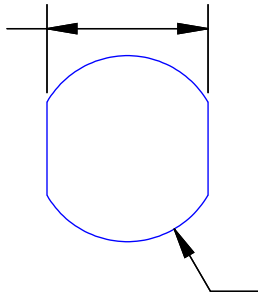
PIN #	COLOR
1	BROWN
2	N/A
3	BLUE
4	BLACK

REVISIONS			
REV.	DESCRIPTION	DATE	APPROVED
A	REDRAWN IN SW	9/30/2005	
B	REDESIGN SHELL	1/22/2007	



[10]
.39

$7.10^{+0.10}_0$
 $.280^{+.004}_{-.000}$



SUGGESTED
CUTOUT

$8.20^{+0.10}_0$
 $\phi .323^{+.004}_{-.000}$

CONNECTOR MATERIALS:	
SHELL:	NICKEL PLATED BRASS
INSERT:	POLYAMIDE
CONTACTS:	GOLD PLATED COPPER ALLOY
WIRE:	24AWG UL1007/1569
JAM-NUT:	NICKEL PLATED BRASS
O-RING:	NBR

PROPRIETARY AND CONFIDENTIAL
THE INFORMATION CONTAINED IN THIS
DRAWING IS THE SOLE PROPERTY OF
MENCOM CORPORATION. ANY
REPRODUCTION IN PART OR AS A WHOLE
WITHOUT THE WRITTEN PERMISSION OF
MENCOM CORPORATION IS
PROHIBITED.

VOLTS	60V
AMPS	3A
TEMP	90°C
SPECIFICATIONS	

UNLESS OTHERWISE SPECIFIED:		NAME
DIMENSIONS ARE IN INCHES AND [MM]	DRAWN	BEM
	CHECKED	
	ENG APPR.	
	MFG APPR.	
	Q.A.	
MATERIAL	COMMENTS:	
FINISH		
DO NOT SCALE DRAWING		

P/N	L
NAN-T-3MR-M8	12" [0.3m]
NAN-T-3MR-M8-0.5M	19" [0.5m]
NAN-T-3MR-M8-1M	40" [1m]
NAN-T-3MR-M8-2M	79" [2m]
NAN-T-3MR-M8-3M	118" [3m]
NAN-T-3MR-M8-5M	197" [5m]

MENCOM CORPORATION

TITLE:		
3 PL ML M8 RECP		
SIZE	DWG. NO.	REV
B	NAN-T-3MR-M8-ZZ	B
SCALE: 3:1	WEIGHT:	SHEET 1 OF 1