

PIN #	COLOR
A	WHITE
B	RED
C	GREEN/YELLOW
D	ORANGE
E	BLACK
F	BLUE

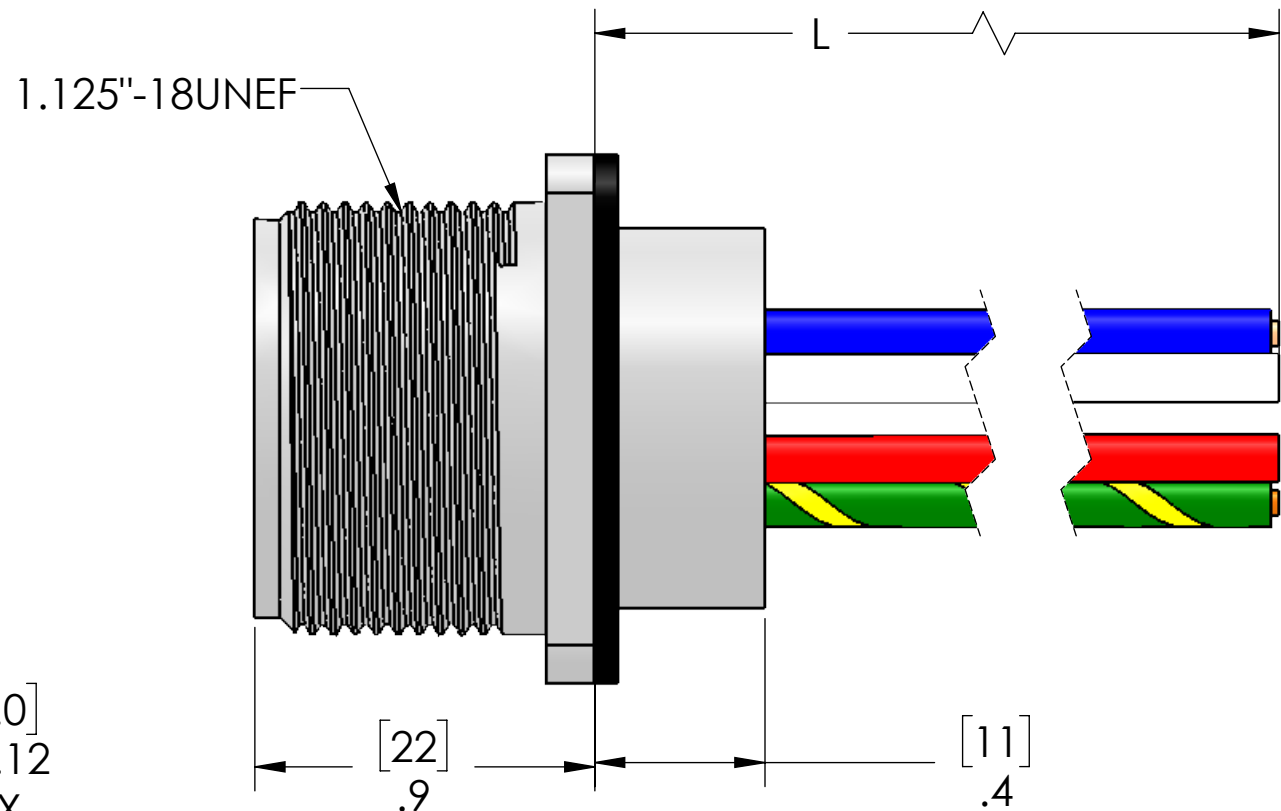
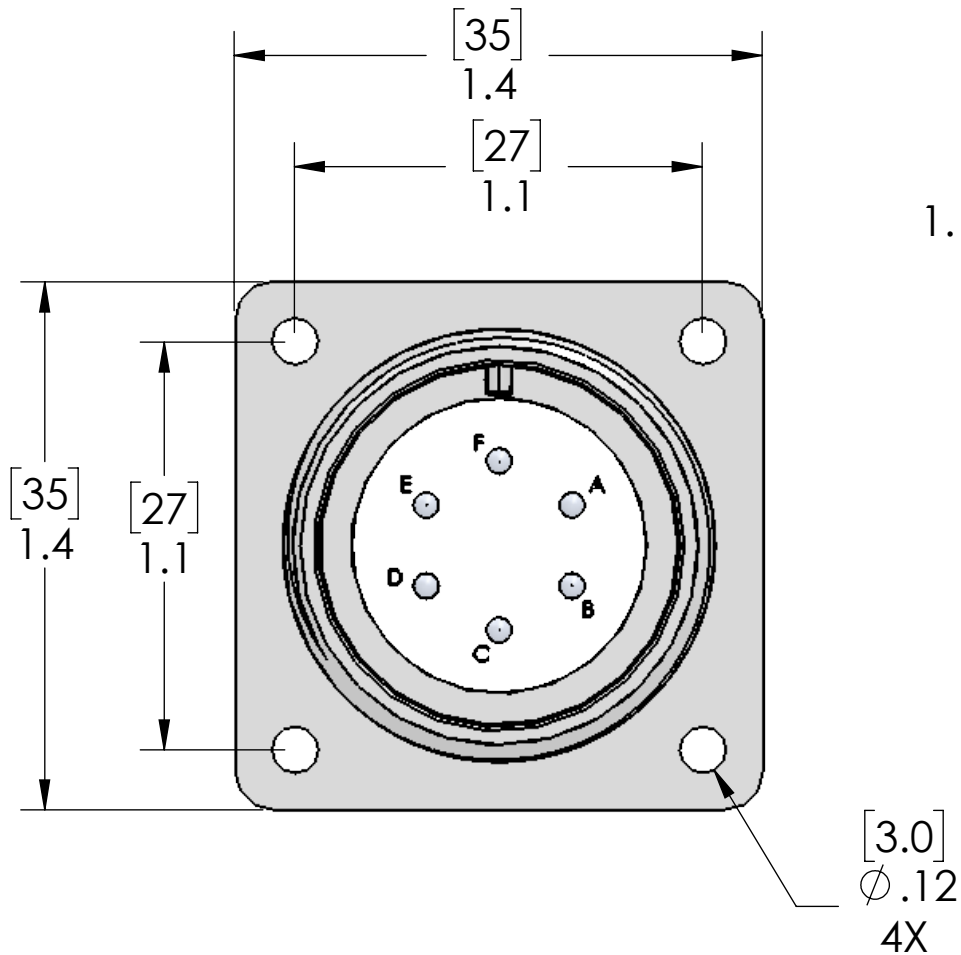


TABLE A	
P/N	L
MS18-6MR-0.3M-PM	12" [0.3M]
MS18-6MR-0.5M-PM	19" [0.5M]
MS18-6MR-1M-PM	40" [1M]
MS18-6MR-2M-PM	79" [2M]
MS18-6MR-5M-PM	197" [5M]
MS18-6MR-10M-PM	393" [10M]

MATERIALS	
SHELL:	NICKEL PLATED ZINC ALLOY
CONTACTS:	SILVER PLATED COPPER ALLOY
WIRES:	UL1015 16AWG
GASKET:	TPE

PROPRIETARY AND CONFIDENTIAL
THE INFORMATION CONTAINED IN THIS
DRAWING IS THE SOLE PROPERTY OF
MENCOM CORPORATION. ANY
REPRODUCTION IN PART OR AS A WHOLE
WITHOUT THE WRITTEN PERMISSION OF
MENCOM CORPORATION IS
PROHIBITED.

VOLTS	600V
AMPS	8A
TEMP:	105C

UNLESS OTHERWISE SPECIFIED: DIMENSIONS ARE IN INCHES AND [MM]	DRAWN BY	ADM
	DRAWN DATE	09/22/2016
	CHECKED BY	
	CHECK DATE	
MATERIAL	COMMENTS:	
FINISH		
DO NOT SCALE DRAWING		

MENCOM CORPORATION		
TITLE: 6 PL MAL PM RCP MS18		
SIZE B	DWG. NO. MS18-6MR-ZZ-PM	REV X
SCALE: 2:1	WEIGHT:	SHEET 1 OF 1