

PIN #	COLOR
A	WHITE
B	RED
C	GREEN/YELLOW
D	ORANGE
E	BLACK

REVISIONS			
REV.	DESCRIPTION	DATE	APPROVED
X	PELIMINARY	1/8/2016	

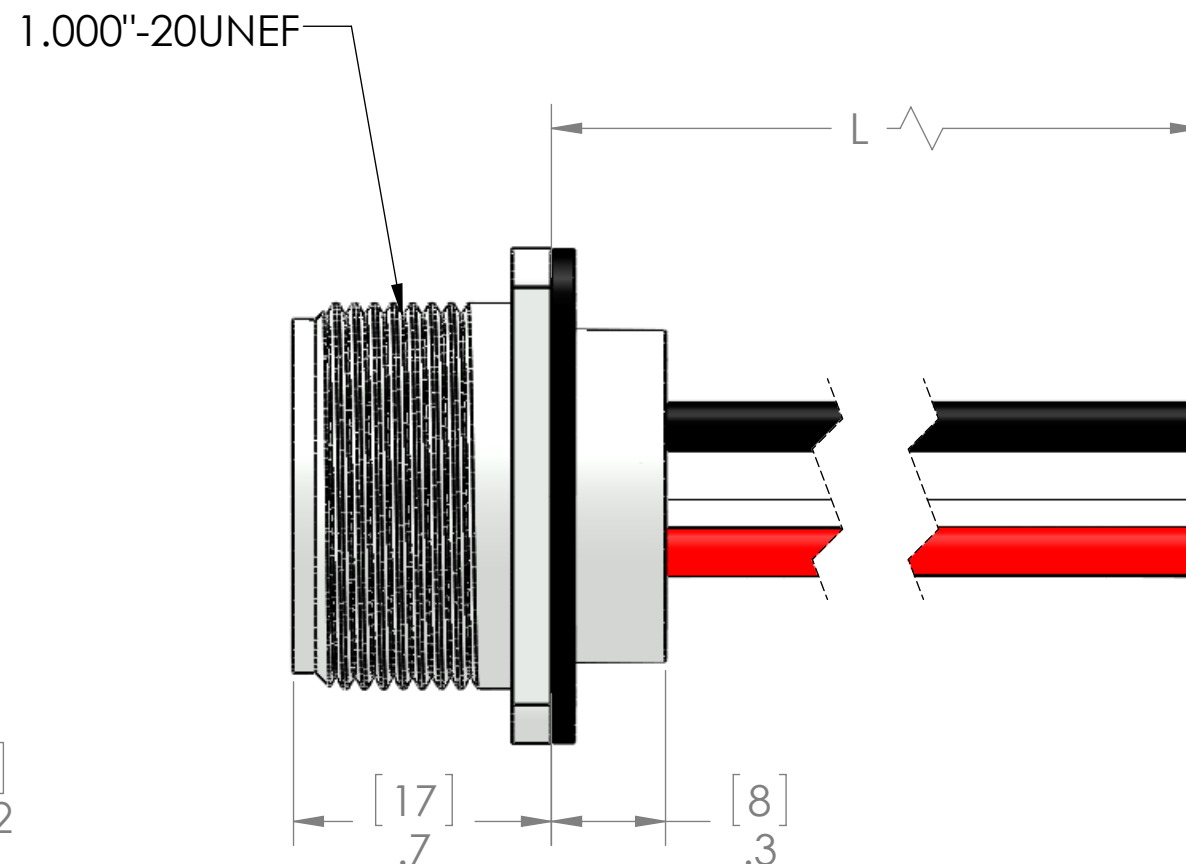
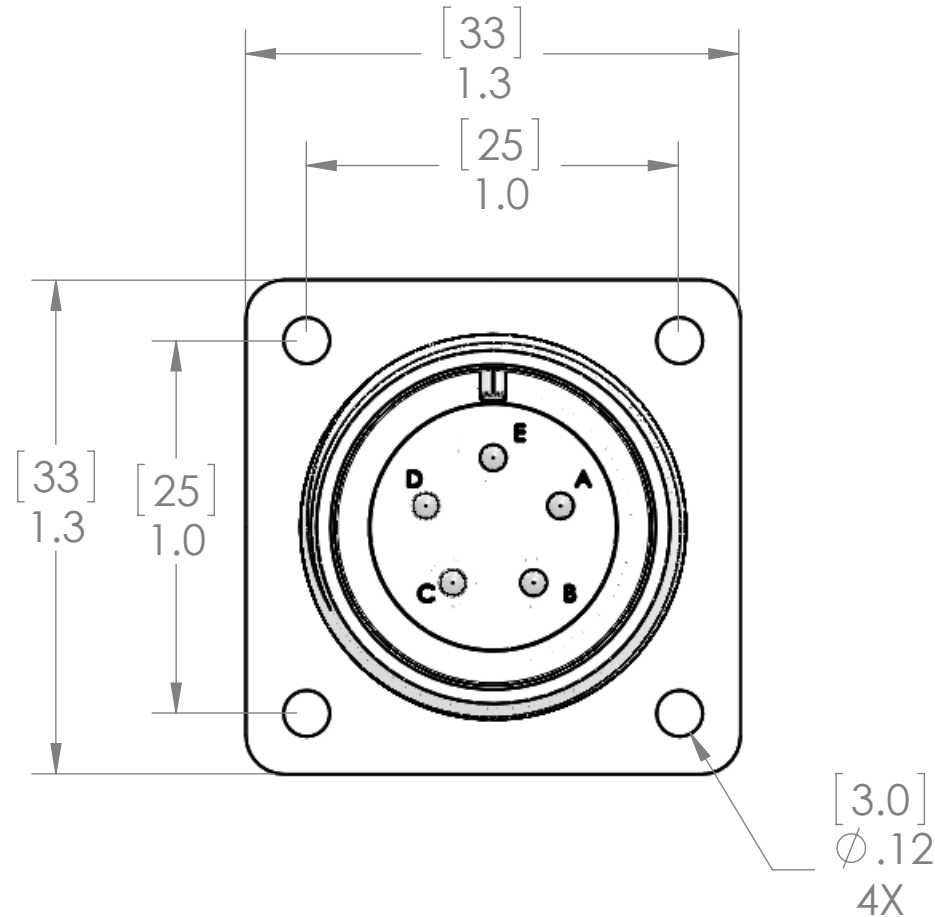


TABLE A	
P/N	L
MS16S-5MR-0.3M-PM	12" [0.3M]
MS16S-5MR-0.5M-PM	19" [0.5M]
MS16S-5MR-1M-PM	40" [1M]
MS16S-5MR-2M-PM	79" [2M]
MS16S-5MR-5M-PM	197" [5M]
MS16S-5MR-10M-PM	393" [10M]

<b>MATERIALS</b>	
<b>SHELL:</b>	<b>NICKEL PLATED ZINC ALLOY</b>
<b>CONTACTS:</b>	<b>SILVER PLATED COPPER ALLOY</b>
<b>WIRES:</b>	<b>UL1015 16AWG</b>
<b>GASKET:</b>	<b>TPE</b>

**PROPRIETARY AND CONFIDENTIAL**

THE INFORMATION CONTAINED IN THIS  
DRAWING IS THE SOLE PROPERTY OF  
MENCOM CORPORATION. ANY  
REPRODUCTION IN PART OR AS A WHOLE  
WITHOUT THE WRITTEN PERMISSION OF  
MENCOM CORPORATION IS  
PROHIBITED.

VOLTS	600V	INTERPRET GEOMETRIC TOLERANCING PER:
AMPS	TBD	MATERIAL
TEMP	105C	FINISH
APPLICATION		DO NOT SCALE DRAWING

UNLESS OTHERWISE SPECIFIED:		NAME
DIMENSIONS ARE IN INCHES AND [MM]	DRAWN	JJH
	CHECKED	
	ENG APPR.	
	MFG APPR.	
INTERPRET GEOMETRIC TOLERANCING PER:	Q.A.	
MATERIAL	COMMENTS:	
FINISH		
DO NOT SCALE DRAWING		

MENCOM CORPORATION			
TITLE:  5 PL ML PM RCP MS16S			
SIZE <b>B</b>	DWG. NO.  MS16S-5MR-ZZ-PM		REV <b>X</b>
SCALE: 2:1		WEIGHT:	SHEET 1 OF 1