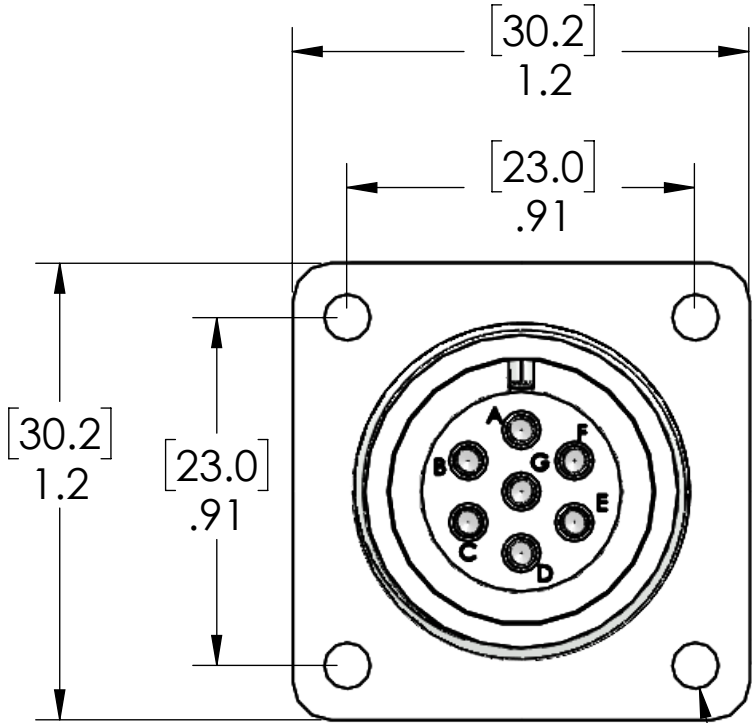


PIN #	COLOR
A	WHITE w/BLACK
B	BLACK
C	WHITE
D	RED
E	ORANGE
F	BLUE
G	GREEN/YELLOW



3.0
Ø .12
4X

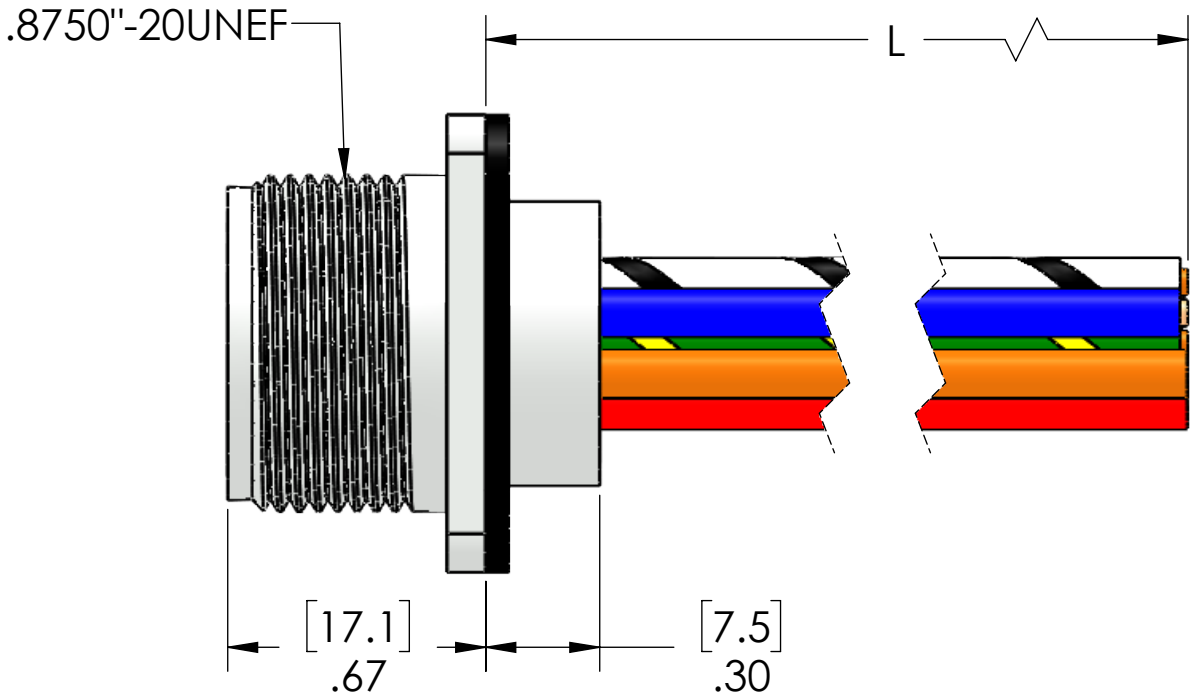


TABLE A	
P/N	L
MS14S-7FR-0.3M-PM	12" [0.3M]
MS14S-7FR-0.5M-PM	19" [0.5M]
MS14S-7FR-1M-PM	40" [1M]
MS14S-7FR-2M-PM	79" [2M]
MS14S-7FR-5M-PM	197" [5M]
MS14S-7FR-10M-PM	393" [10M]

MATERIALS	
SHELL:	NICKEL PLATED ZINC ALLOY
CONTACTS:	SILVER PLATED COPPER ALLOY
INSERT:	PBT
WIRES:	UL1015 16AWG
GASKET:	TPE

PROPRIETARY AND CONFIDENTIAL
THE INFORMATION CONTAINED IN THIS
DRAWING IS THE SOLE PROPERTY OF
MENCOM CORPORATION. ANY
REPRODUCTION IN PART OR AS A WHOLE
WITHOUT THE WRITTEN PERMISSION OF
MENCOM CORPORATION IS
PROHIBITED.

VOLTS	600V
AMPS	5A
TEMP:	105°C

UNLESS OTHERWISE SPECIFIED: DIMENSIONS ARE IN INCHES AND [MM]	DRAWN BY	JJH
	DRAWN DATE	03/02/2018
	CHECKED BY	ADM
	CHECK DATE	03/05/2018
	COMMENTS:	
MATERIAL		
FINISH		
DO NOT SCALE DRAWING		

MENCOM CORPORATION		
TITLE: 7 PL FEM PM RCP MS14S		
SIZE B	DWG. NO. MS14S-7FR-ZZ-PM	REV A
SCALE: 2:1	WEIGHT:	SHEET 1 OF 1