

PIN #	COLOR
A	BLACK
B	WHITE
C	RED
D	GREEN/YELLOW

REVISIONS			
REV.	DESCRIPTION	DATE	APPROVED
A	DRAWN IN SW	1/8/2016	BEM

D

D

C

C

B

B

A

A

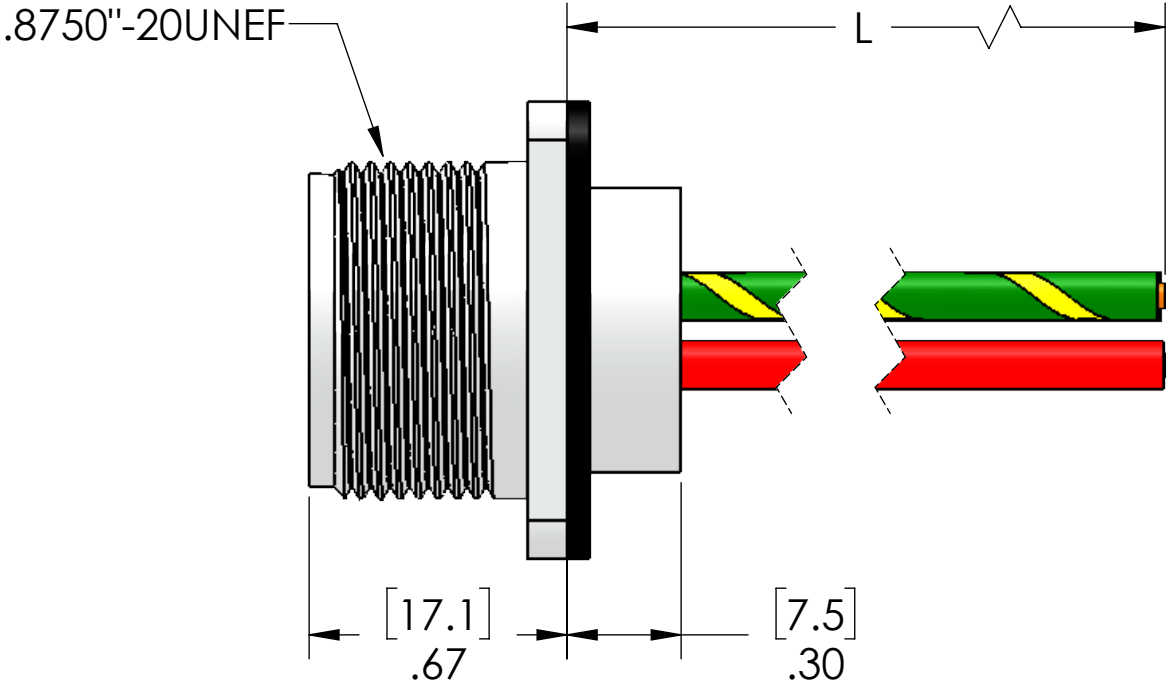
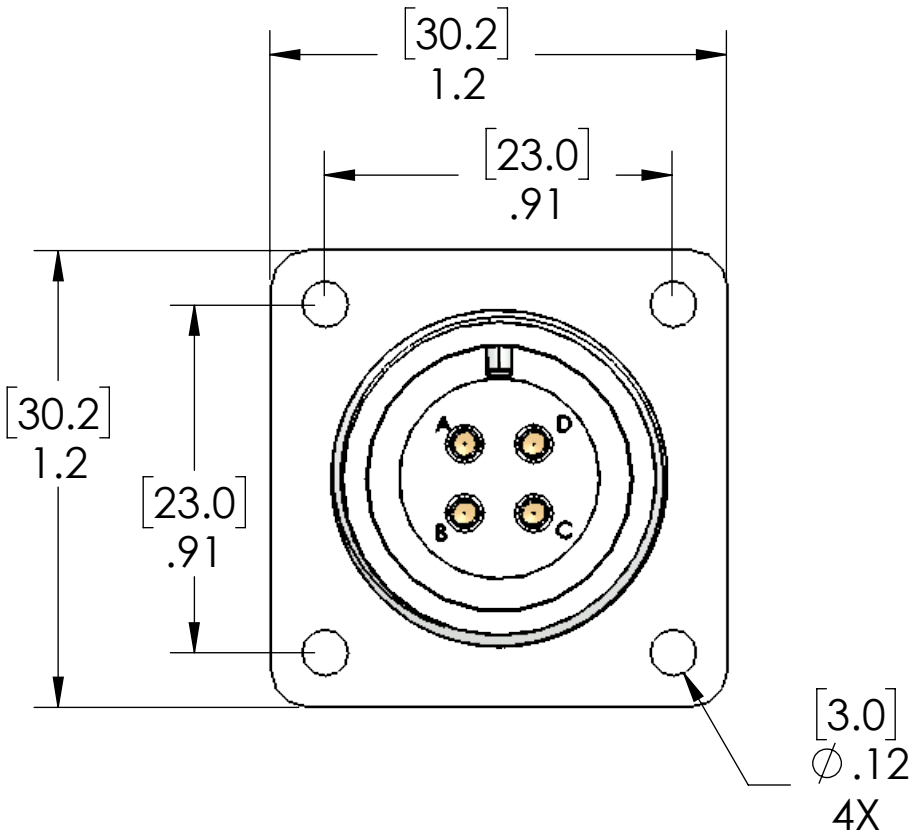


TABLE A	
P/N	L
MS14S-4FR-0.3M-PM	12" [0.3M]
MS14S-4FR-0.5M-PM	19" [0.5M]
MS14S-4FR-1M-PM	40" [1M]
MS14S-4FR-2M-PM	79" [2M]
MS14S-4FR-5M-PM	197" [5M]
MS14S-4FR-10M-PM	393" [10M]

OTHER LENGTHS AVAILABLE,
PLEASE CONSULT FACTORY

MATERIALS	
SHELL:	NICKEL PLATED ZINC ALLOY
CONTACTS:	SILVER PLATED COPPER ALLOY
WIRES:	UL1015 16AWG
GASKET:	TPE

PROPRIETARY AND CONFIDENTIAL
THE INFORMATION CONTAINED IN THIS
DRAWING IS THE SOLE PROPERTY OF
MENCOM CORPORATION. ANY
REPRODUCTION IN PART OR AS A WHOLE
WITHOUT THE WRITTEN PERMISSION OF
MENCOM CORPORATION IS
PROHIBITED.

VOLTS	600V
AMPS	10A
TEMP:	105°C

UNLESS OTHERWISE SPECIFIED: DIMENSIONS ARE IN INCHES AND [MM]	DRAWN BY	ADM
	DRAWN DATE	09/22/2016
	CHECKED BY	
	CHECK DATE	
MATERIAL	COMMENTS:	
FINISH		
DO NOT SCALE DRAWING		

MENCOM CORPORATION		
TITLE:		
4 PL FEM PM RCP MS14S		
SIZE	DWG. NO.	REV
B	MS14S-4FR-ZZ-PM	A
SCALE: 2:1	WEIGHT:	SHEET 1 OF 1