

PIN #	COLOR
A	BLACK
B	GREEN/YELLOW
C	WHITE

REVISIONS			
REV.	DESCRIPTION	DATE	APPROVED
A	DRAWN IN SW	1/8/2016	BEM

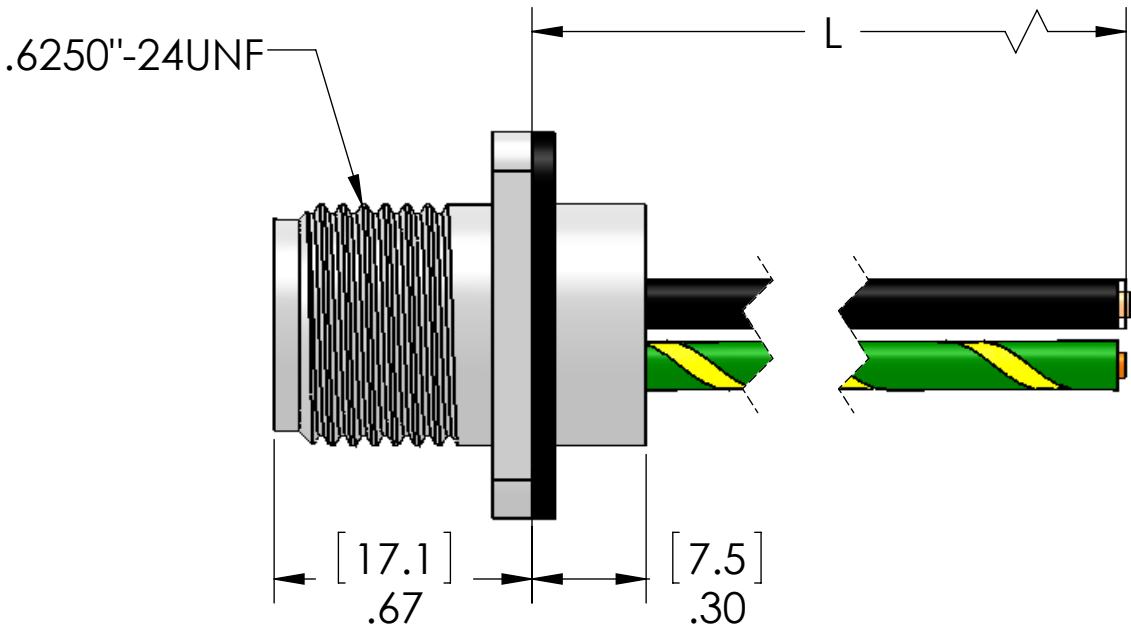
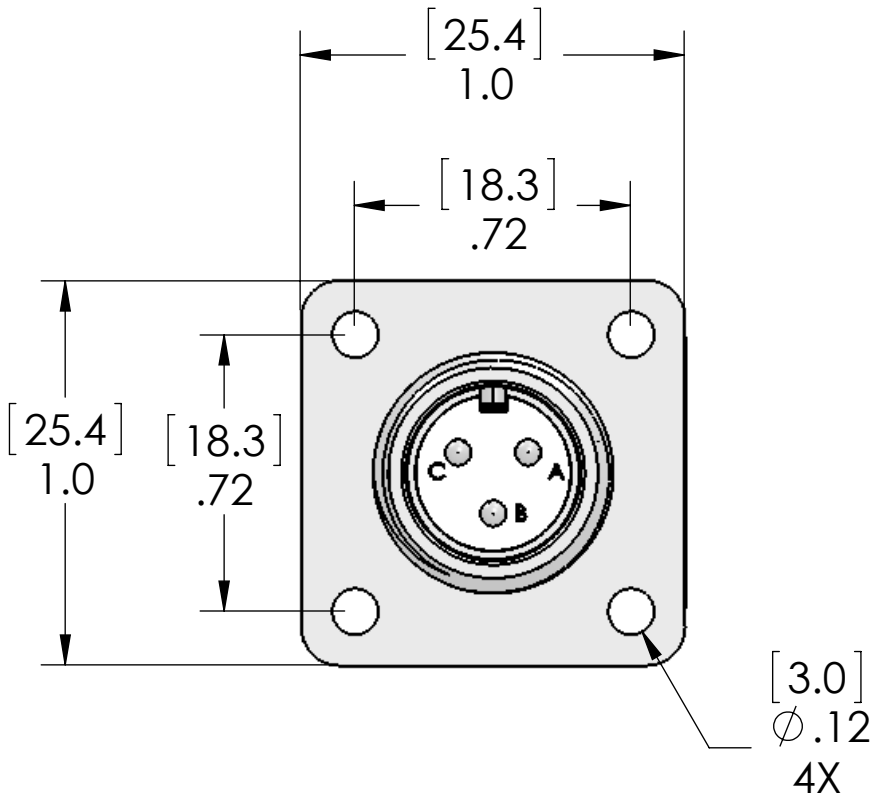


TABLE A	
P/N	L
MS10SL-3MR-0.3M-PM	12" [0.3M]
MS10SL-3MR-0.5M-PM	19" [0.5M]
MS10SL-3MR-1M-PM	40" [1M]
MS10SL-3MR-2M-PM	79" [2M]
MS10SL-3MR-5M-PM	197" [5M]
MS10SL-3MR-10M-PM	393" [10M]

MATERIALS	
SHELL:	NICKEL PLATED ZINC ALLOY
CONTACTS:	GOLD PLATED COPPER ALLOY
WIRES:	UL1015 16AWG
GASKET:	TPE

PROPRIETARY AND CONFIDENTIAL
THE INFORMATION CONTAINED IN THIS
DRAWING IS THE SOLE PROPERTY OF
MENCOM CORPORATION. ANY
REPRODUCTION IN PART OR AS A WHOLE
WITHOUT THE WRITTEN PERMISSION OF
MENCOM CORPORATION IS
PROHIBITED.

VOLTS	600V
AMPS	13A
TEMP	105C
APPLICATION	

UNLESS OTHERWISE SPECIFIED: DIMENSIONS ARE IN INCHES AND [MM]		NAME	JJH
	DRAWN		
	CHECKED		
	ENG APPR.		
	MFG APPR.		
INTERPRET GEOMETRIC TOLERANCING PER:	Q.A.		
	COMMENTS:		
MATERIAL			
FINISH			
DO NOT SCALE DRAWING			

MENCOM CORPORATION

TITLE:
3 PL ML PM RCP MS10SL

SIZE	DWG. NO.	REV
B	MS10SL-3MR-ZZ-PM	A
SCALE: 2:1		WEIGHT:
		SHEET 1 OF 1