

PIN #	COLOR
A	WHITE
B	BLACK

REVISIONS			
REV.	DESCRIPTION	DATE	APPROVED
X	PELIMINARY	1/8/2016	

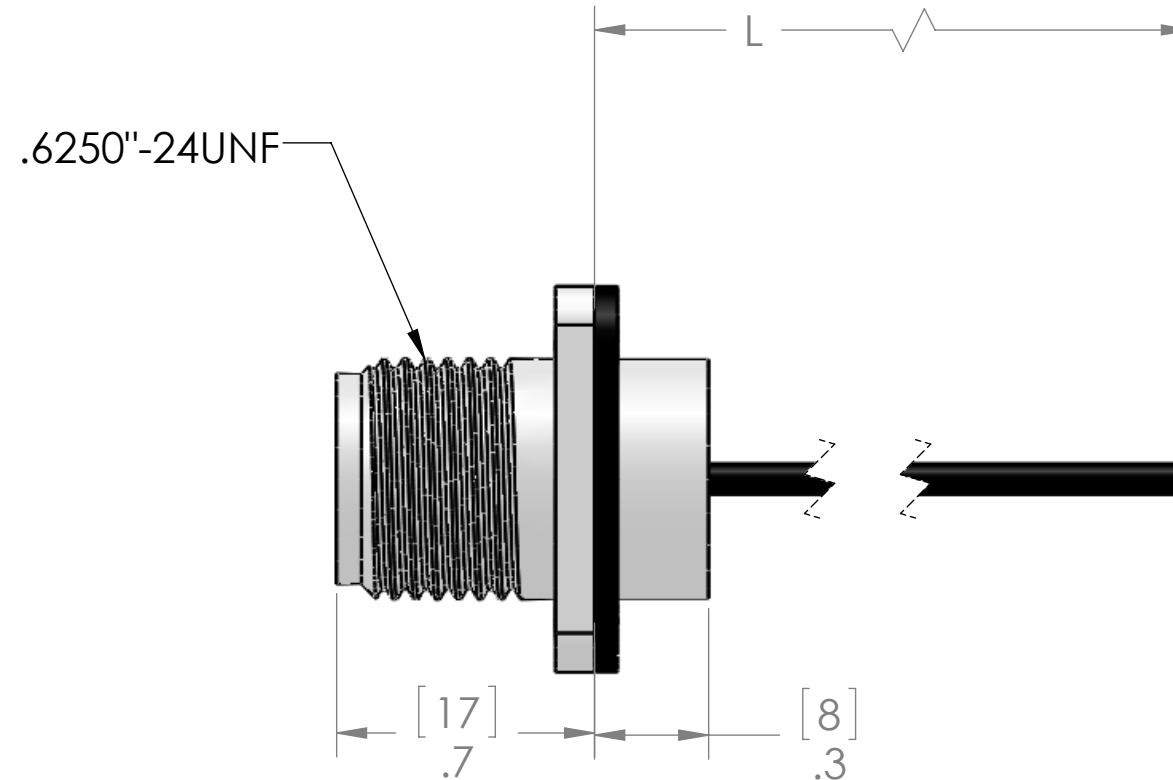
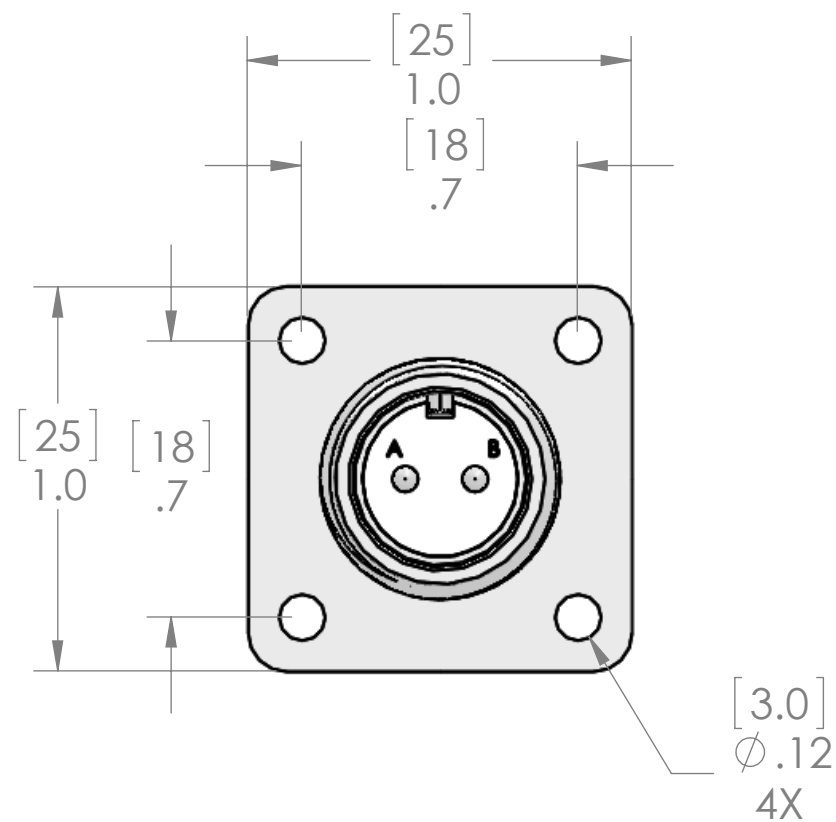


TABLE A	
P/N	L
MS10SL-2MR-0.3M-18-PM	12" [0.3M]
MS10SL-2MR-0.5M-18-PM	19" [0.5M]
MS10SL-2MR-1M-18-PM	40" [1M]
MS10SL-2MR-2M-18-PM	79" [2M]
MS10SL-2MR-5M-18-PM	197" [5M]
MS10SL-2MR-10M-18-PM	393" [10M]

MATERIALS	
SHELL:	NICKEL PLATED ZINC ALLOY
CONTACTS:	SILVER PLATED COPPER ALLOY
WIRES:	UL1007 18AWG
GASKET:	TPE

PROPRIETARY AND CONFIDENTIAL

THE INFORMATION CONTAINED IN THIS
DRAWING IS THE SOLE PROPERTY OF
MENCOM CORPORATION. ANY
REPRODUCTION IN PART OR AS A WHOLE
WITHOUT THE WRITTEN PERMISSION OF
MENCOM CORPORATION IS
PROHIBITED.

VOLTS	300V	INTERPRET GEOMETRIC TOLERANCING PER:
AMPS	TBD	MATERIAL
TEMP	105C	FINISH
APPLICATION		DO NOT SCALE DRAWING

UNLESS OTHERWISE SPECIFIED:		NAME		MENCOM CORPORATION			
DIMENSIONS ARE IN INCHES AND [MM]	DRAWN	JJH					
	CHECKED						
	ENG APPR.						
	MFG APPR.						
INTERPRET GEOMETRIC TOLERANCING PER:		Q.A.			TITLE: 2 PL ML PM RCP MS10SL 18AWG		
MATERIAL		COMMENTS:					
FINISH				SIZE	DWG. NO.	REV	
				B	MS10SL-2MR-ZZ-18-PM	X	
DO NOT SCALE DRAWING				SCALE: 2:1		WEIGHT:	SHEET 1 OF 1