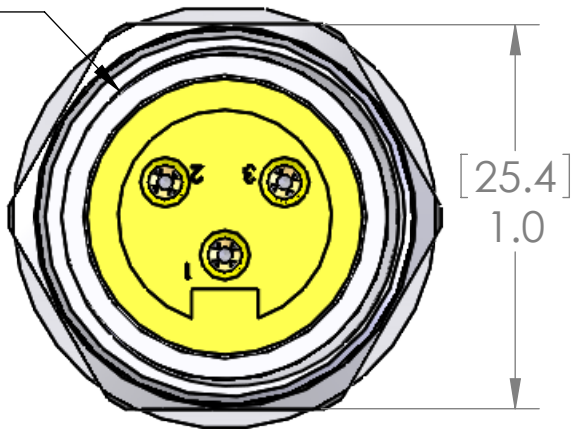


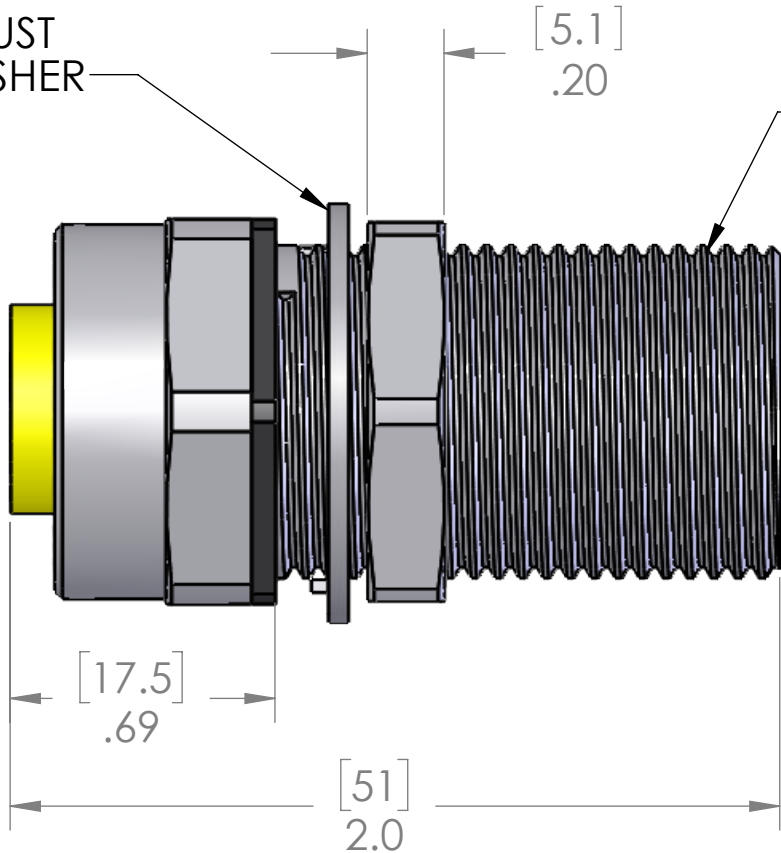
WIRING		
MALE		FEMALE
PIN #1	-----	PIN #1
PIN #2	-----	PIN #2
PIN #3	-----	PIN #3

7/8-16 UN2B
FEMALE
THREAD



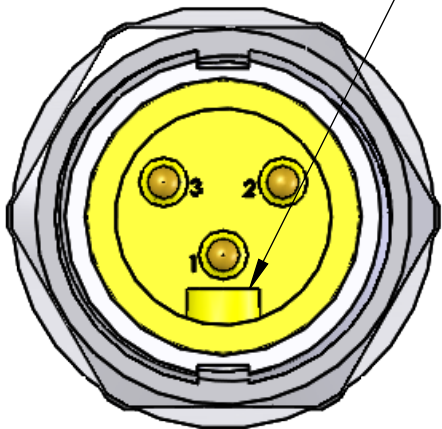
FEMALE

THRUST
WASHER

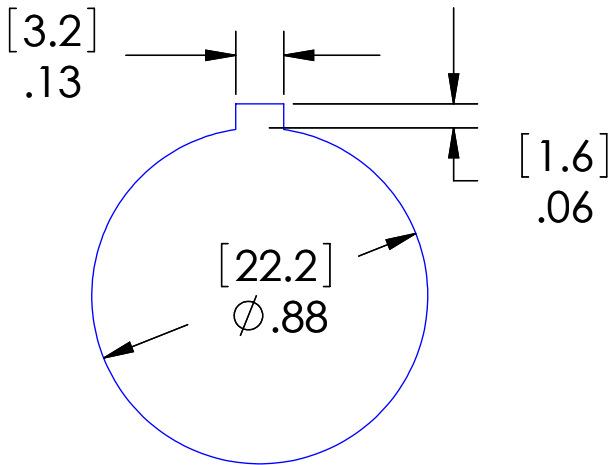


7/8-16 UN2A

KEYWAY
IN LINE
WITH SLOT



MALE



CUTOUT

MATERIALS	
SHELL:	NICKEL PLATED BRASS
CONTACTS:	GOLD PLATED COPPER ALLOY
INSERT:	YELLOW PVC
O-RING:	NBR
NUT:	NICKEL PLATED BRASS
APPROVALS	
US:	UL LISTED
CANADA:	C-UL LISTED
ROHS:	YES
CE:	YES
RATINGS	
PROTECTION CLASS:	UL TYPE 4 & 12, IEC IP69

PROPRIETARY AND CONFIDENTIAL
THE INFORMATION CONTAINED IN THIS
DRAWING IS THE SOLE PROPERTY OF
MENCOM CORPORATION. ANY
REPRODUCTION IN PART OR AS A WHOLE
WITHOUT THE WRITTEN PERMISSION OF
MENCOM CORPORATION IS
PROHIBITED.

VOLTS	600V
AMPS	13A
TEMP:	105°C

UNLESS OTHERWISE SPECIFIED:	DRAWN BY	
DIMENSIONS ARE IN INCHES AND [MM]	DRAWN DATE	10/31/2023
	CHECKED BY	JJH
	CHECK DATE	11/01/2023
MATERIAL	COMMENTS:	
FINISH		
DO NOT SCALE DRAWING		

MENCOM CORPORATION		
TITLE:		
3 POLE THROUGH MOUNT		
SIZE	DWG. NO.	REV
B	MIN-3MFRF-TM	B
SCALE: 2:1	WEIGHT:	SHEET 1 OF 1