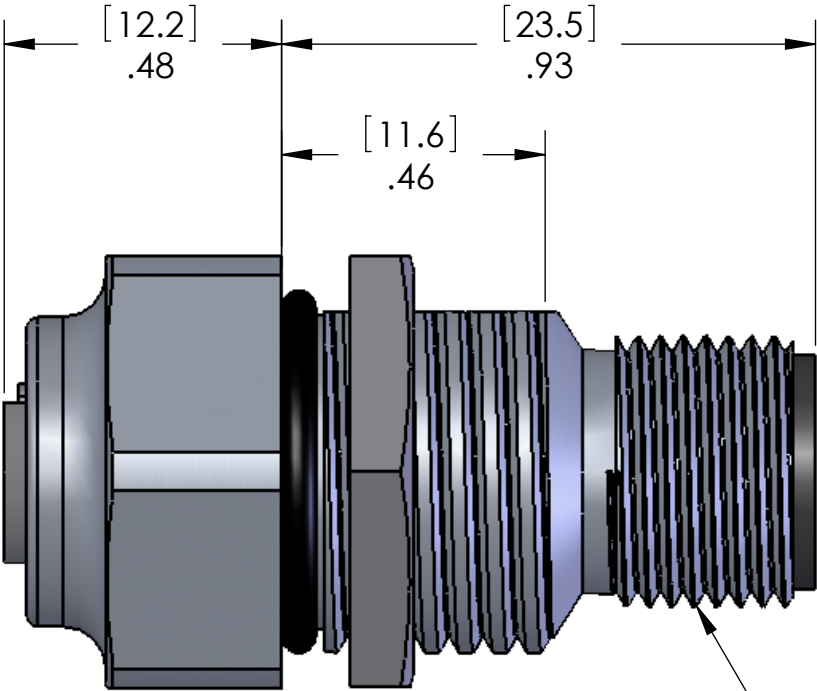
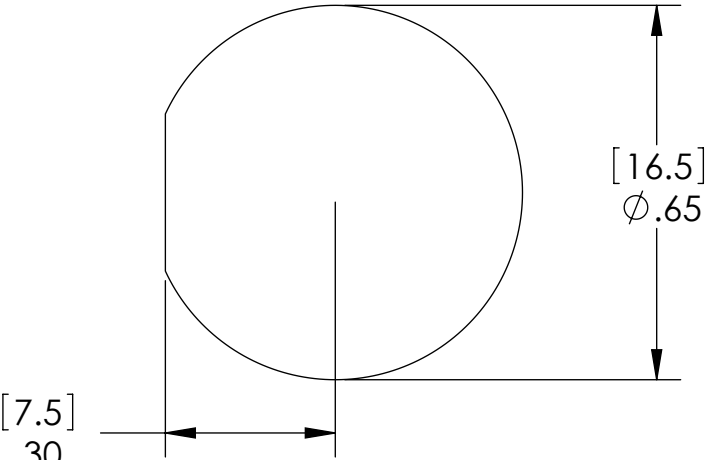


REVISIONS			
REV.	DESCRIPTION	DATE	APPROVED
A	REDRAWN IN SW	10/10/2007	



SUGGESTED MOUNTING HOLE



MATERIALS:	
BODY:	CLEAR ANODIZED ALUMINUM
INSERTS:	POLYAMIDE
CONTACTS:	GOLD PLATED COPPER ALLOY
O-RINGS:	NBR
JAM-NUT:	NICKEL PLATED BRASS

PROPRIETARY AND CONFIDENTIAL
THE INFORMATION CONTAINED IN THIS
DRAWING IS THE SOLE PROPERTY OF
MENCOM CORPORATION. ANY
REPRODUCTION IN PART OR AS A WHOLE
WITHOUT THE WRITTEN PERMISSION OF
MENCOM CORPORATION IS
PROHIBITED.

VOLTS	300V
AMPS	4A
TEMP	105°C
SPECIFICATIONS	

UNLESS OTHERWISE SPECIFIED:
DIMENSIONS ARE IN INCHES AND [MM]
MATERIAL
FINISH
DO NOT SCALE DRAWING

DRAWN	NAME	DATE
CHECKED	BEM	
ENG APPR.		
MFG APPR.		
Q.A.		
COMMENTS:		

MENCOM CORPORATION		
TITLE:		
SIZE	DWG. NO.	REV
B	MEC-5MFR-TM	A
SCALE: 3:1	WEIGHT:	SHEET 1 OF 1