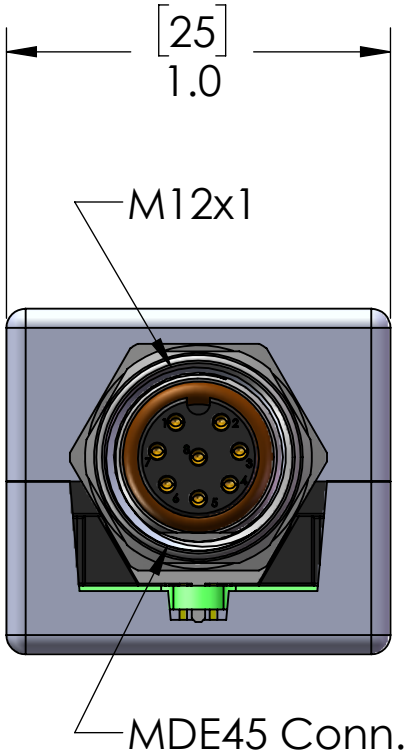
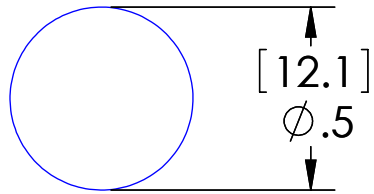
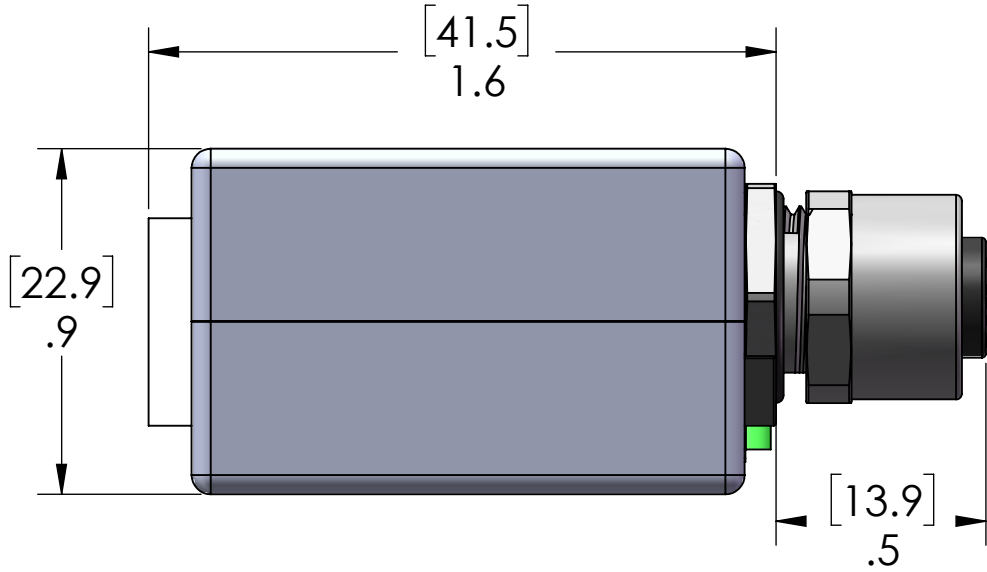
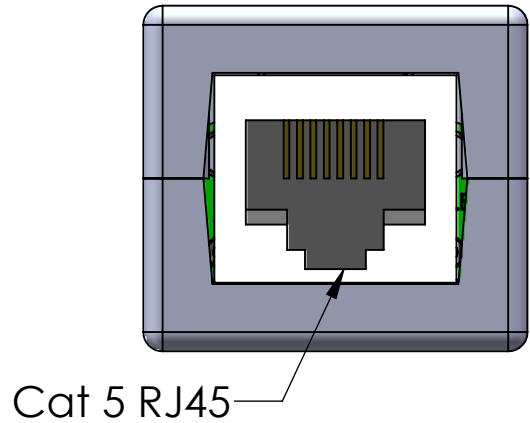


| WIRING | | |
|--------|----------|-------|
| RJ45 | FUNCTION | MDE45 |
| 1 | WHT/BLU | 5 |
| 2 | WHT/BRW | 7 |
| 3 | BROWN | 8 |
| 4 | ORANGE | 2 |
| 5 | WHT/GRN | 3 |
| 6 | WHT/ORG | 1 |
| 7 | BLUE | 4 |
| 8 | GREEN | 6 |
| SHIELD | ----- | SHELL |



Note: The shield of the RJ45 connector is electrically connected to the shell of the MDE45 Connector. If this connection is not desired, consult factory for the part number for one that is not connected.

Panel Cut-Out

Maximum panel thickness: 0.12" [3]

| | |
|-------------|--------------------------|
| MATERIALS: | |
| HOUSING: | PBT |
| MDE45 CPLG: | NICKEL PLATED BRASS |
| RJ45: | CAT 5e |
| CONTACTS: | GOLD PLATED COPPER ALLOY |

PROPRIETARY AND CONFIDENTIAL
THE INFORMATION CONTAINED IN THIS DRAWING IS THE SOLE PROPERTY OF MENCOM CORPORATION. ANY REPRODUCTION IN PART OR AS A WHOLE WITHOUT THE WRITTEN PERMISSION OF MENCOM CORPORATION IS PROHIBITED.

| | |
|-------|-------|
| VOLTS | 42VDC |
| AMPS | 1.5A |
| TEMP: | 80°C |

| | | |
|---|------------|------------|
| UNLESS OTHERWISE SPECIFIED: DIMENSIONS ARE IN INCHES AND [MM] | DRAWN BY | JJH |
| | DRAWN DATE | 12/06/2018 |
| | CHECKED BY | ADM |
| | CHECK DATE | 08/12/2019 |
| | | |
| | | |
| MATERIAL | COMMENTS: | |
| FINISH | | |
| DO NOT SCALE DRAWING | | |

| | | |
|--------------------|-----------------|--------------|
| MENCOM CORPORATION | | |
| TITLE: | | |
| SIZE | DWG. NO. | REV |
| B | MDE45RJ-8FFR-BM | B |
| SCALE: 2:1 | WEIGHT: | SHEET 1 OF 1 |