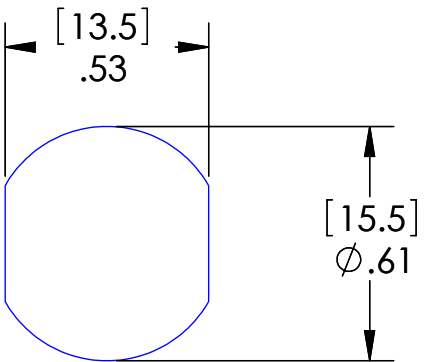
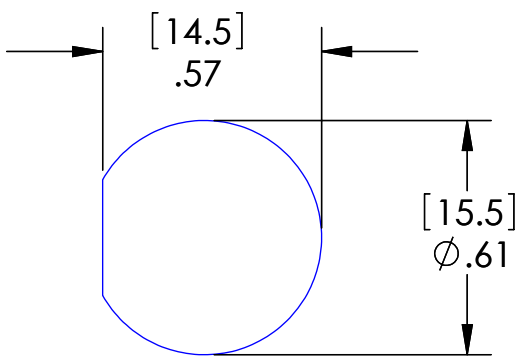
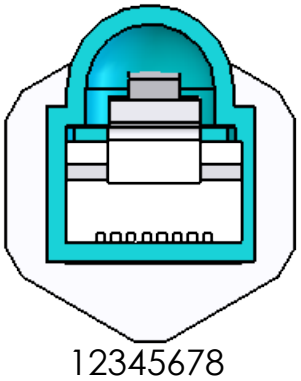
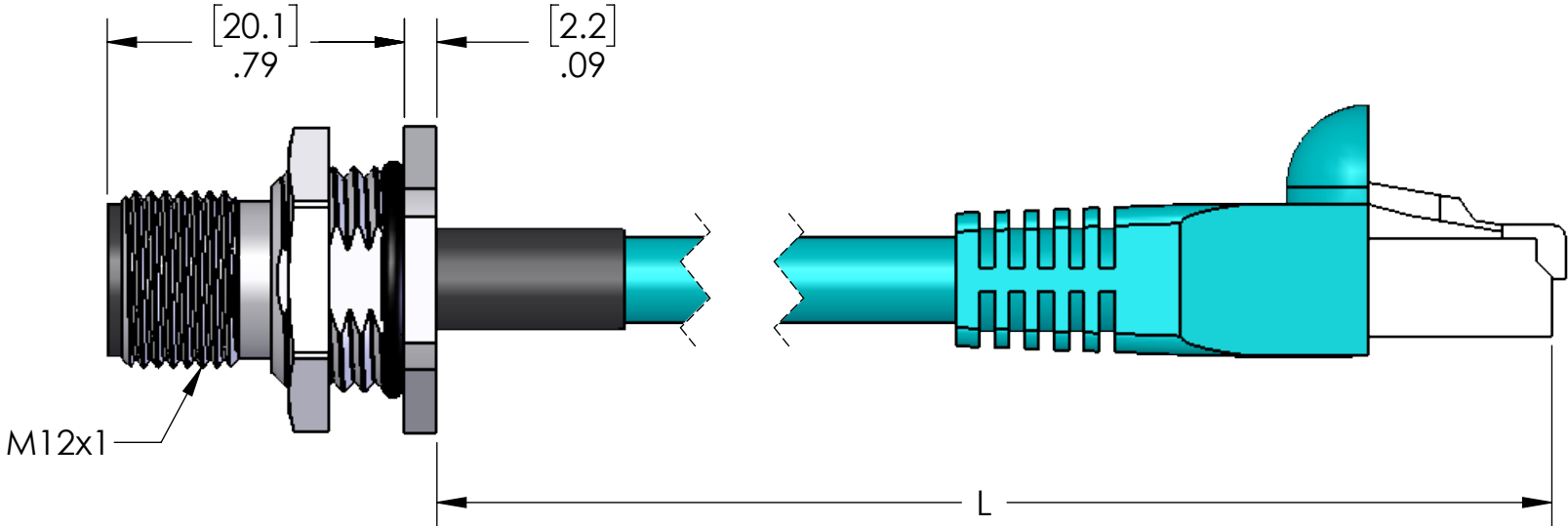
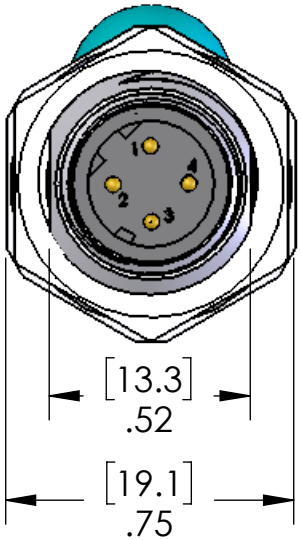


MDE45	FUNCTION	RJ45
PIN #		PIN #
1	TX+	1
2	RX+	3
3	TX-	2
4	RX-	6



PANEL
CUTOUT
OPTIONS

TABLE A	
P/N	L
MDE45-4MR-RJ45-BM	12" [0.3m]
MDE45-4MR-RJ45-BM-0.5M	19" [0.5m]
MDE45-4MR-RJ45-BM-1M	40" [1m]
MDE45-4MR-RJ45-BM-2M	79" [2m]
MDE45-4MR-RJ45-BM-3M	118" [3m]
MDE45-4MR-RJ45-BM-4M	157" [4m]
MDE45-4MR-RJ45-BM-5M	197" [5m]
MDE45-4MR-RJ45-BM-10M	393" [10m]

OTHER LENGTHS AVAILABLE,
PLEASE CONSULT FACTORY

MATERIALS	
BODY:	NICKEL PLATED BRASS
INSERT:	POLYAMIDE
CONTACTS:	GOLD PLATED COPPER ALLOY
CABLE:	CAT 5E WITH TEAL PVC JACKET
O-RING:	BUNA-N
JAM NUT:	NICKEL PLATED BRASS

PROPRIETARY AND CONFIDENTIAL
THE INFORMATION CONTAINED IN THIS
DRAWING IS THE SOLE PROPERTY OF
MENCOM CORPORATION. ANY
REPRODUCTION IN PART OR AS A WHOLE
WITHOUT THE WRITTEN PERMISSION OF
MENCOM CORPORATION IS
PROHIBITED.

VOLTS	42V
AMPS	1.5A
TEMP:	60°C

UNLESS OTHERWISE SPECIFIED:	DRAWN BY	ADM
DIMENSIONS ARE IN INCHES AND [MM]	DRAWN DATE	09/22/2016
	CHECKED BY	
	CHECK DATE	
MATERIAL	COMMENTS:	
FINISH		
DO NOT SCALE DRAWING		

MENCOM CORPORATION			
TITLE:			
SIZE	DWG. NO.		REV
B	MDE45-4MR-RJ45-BM-ZZ		B
SCALE: 2:1	WEIGHT:		SHEET 1 OF 1