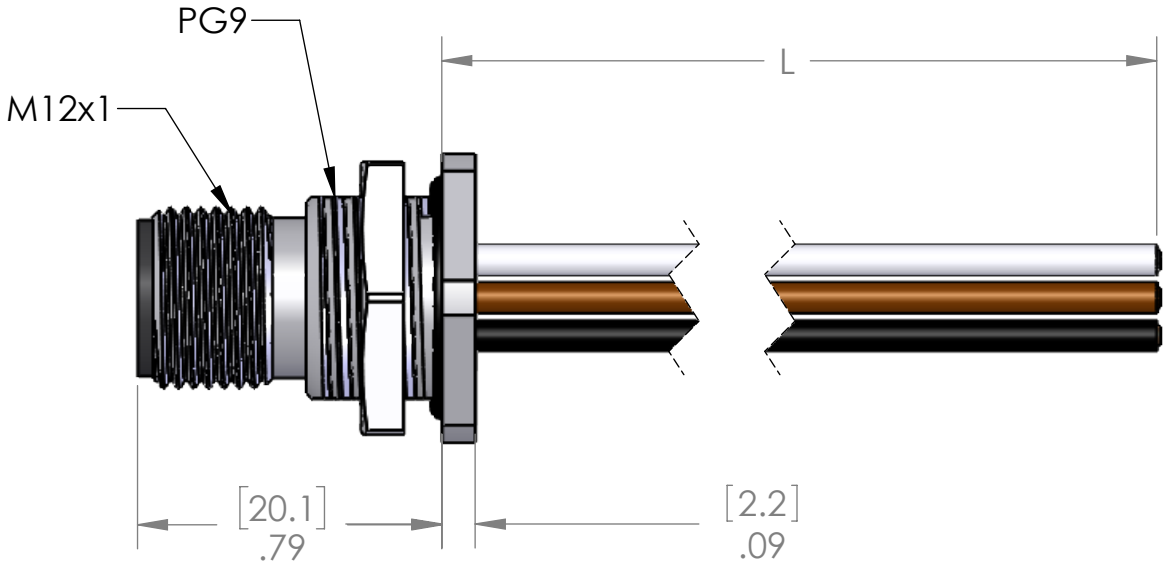
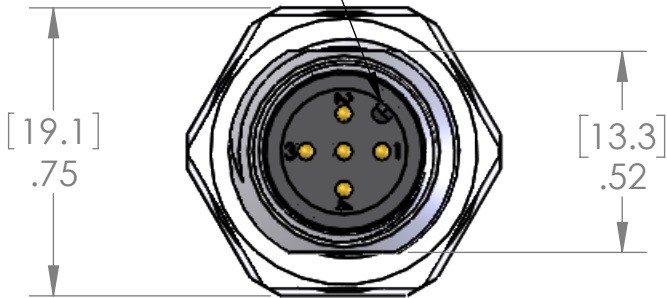
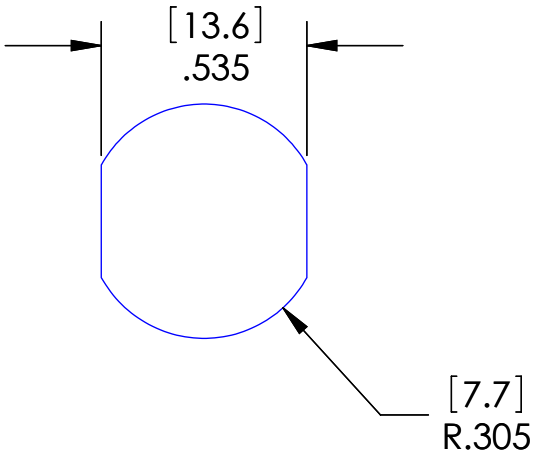


PIN #	COLOR
1	BROWN
2	WHITE
3	BLUE
4	BLACK
5	GRAY

KEYWAY IS ORIENTED
AS SHOWN RELATIVE
TO FLATS ON SHELL.



MOUNTING HOLE



MATERIALS	
SHELL:	NICKEL PLATED BRASS
CONTACTS:	GOLD PLATED COPPER ALLOY
WIRES:	
STYLE:	UL 1007/1569
AWG:	18 AWG
JACKET:	PVC
VOLTAGE:	300V
INSERT:	POLYAMIDE
O-RING:	NBR
NUT:	NICKEL PLATED BRASS
APPROVALS	
US:	UL LISTED
CANADA:	C-UL LISTED
ROHS:	YES
CE & UKCA:	YES
RATINGS	
PROTECTION CLASS:	UL TYPE 4 & 12, IEC IP69

PROPRIETARY AND CONFIDENTIAL
THE INFORMATION CONTAINED IN THIS
DRAWING IS THE SOLE PROPERTY OF
MENCOM CORPORATION. ANY
REPRODUCTION IN PART OR AS A WHOLE
WITHOUT THE WRITTEN PERMISSION OF
MENCOM CORPORATION IS
PROHIBITED.

VOLTS	300V
AMPS	4A
TEMP:	105°C

UNLESS OTHERWISE SPECIFIED:		DRAWN BY	ADM
DIMENSIONS ARE IN INCHES AND [MM]		DRAWN DATE	07/10/2023
		CHECKED BY	JJH
		CHECK DATE	07/11/2023
	COMMENTS:		
MATERIAL			
FINISH			
DO NOT SCALE DRAWING			

P/N	L
MDC-5MR-BM-18	12" [0.3M]
MDC-5MR-BM-0.5M-18	20" [0.5M]
MDC-5MR-BM-0.6M-18	24" [0.6M]
MDC-5MR-BM-1M-18	40" [1M]
MDC-5MR-BM-2M-18	79" [2M]
MDC-5MR-BM-5M-18	197" [5M]
MDC-5MR-BM-10M-18	393" [10M]

OTHER LENGTHS AVAILABLE
PLEASE CONSULT FACTORY

MENCOM CORPORATION		
TITLE:		
SIZE	DWG. NO.	REV
B	MDC-5MR-BM-ZZ-18	D
SCALE: 2:1	WEIGHT:	SHEET 1 OF 1