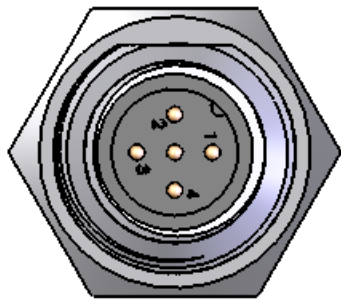
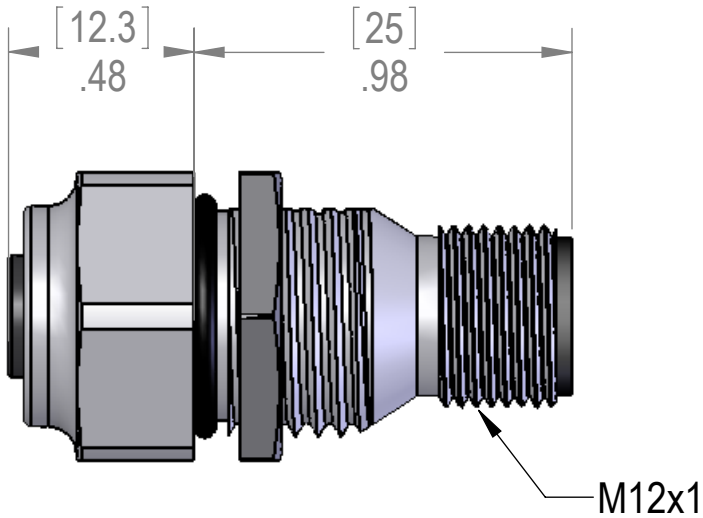
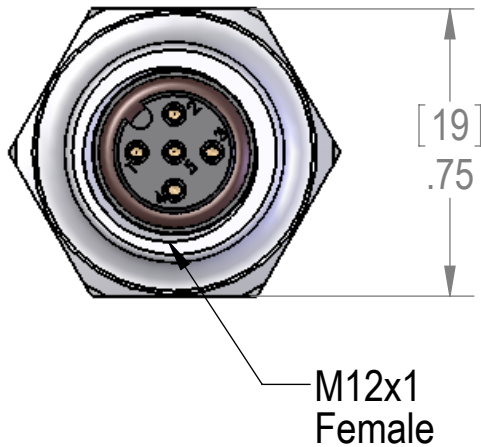
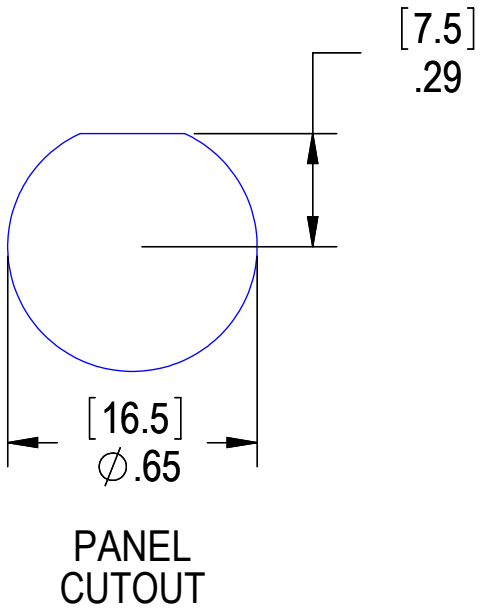


WIRING		
1	-----	1
2	-----	2
3	-----	3
4	-----	4
5	-----	5

REVISIONS			
REV.	DESCRIPTION	DATE	APPROVED
A	REDRAWN IN SW	10/10/2007	
B	CHANGED SHELL MATERIAL	8/23/2014	JJH



MATERIALS:	
BODY:	NICKEL PLATED BRASS
INSERTS:	POLYAMIDE
CONTACTS:	GOLD PLATED COPPER ALLOY
O-RINGS:	FPM
LOCK-NUT:	NICKEL PLATED BRASS

**PROPRIETARY AND CONFIDENTIAL**  
THE INFORMATION CONTAINED IN THIS DRAWING IS THE SOLE PROPERTY OF MENCOM CORPORATION. ANY REPRODUCTION IN PART OR AS A WHOLE WITHOUT THE WRITTEN PERMISSION OF MENCOM CORPORATION IS PROHIBITED.

VOLTS	300V
AMPS	4A
TEMP	105°C

SPECIFICATIONS

UNLESS OTHERWISE SPECIFIED:		NAME	DATE	MENCOM CORPORATION	
DIMENSIONS ARE IN INCHES AND [MM]	DRAWN	BEM			
	CHECKED				
	ENG APPR.				
	MFG APPR.				
MATERIAL	Q.A.			TITLE: 5 POL M-F THRU MT RECP.	
	COMMENTS:				
FINISH				SIZE <b>B</b>	DWG. NO. MDC-5MFR-TM
DO NOT SCALE DRAWING				REV <b>B</b>	
		SCALE: 2:1	WEIGHT:	SHEET 1 OF 1	