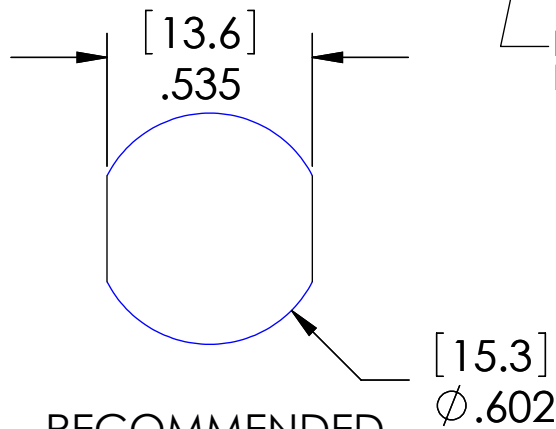
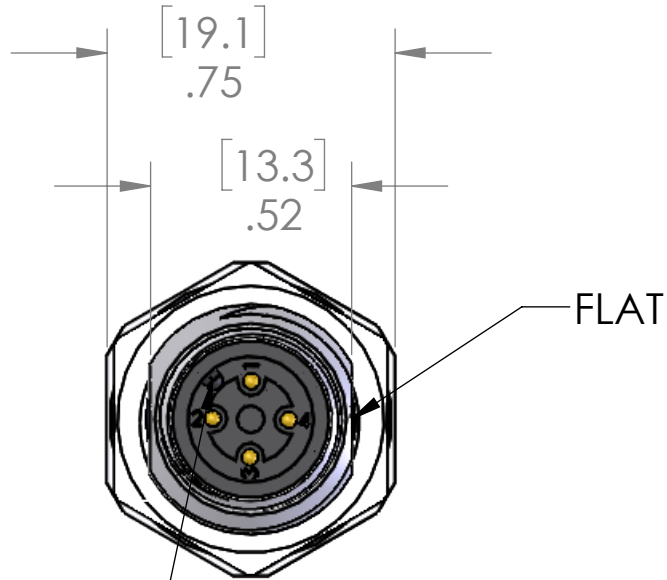
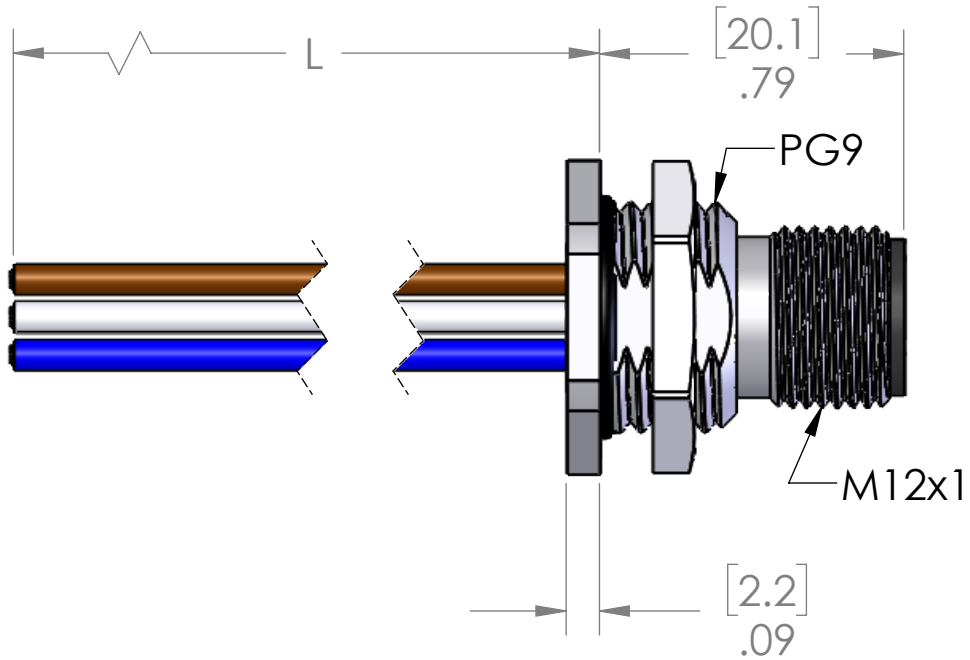


PIN #	COLOR
1	BROWN
2	WHITE
3	BLUE
4	BLACK



MAX PANEL THICKNESS 3.5mm

MATERIALS	
SHELL:	NICKEL PLATED BRASS
CONTACTS:	GOLD PLATED COPPER ALLOY
WIRES:	
STYLE:	UL 1007 / 1569
AWG:	18 AWG
JACKET:	PVC
VOLTAGE:	300V
INSERT:	POLYAMIDE
O-RING:	N/A
NUT:	NICKEL PLATED BRASS
APPROVALS	
US:	UL LISTED
CANADA:	C-UL LISTED
ROHS:	YES
CE & UKCA:	YES
RATINGS	
PROTECTION CLASS:	UL TYPE 4 & 12, IEC IP69

PROPRIETARY AND CONFIDENTIAL
THE INFORMATION CONTAINED IN THIS DRAWING IS THE SOLE PROPERTY OF MENCOM CORPORATION. ANY REPRODUCTION IN PART OR AS A WHOLE WITHOUT THE WRITTEN PERMISSION OF MENCOM CORPORATION IS PROHIBITED.

VOLTS	300V
AMPS	4A
TEMP:	105°C

UNLESS OTHERWISE SPECIFIED:	DRAWN BY	ADM
DIMENSIONS ARE IN INCHES AND [MM]	DRAWN DATE	07/20/2023
	CHECKED BY	JJH
	CHECK DATE	07/24/2023
	COMMENTS:	
MATERIAL		
FINISH		
DO NOT SCALE DRAWING		

P/N	L
MDC-4MR-BM-18	12" [0.3m]
MDC-4MR-BM-0.5M-18	20" [0.5m]
MDC-4MR-BM-0.6M-18	24" [0.6m]
MDC-4MR-BM-1M-18	40" [1m]
MDC-4MR-BM-2M-18	79" [2m]
MDC-4MR-BM-3M-18	118" [3m]
MDC-4MR-BM-4M-18	157" [4m]
MDC-4MR-BM-5M-18	197" [5m]
MDC-4MR-BM-10M-18	393" [10m]

OTHER LENGTHS ARE AVAILABLE
PLEASE CONSULT FACTORY

MENCOM CORPORATION

TITLE:
4 PL MDC BK MT ML RECP

SIZE	DWG. NO.	REV
B	MDC-4MR-BM-ZZ-18	B

SCALE: 2:1 WEIGHT: SHEET 1 OF 1