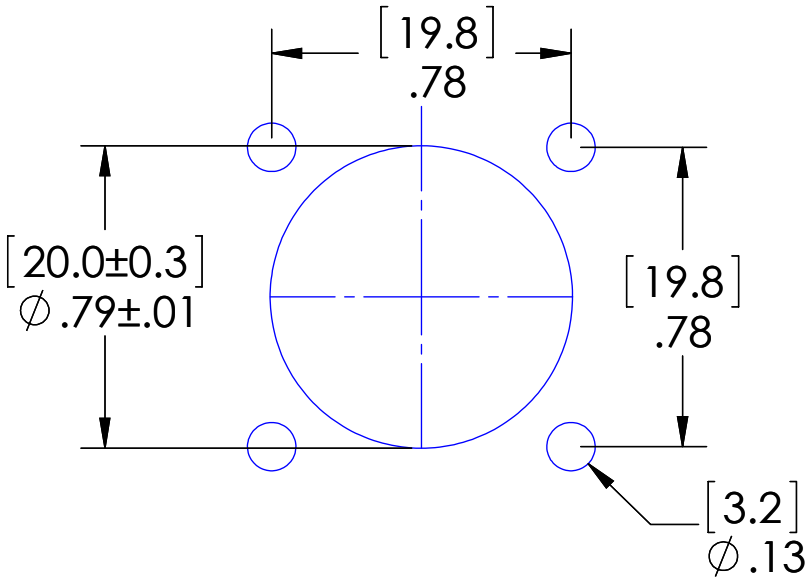
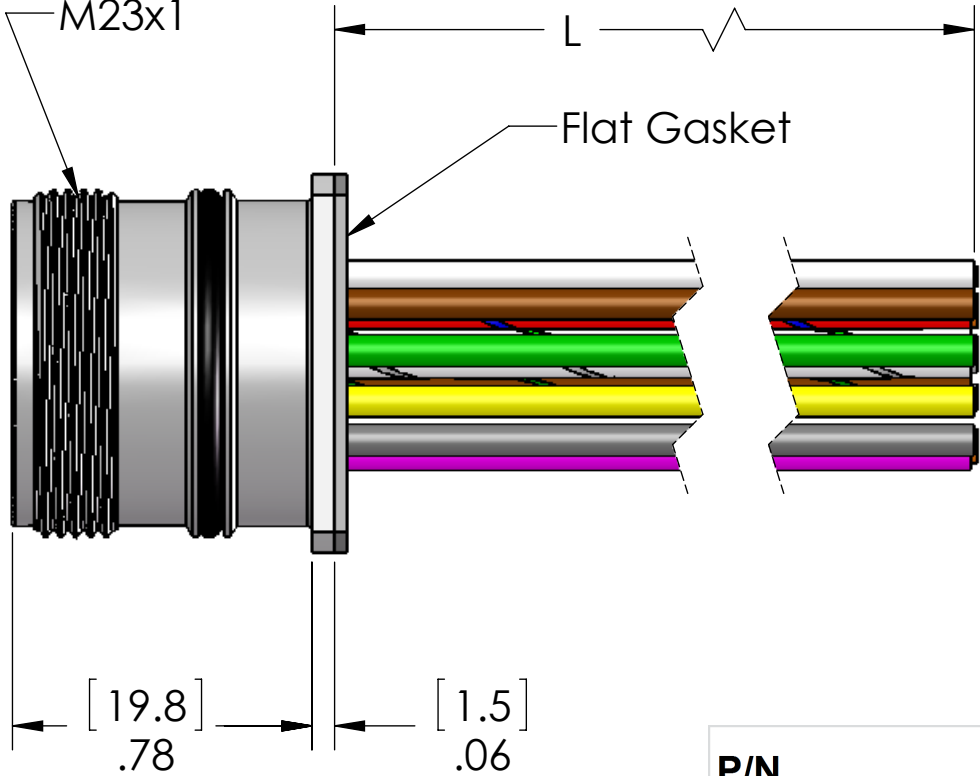
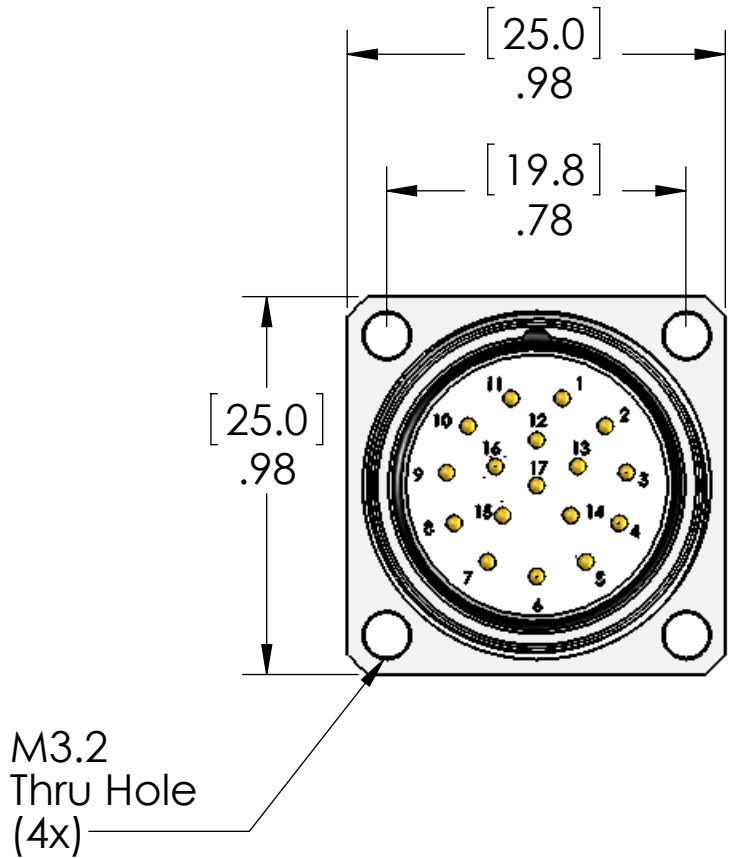


PIN #	COLOR
1	WHITE
2	BROWN
3	GREEN
4	YELLOW
5	GRAY
6	PINK
7	BLUE
8	RED
9	BLACK
10	VIOLET
11	GRAY w/PINK
12	RED w/BLUE
13	WHITE w/GREEN
14	BROWN w/GREEN
15	WHITE w/YELLOW
16	YELLOW w/BROWN
17	WHITE w/GRAY

REVISIONS			
REV.	DESCRIPTION	DATE	APPROVED
A	REDRAWN IN SW	2/14/2014	RSC
B	UPDATED COLOR CODES	6/6/2016	BEM
C	UPDATED RATINGS	6/28/2016	JJH



P/N	L
MCV-17MR-0.3M-PM32	12" [0.3m]
MCV-17MR-0.5M-PM32	19" [0.5m]
MCV-17MR-1M-PM32	40" [1m]
MCV-17MR-2M-PM32	79" [2m]
MCV-17MR-3M-PM32	118" [3m]
MCV-17MR-5M-PM32	197" [5m]
MCV-17MR-10M-PM32	393" [10m]

MATERIALS:	
SHELL:	NICKEL PLATED BRASS
INSERT:	PBT
CONTACTS:	GOLD PLATED COPPER ALLOY
LOCKNUT:	NICKEL PLATED BRASS
O-RINGS:	NBR or FPM
WIRE:	18AWG UL1007/1569

PROPRIETARY AND CONFIDENTIAL
THE INFORMATION CONTAINED IN THIS DRAWING IS THE SOLE PROPERTY OF MENCOM CORPORATION. ANY REPRODUCTION IN PART OR AS A WHOLE WITHOUT THE WRITTEN PERMISSION OF MENCOM CORPORATION IS PROHIBITED.

VOLTS	150V
AMPS	5A
TEMP	-40 TO 105C
APPLICATION	

UNLESS OTHERWISE SPECIFIED:	
DIMENSIONS ARE IN INCHES AND [MM]	
INTERPRET GEOMETRIC TOLERANCING PER:	
MATERIAL	
FINISH	
DO NOT SCALE DRAWING	

NAME	JJH
DRAWN	
CHECKED	
ENG APPR.	
MFG APPR.	
Q.A.	
COMMENTS:	

MENCOM CORPORATION

TITLE:

SIZE	DWG. NO.	REV
B	MCV-17MR-ZZ-PM32	C

SCALE: 2:1	WEIGHT:	SHEET 1 OF 1
------------	---------	--------------