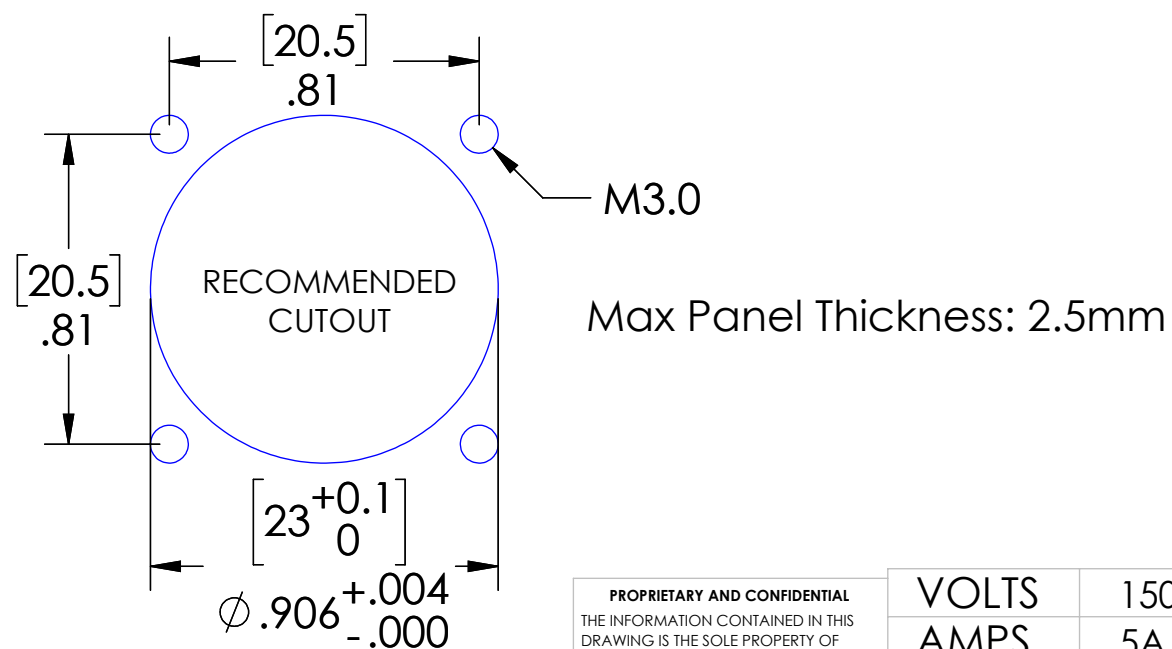
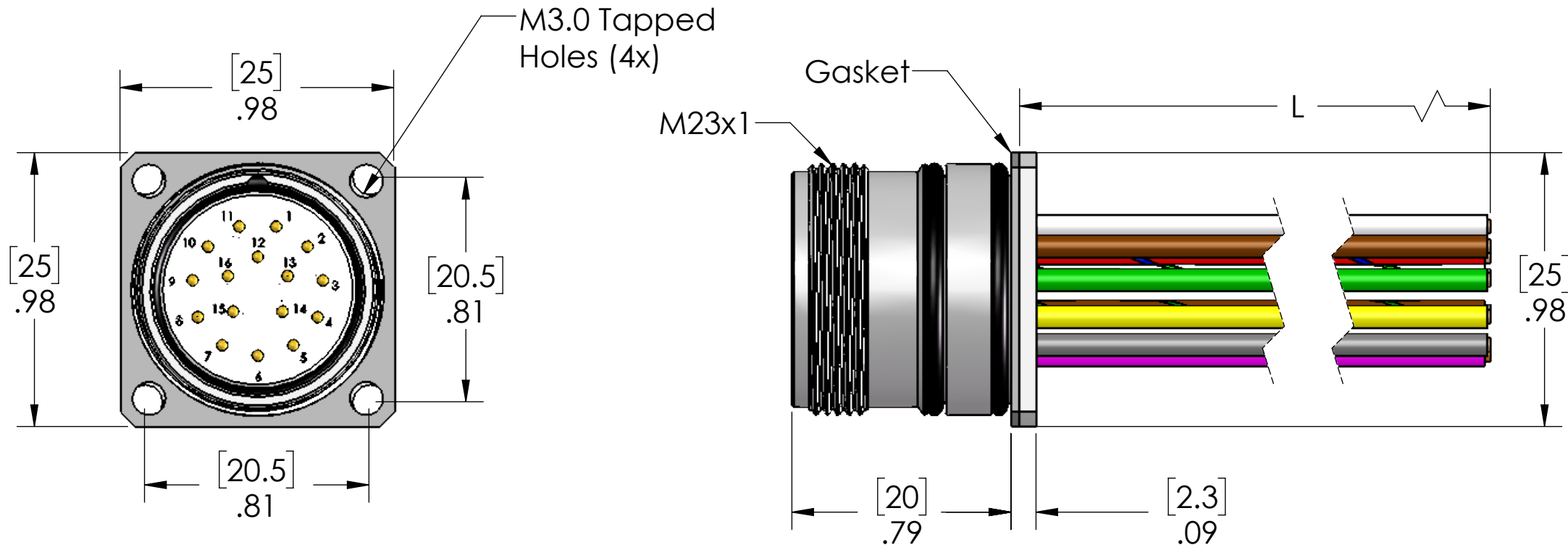


PIN #	COLOR	PIN #	COLOR
1	WHITE	9	BLACK
2	BROWN	10	VIOLET
3	GREEN	11	GRAY w/PINK
4	YELLOW	12	RED w/BLUE
5	GRAY	13	WHITE w/GREEN
6	PINK	14	BROWN w/GREEN
7	BLUE	15	WHITE w/YELLOW
8	RED	16	YELLOW w/BROWN



P/N	L
MCV-16MR-0.3M-RM30	12" [0.3m]
MCV-16MR-0.5M-RM30	20" [0.5m]
MCV-16MR-1M-RM30	40" [1m]
MCV-16MR-2M-RM30	79" [2m]
MCV-16MR-3M-RM30	118" [3m]
MCV-16MR-5M-RM30	179" [5m]

MATERIALS:	
BODY:	NICKEL PLATED BRASS
CONTACTS:	GOLD PLATED COPPER ALLOY
O-RINGS:	NBR
LOCKNUT:	NICKEL PLATED BRASS
WIRE:	18AWG UL1007/1569

PROPRIETARY AND CONFIDENTIAL
 THE INFORMATION CONTAINED IN THIS DRAWING IS THE SOLE PROPERTY OF MENCOM CORPORATION. ANY REPRODUCTION IN PART OR AS A WHOLE WITHOUT THE WRITTEN PERMISSION OF MENCOM CORPORATION IS PROHIBITED.

VOLTS	150
AMPS	5A
TEMP:	-40 TO 105C

UNLESS OTHERWISE SPECIFIED:	DRAWN BY	ADM
DIMENSIONS ARE IN INCHES AND [MM]	DRAWN DATE	05/03/2018
	CHECKED BY	JJH
	CHECK DATE	05/03/2018
COMMENTS:		
DO NOT SCALE DRAWING		

MENCOM CORPORATION		
TITLE: 16PL M23 REAR MT ML RCPT		
SIZE	DWG. NO.	REV
B	MCV-16MR-ZZ-RM30	A
SCALE: 2:1	WEIGHT:	SHEET 1 OF 1