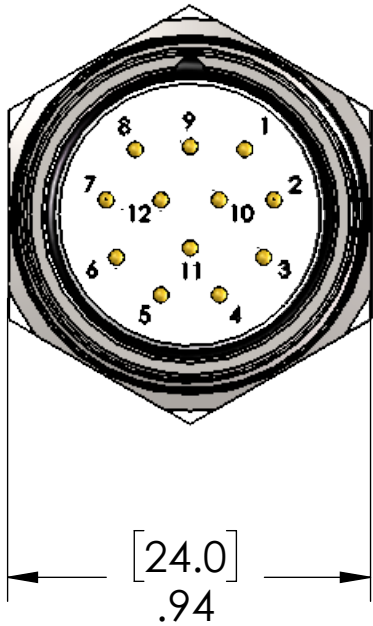
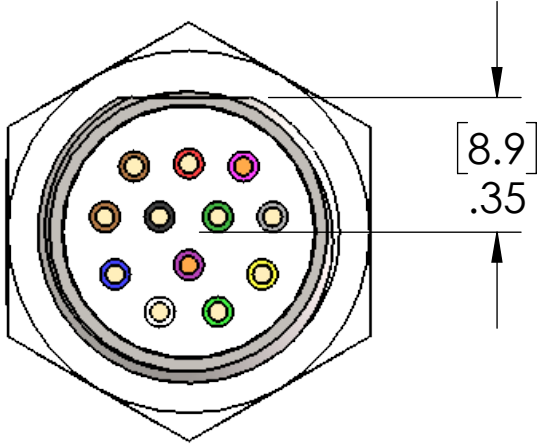
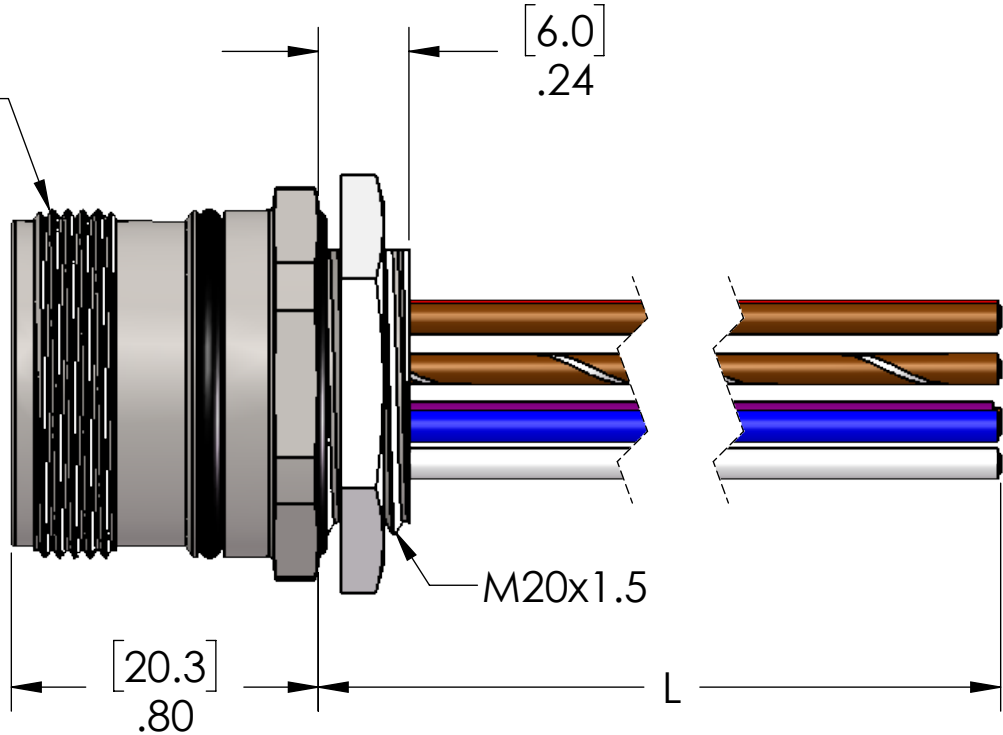


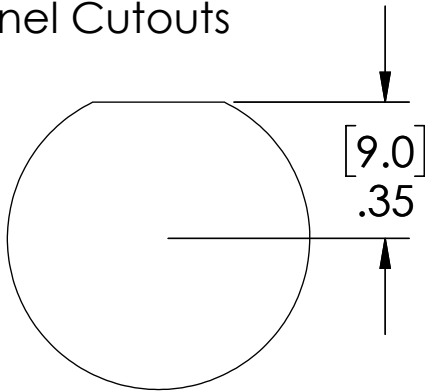
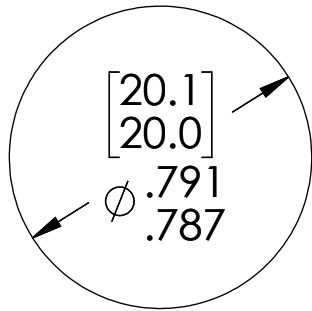
PIN #	COLOR
1	BROWN
2	BROWN/WHITE
3	BLUE
4	WHITE
5	GREEN
6	YELLOW
7	GRAY
8	PINK
9	RED
10	BLACK
11	VIOLET
12	GREEN w/YELLOW



M23x1
MALE THREAD



Recommended Panel Cutouts



(Anti-Rotational)

MATERIALS:	
SHELL:	STAINLESS STEEL
INSERT:	PBT
CONTACTS:	GOLD PLATED COPPER ALLOY
LOCKNUT:	NICKEL PLATED BRASS
O-RINGS:	NBR
WIRE:	18AWG UL1007/1569
APPROVALS:	
US:	UL LISTED
CANADA:	C-UL LISTED

PROPRIETARY AND CONFIDENTIAL
THE INFORMATION CONTAINED IN THIS
DRAWING IS THE SOLE PROPERTY OF
MENCOM CORPORATION. ANY
REPRODUCTION IN PART OR AS A WHOLE
WITHOUT THE WRITTEN PERMISSION OF
MENCOM CORPORATION IS
PROHIBITED.

VOLTS	300V
AMPS	6A
TEMP:	105°C

UNLESS OTHERWISE SPECIFIED:	DRAWN BY	ADM
DIMENSIONS ARE IN INCHES AND [MM]	DRAWN DATE	09/22/2016
	CHECKED BY	
	CHECK DATE	
MATERIAL	COMMENTS:	
FINISH		
DO NOT SCALE DRAWING		

PART NUMBER	L
MCV-12MR-0.3M-M20-SS	12" [0.3m]
MCV-12MR-0.5M-M20-SS	20" [0.5m]
MCV-12MR-1M-M20-SS	39" [1m]
MCV-12MR-2M-M20-SS	79" [2m]
MCV-12MR-3M-M20-SS	79" [2m]
MCV-12MR-4M-M20-SS	79" [2m]
MCV-12MR-5M-M20-SS	197" [5m]
MCV-12MR-6M-M20-SS	236" [6m]
MCV-12MR-10M-M20-SS	393" [10m]

MENCOM CORPORATION		
TITLE:		
SIZE	DWG. NO.	REV
B	MCV-12MR-ZZ-M20-SS	A
SCALE: 2:1	WEIGHT:	SHEET 1 OF 1