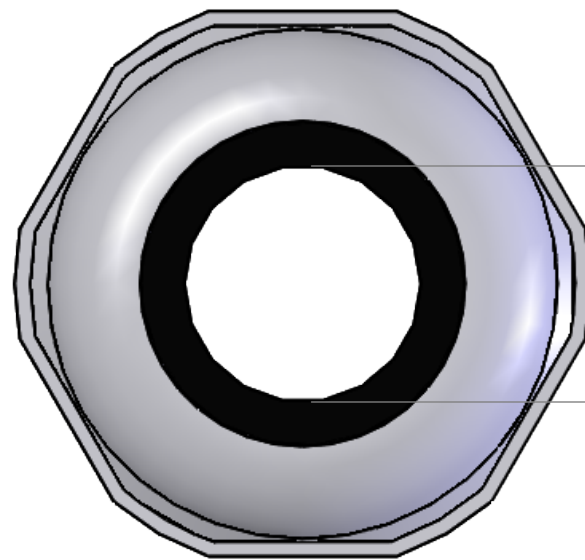
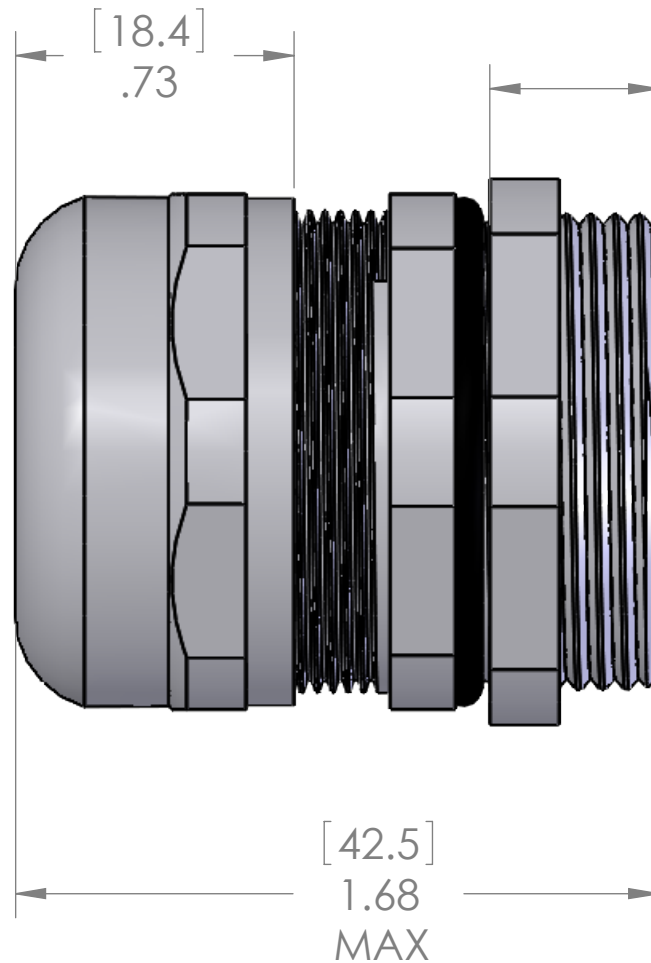


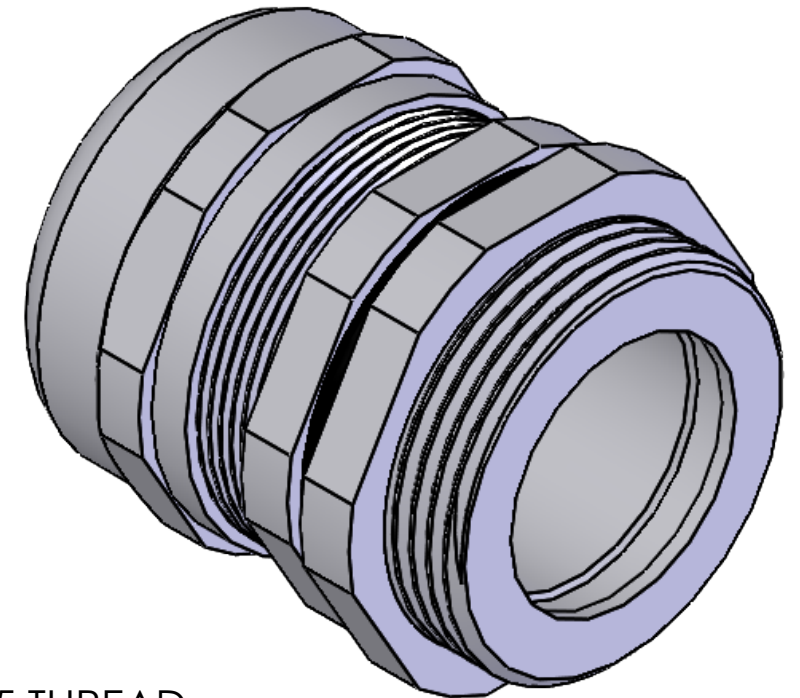
This is a shielding cable gland. For cables with a shield, the shield needs to be folded slightly around the gray plastic insert to allow the shield to be pinched between the gray plastic insert and the bottom of the gland.



[15.6]
Ø .62



M32x1.5 THREAD



MATERIALS:	
BODY:	NICKEL PLATED BRASS
INSERT:	POLYAMIDE
GROMMET:	NEOPRENE
LOCK NUT:	NICKEL PLATED BRASS
O-RING:	BUNA-N
SPECIFICATIONS:	
TEMPERATURE:	-20°C - +100°C
APPROVALS:	
U.S.	UL RECOGNIZED
CANADA	C-UL RECOGNIZED

PROPRIETARY AND CONFIDENTIAL
THE INFORMATION CONTAINED IN THIS DRAWING IS THE SOLE PROPERTY OF MENCOM CORPORATION. ANY REPRODUCTION IN PART OR AS A WHOLE WITHOUT THE WRITTEN PERMISSION OF MENCOM CORPORATION IS PROHIBITED.

SEALING RANGE: .551 - .787(14-20 MM)
SEAL RATED TO: IP68
RECOMMENDED HOLE: 32.5MM

UNLESS OTHERWISE SPECIFIED: DIMENSIONS ARE IN INCHES AND [MM]	DRAWN BY	DCG	MENCOM CORPORATION		
	DRAWN DATE	01/29/2024			
	CHECKED BY	JJH	TITLE:		
	CHECK DATE	01/29/2024			
MATERIAL FINISH DO NOT SCALE DRAWING	COMMENTS:		SIZE	DWG. NO.	REV
			B	MCGB-M32L	B
			SCALE: 3:1	WEIGHT:	SHEET 1 OF 1