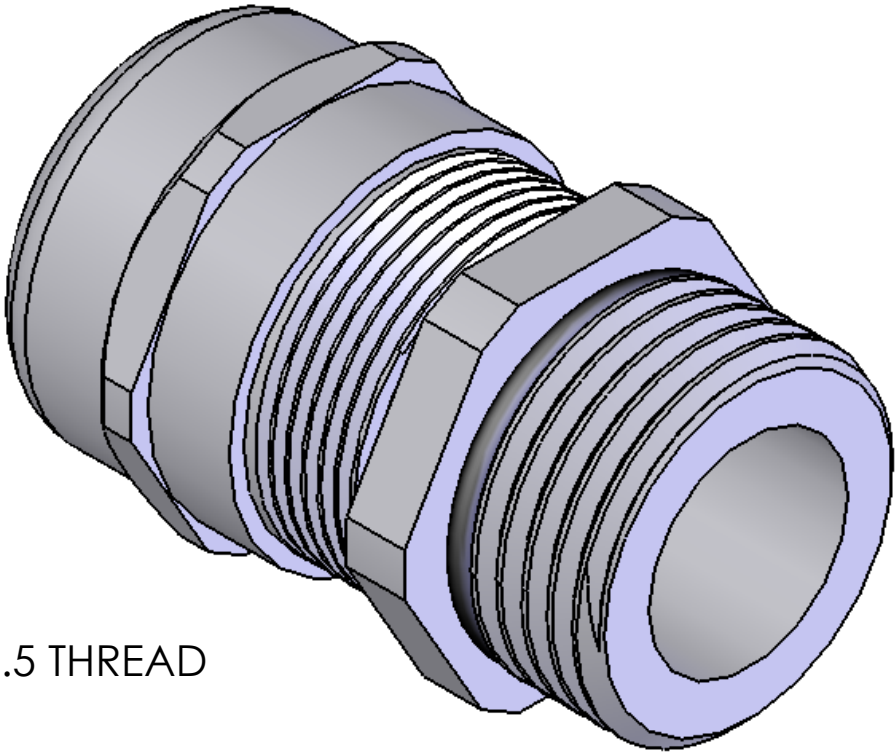
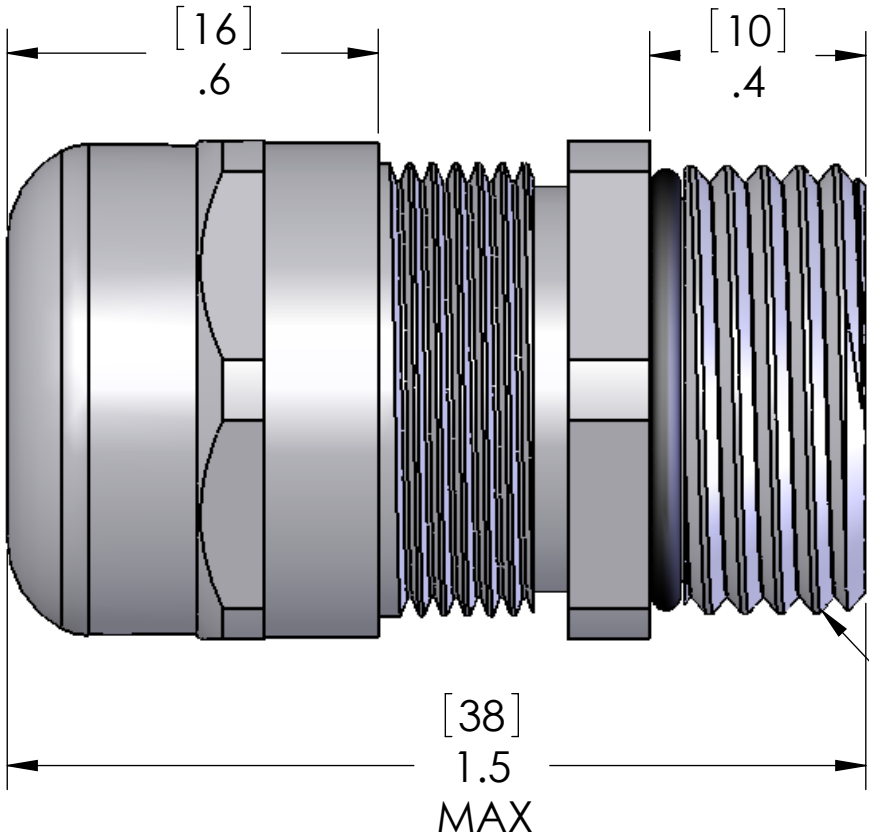
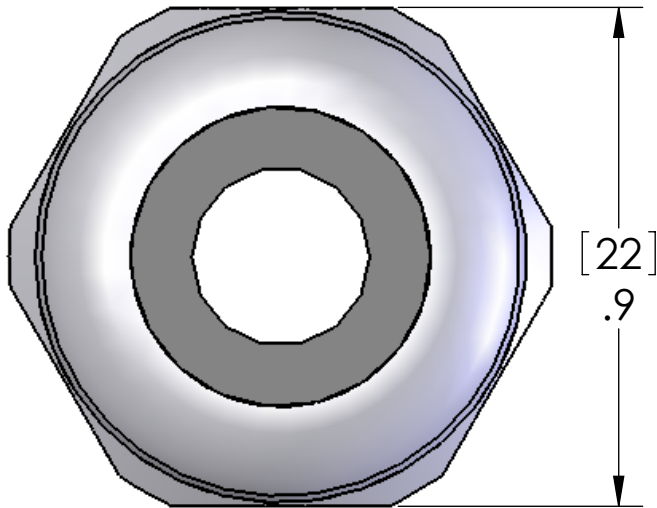


This is a shielding cable gland. For cables with a shield, the shield needs to be folded slightly around the gray plastic insert to allow the shield to be pinched between the gray plastic insert and the bottom of the gland.



LOCK NUT INCLUDED BUT NOT SHOWN

SEALING RANGE: 0.196" - 0.511" (5 - 13 MM)  
SEAL RATED TO: IP68  
RECOMMENDED HOLE: 20.5MM

MATERIALS:	
BODY:	NICKEL PLATED BRASS
INSERT:	POLYAMIDE
GROMMET:	NEOPRENE
LOCK NUT:	NICKEL PLATED BRASS
O-RING:	BUNA-N

PROPRIETARY AND CONFIDENTIAL  
THE INFORMATION CONTAINED IN THIS  
DRAWING IS THE SOLE PROPERTY OF  
MENCOM CORPORATION. ANY  
REPRODUCTION IN PART OR AS A WHOLE  
WITHOUT THE WRITTEN PERMISSION OF  
MENCOM CORPORATION IS  
PROHIBITED.

UNLESS OTHERWISE SPECIFIED:		NAME	MENCOM CORPORATION	
DIMENSIONS ARE IN INCHES & [MM]		DRAWN	BEM	TITLE:
		CHECKED		
		ENG APPR.		
		MFG APPR.		
MATERIAL		Q.A.		SIZE
		COMMENTS:		
FINISH				DWG. NO.
DO NOT SCALE DRAWING				MCGB-M20L
				REV
				A
		SCALE: 3:1	WEIGHT:	SHEET 1 OF 1