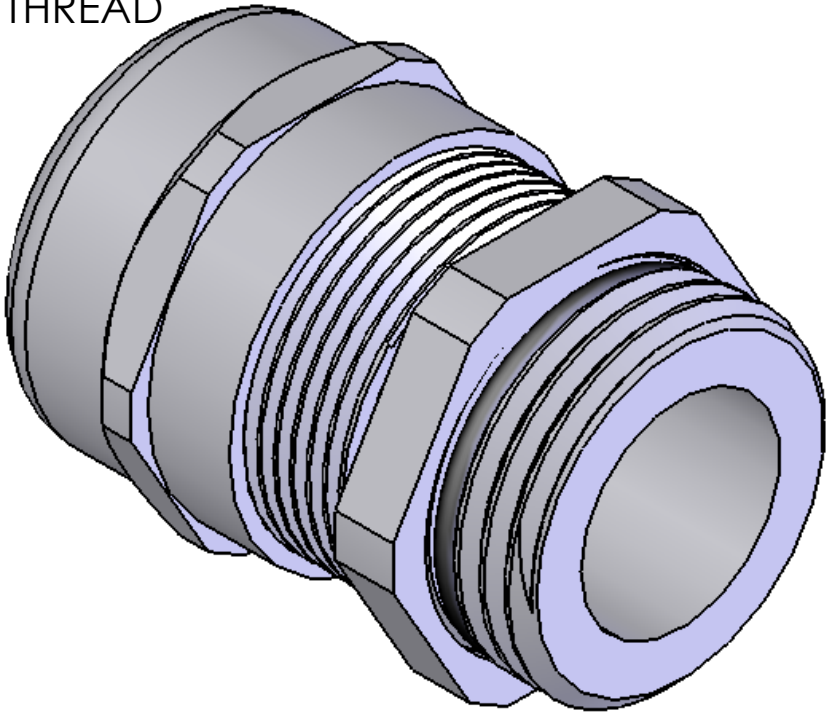
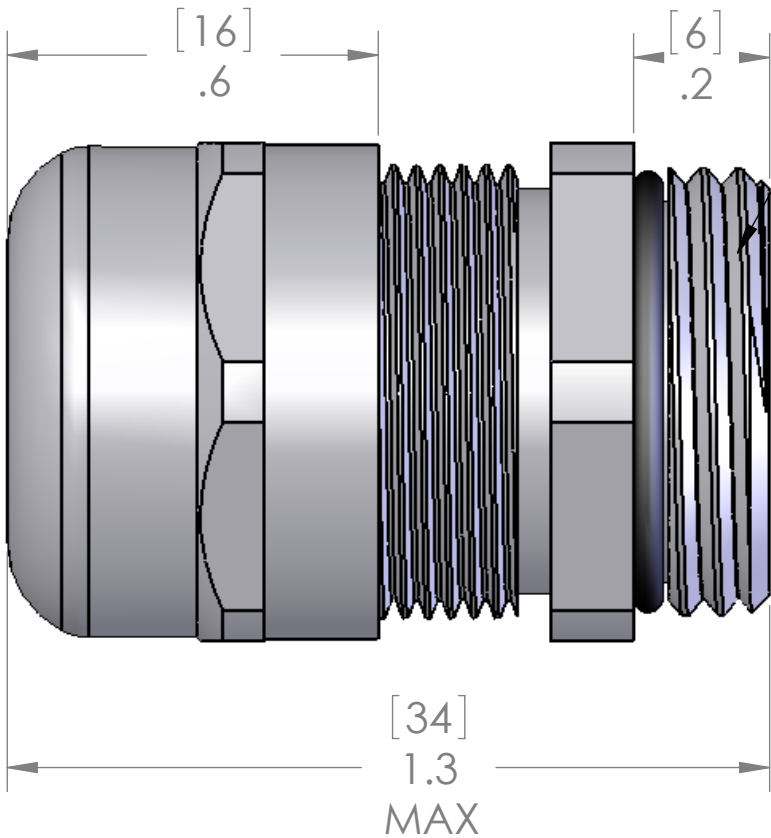
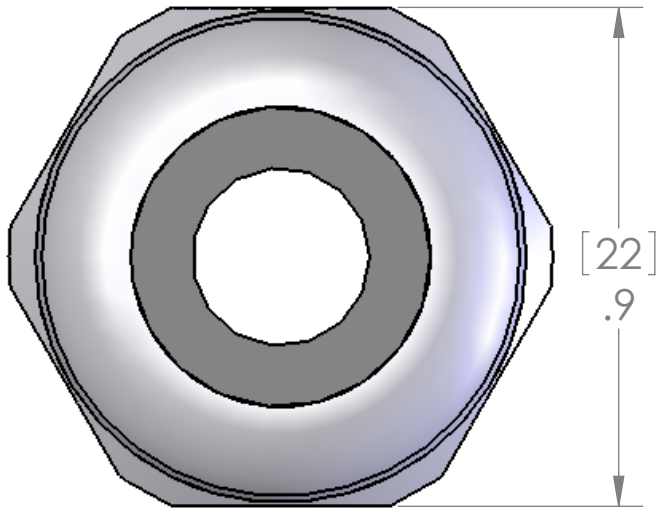


This is a shielding cable gland. For cables with a shield, the shield needs to be folded slightly around the gray plastic insert to allow the shield to be pinched between the gray plastic insert and the bottom of the gland.



SEALING RANGE: 0.196" - 0.511" (5 - 13 MM)
SEAL RATED TO: IP68
RECOMMENDED HOLE: 20.5MM

MATERIALS:	
BODY:	NICKEL PLATED BRASS
INSERT:	POLYAMIDE
GROMMET:	NEOPRENE
LOCK NUT:	NICKEL PLATED BRASS
O-RING:	BUNA-N

PROPRIETARY AND CONFIDENTIAL
THE INFORMATION CONTAINED IN THIS
DRAWING IS THE SOLE PROPERTY OF
MENCOM CORPORATION. ANY
REPRODUCTION IN PART OR AS A WHOLE
WITHOUT THE WRITTEN PERMISSION OF
MENCOM CORPORATION IS
PROHIBITED.

		UNLESS OTHERWISE SPECIFIED:		NAME	MENCOM CORPORATION		
		DIMENSIONS ARE IN INCHES & [MM]	DRAWN	BEM	TITLE:		
			CHECKED				
			ENG APPR.				
			MFG APPR.				
			Q.A.		SIZE DWG. NO. REV B MCGB-M20 A		
		MATERIAL	COMMENTS:				
		FINISH					
		DO NOT SCALE DRAWING			SCALE: 3:1	WEIGHT:	SHEET 1 OF 1