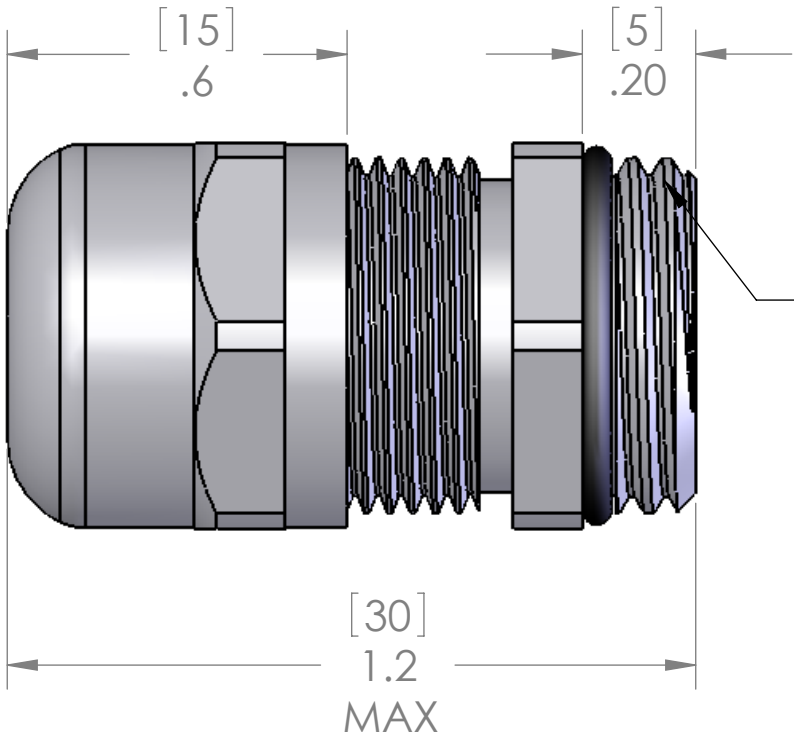
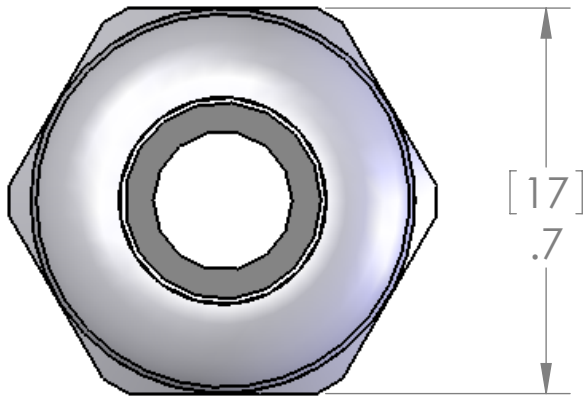
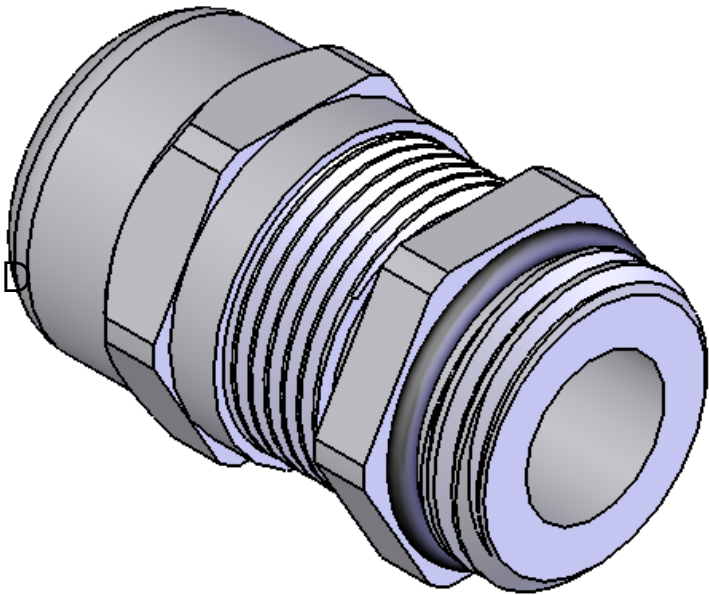


This is a shielding cable gland. For cables with a shield, the shield needs to be folded slightly around the gray plastic insert to allow the shield to be pinched between the gray plastic insert and the bottom of the gland.



M16x1.5 THREAD



SEALING RANGE: 0.118" - 0.354" (3 - 9 MM)
SEAL RATED TO: IP68
RECOMMENDED HOLE: 16.5 MM

| | |
|------------|---------------------|
| MATERIALS: | |
| BODY: | NICKEL PLATED BRASS |
| INSERT: | POLYAMIDE |
| GROMMET: | NEOPRENE |
| LOCK NUT: | NICKEL PLATED BRASS |
| O-RING: | BUNA-N |

PROPRIETARY AND CONFIDENTIAL
THE INFORMATION CONTAINED IN THIS DRAWING IS THE SOLE PROPERTY OF MENCOM CORPORATION. ANY REPRODUCTION IN PART OR AS A WHOLE WITHOUT THE WRITTEN PERMISSION OF MENCOM CORPORATION IS PROHIBITED.

| | | | | |
|---------------------------------|--|------------|--------------------|--------------|
| UNLESS OTHERWISE SPECIFIED: | | NAME | MENCOM CORPORATION | |
| DIMENSIONS ARE IN INCHES & [MM] | | DRAWN | BEM | TITLE: |
| | | CHECKED | | |
| | | ENG APPR. | | |
| | | MFG APPR. | | |
| MATERIAL | | Q.A. | | SIZE |
| | | COMMENTS: | | |
| FINISH | | | | DWG. NO. |
| DO NOT SCALE DRAWING | | | | MCGB-M16 |
| | | | | REV |
| | | | | A |
| | | SCALE: 3:1 | WEIGHT: | SHEET 1 OF 1 |