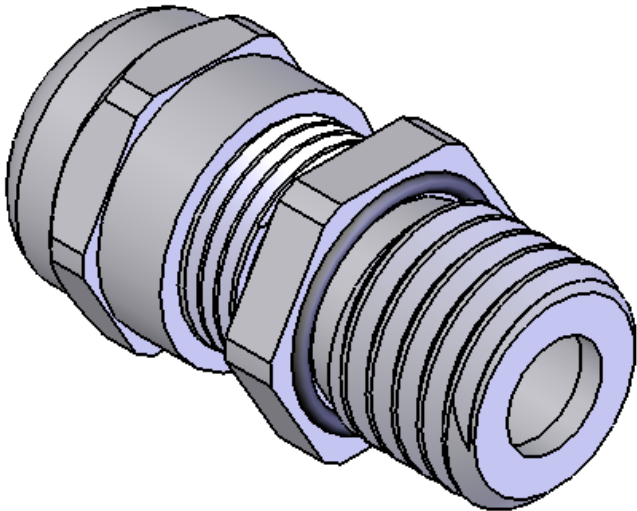
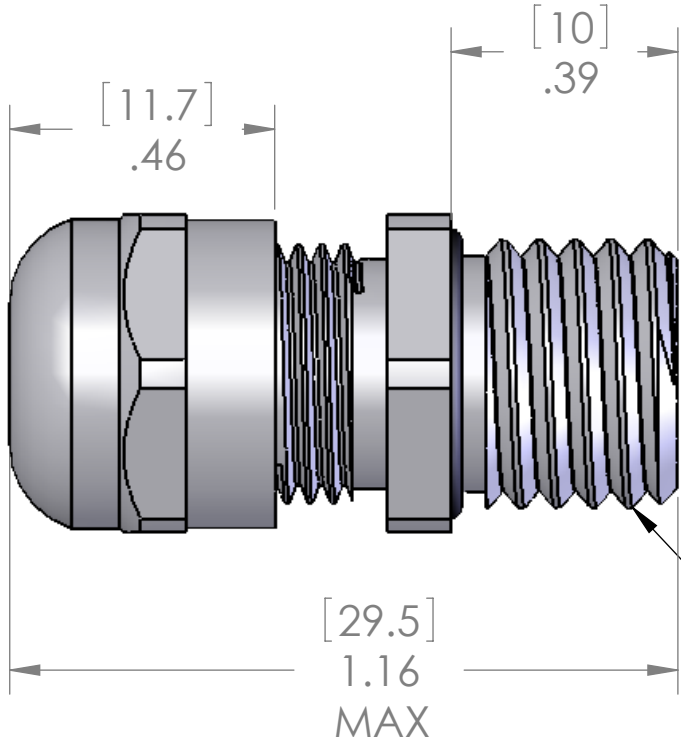
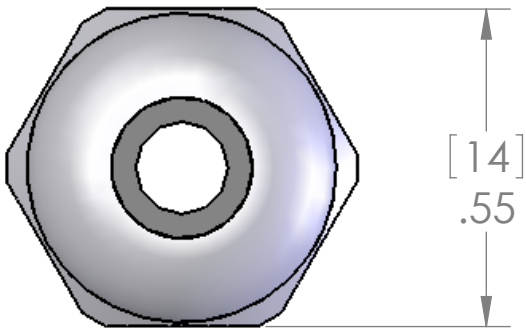




This is a shielding cable gland. For cables with a shield, the shield needs to be folded slightly around the gray plastic insert to allow the shield to be pinched between the gray plastic insert and the bottom of the gland.



LOCK NUT INCLUDED BUT NOT SHOWN

SEALING RANGE: 0.118" - 0.236" (3 - 6 MM)
SEAL RATED TO: IP68
RECOMMENDED HOLE: 12.5MM

MATERIALS:	
BODY:	NICKEL PLATED BRASS
INSERT:	POLYAMIDE
GROMMET:	NEOPRENE
LOCK NUT:	NICKEL PLATED BRASS
O-RING:	BUNA-N

PROPRIETARY AND CONFIDENTIAL
THE INFORMATION CONTAINED IN THIS
DRAWING IS THE SOLE PROPERTY OF
MENCOM CORPORATION. ANY
REPRODUCTION IN PART OR AS A WHOLE
WITHOUT THE WRITTEN PERMISSION OF
MENCOM CORPORATION IS
PROHIBITED.

		UNLESS OTHERWISE SPECIFIED: DIMENSIONS ARE IN INCHES		NAME	MENCOM CORPORATION			
			DRAWN	BEM				
			CHECKED		TITLE:			
			ENG APPR.					
			MFG APPR.					
		Q.A.						
		MATERIAL	COMMENTS:	SIZE		DWG. NO.	REV	
				FINISH	B	MCGB-M12L		A
		DO NOT SCALE DRAWING			SCALE: 3:1		WEIGHT:	SHEET 1 OF 1