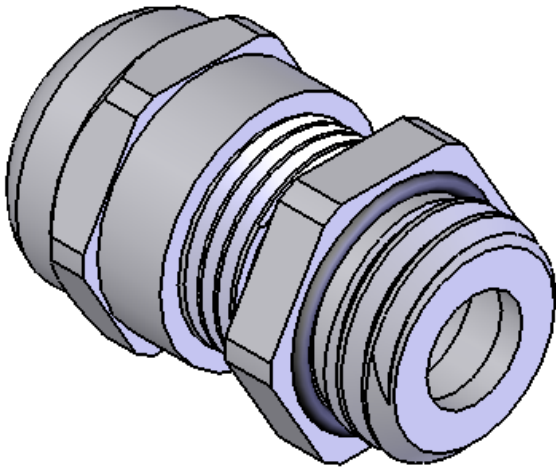
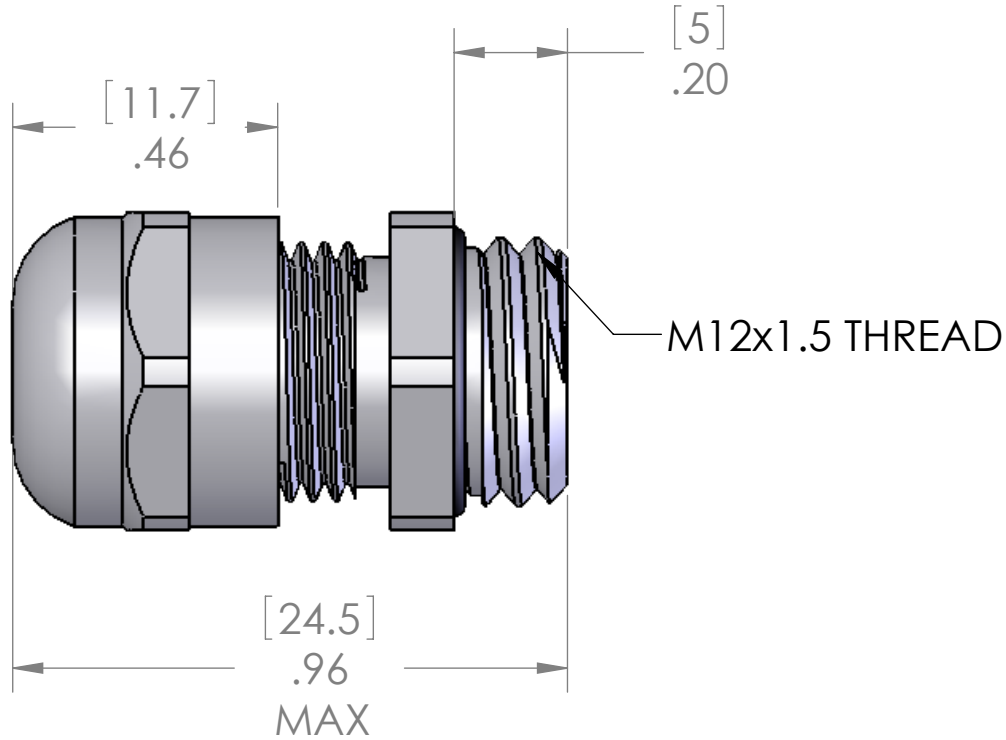
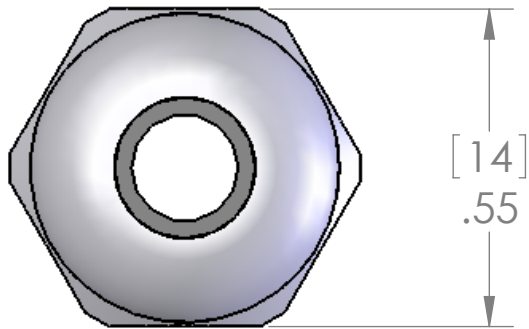




This is a shielding cable gland. For cables with a shield, the shield needs to be folded slightly around the gray plastic insert to allow the shield to be pinched between the gray plastic insert and the bottom of the gland.



SEALING RANGE: .118 - .236(3 - 6 MM)
SEAL RATED TO: IP68
RECEOMMENDED HOLE: 12.5MM

MATERIALS:	
BODY:	NICKEL PLATED BRASS
INSERT:	POLYAMIDE
GROMMET:	NEOPRENE
LOCK NUT:	NICKEL PLATED BRASS
O-RING:	BUNA-N

PROPRIETARY AND CONFIDENTIAL
THE INFORMATION CONTAINED IN THIS
DRAWING IS THE SOLE PROPERTY OF
MENCOM CORPORATION. ANY
REPRODUCTION IN PART OR AS A WHOLE
WITHOUT THE WRITTEN PERMISSION OF
MENCOM CORPORATION IS
PROHIBITED.

UNLESS OTHERWISE SPECIFIED:		NAME	MENCOM CORPORATION	
DIMENSIONS ARE IN INCHES		DRAWN	BEM	TITLE:
		CHECKED		
		ENG APPR.		
		MFG APPR.		
		Q.A.		SIZE
		COMMENTS:		
MATERIAL		DWG. NO.		REV
FINISH		MCGB-M12		A
DO NOT SCALE DRAWING		SCALE: 3:1	WEIGHT:	SHEET 1 OF 1