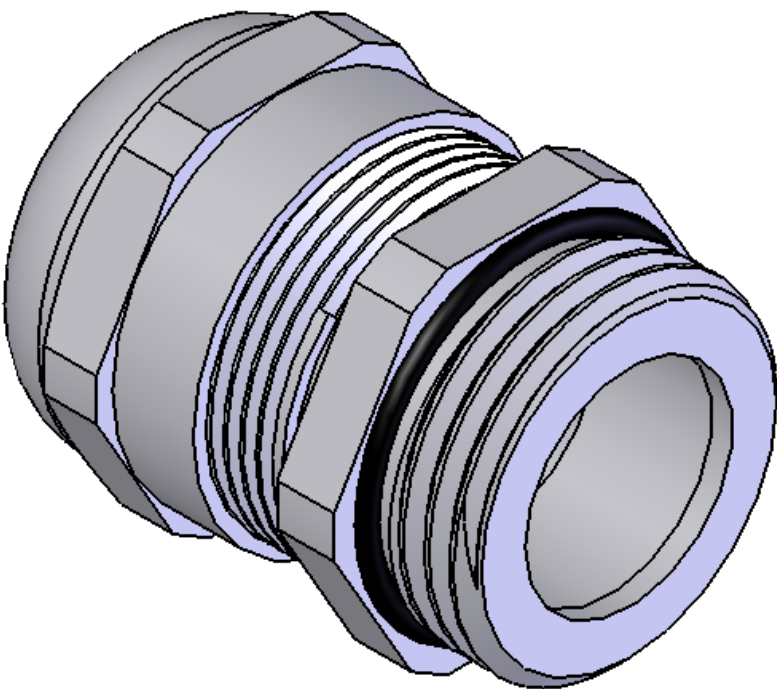
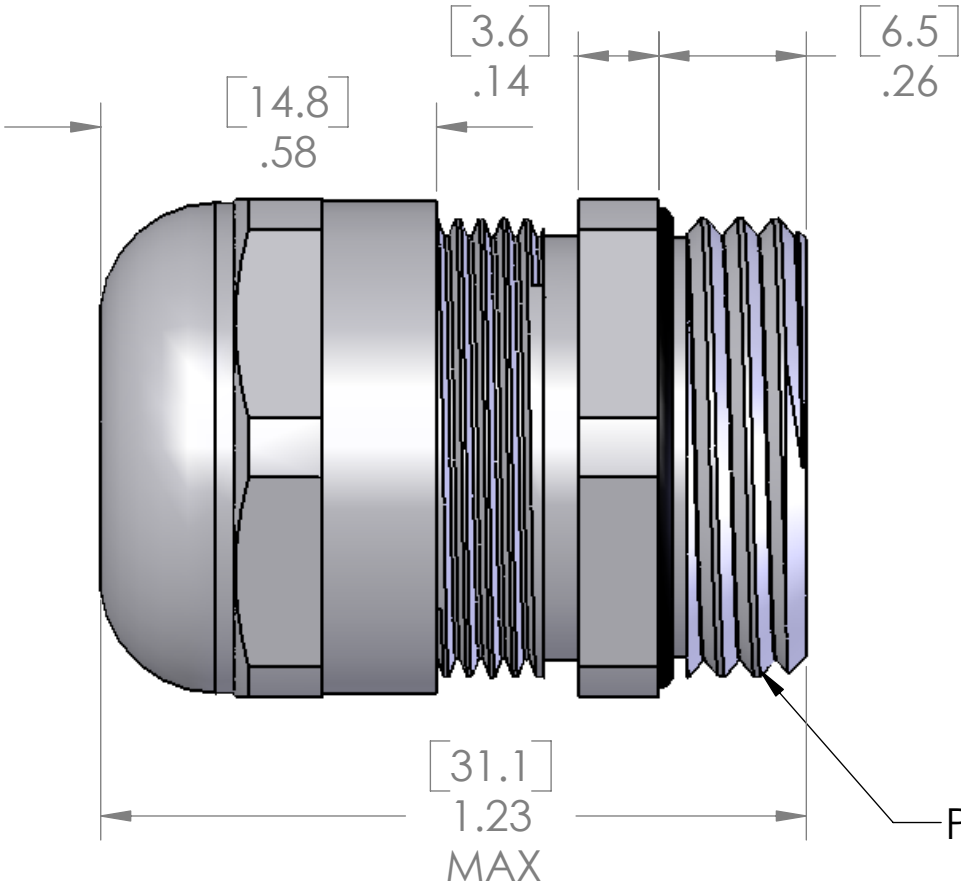
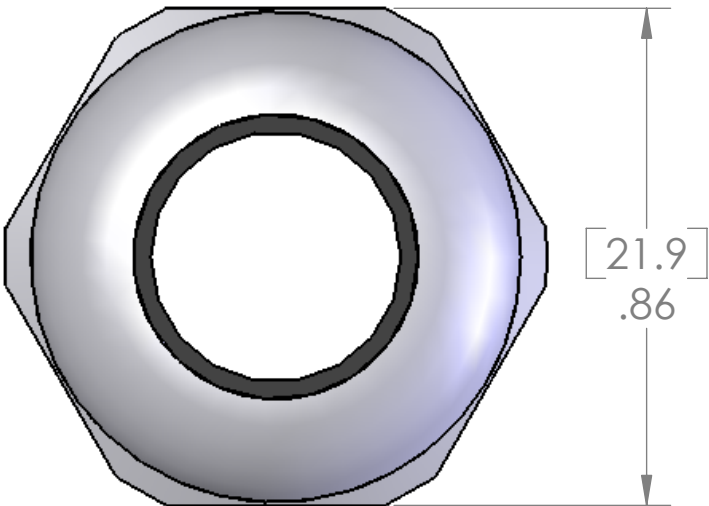


REVISIONS			
REV.	DESCRIPTION	DATE	APPROVED
A	REDRAWN IN NEW CAD	1/12/2005	
B	ADDED TABLES	6/1/2006	



SPECIFICATIONS:	Ⓑ
TIGHTENING TORQUE:	6.25 Nm
TEMPERATURE:	-20°C - +100°C

LOCK NUT INCLUDED BUT NOT SHOWN
SEAL RATED TO: IP68

PART NUMBER	SEALING RANGE
Ⓑ MCGB-13.5	.236 - .472 [6 - 12 mm]
MCGB-13.5R	.197 - .354 [5 - 9 mm]

MATERIALS:	
BODY:	NICKEL PLATED BRASS
INSERT:	POLYAMIDE
GROMMET:	NEOPRENE
LOCK NUT:	NICKEL PLATED BRASS
O-RING:	BUNA-N

PROPRIETARY AND CONFIDENTIAL
THE INFORMATION CONTAINED IN THIS DRAWING IS THE SOLE PROPERTY OF MENCOM CORPORATION. ANY REPRODUCTION IN PART OR AS A WHOLE WITHOUT THE WRITTEN PERMISSION OF MENCOM CORPORATION IS PROHIBITED.

UNLESS OTHERWISE SPECIFIED:	NAME
DIMENSIONS ARE IN INCHES	BEM
	DRAWN
	CHECKED
	ENG APPR.
	MFG APPR.
	Q.A.
	COMMENTS:
MATERIAL	
FINISH	
DO NOT SCALE DRAWING	

MENCOM CORPORATION			
TITLE: METAL CABLE GLAND, PG13.5			
SIZE B	DWG. NO. MCGB-13.5	REV B	
SCALE: 3:1	WEIGHT:	SHEET 1 OF 1	