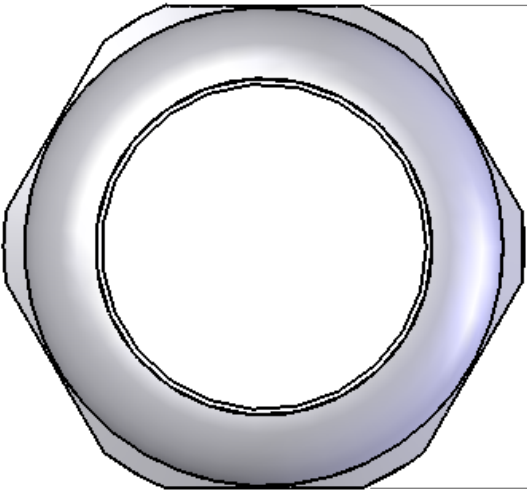
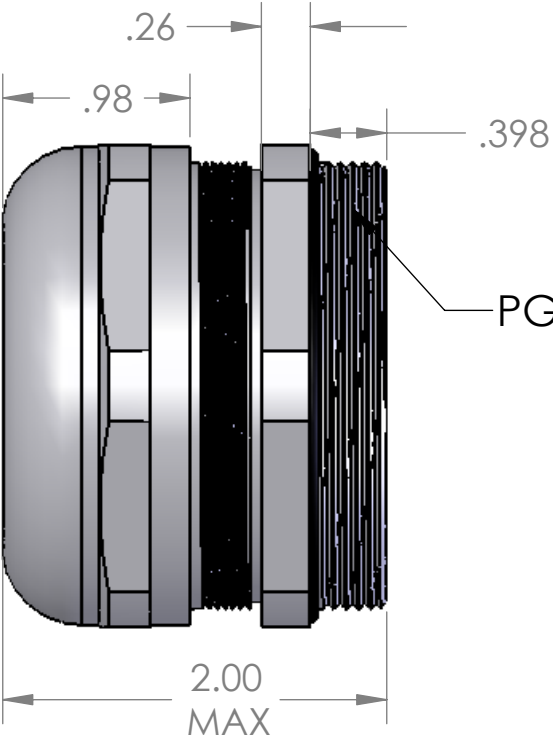


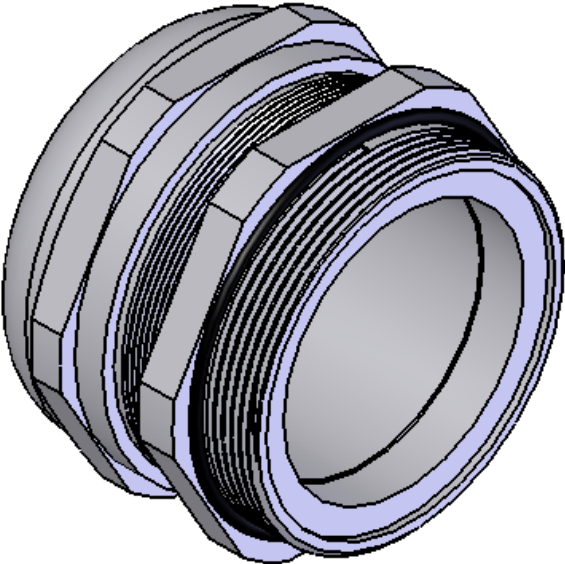
REVISIONS			
REV.	DESCRIPTION	DATE	APPROVED
A	REDRAWN IN SW	6/1/2006	



2.52



PG48 THREAD



LOCK NUT INCLUDED BUT NOT SHOWN

SPECIFICATIONS:	
TIGHTENING TORQUE:	10 Nm
TEMPERATURE:	-20°C - +100°C

MATERIALS:	
BODY:	NICKEL PLATED BRASS
INSERT:	POLYAMIDE
GROMMET:	NEOPRENE
LOCK NUT:	NICKEL PLATED BRASS
O-RING:	BUNA-N

SEAL RATED AT IP 68

PART NUMBER	SEALING RANGE
MCG-48	1.34 - 1.73 [34 - 44 mm]
MCG-48R	1.14 - 1.37 [29 - 35 mm]

**PROPRIETARY AND CONFIDENTIAL**  
THE INFORMATION CONTAINED IN THIS DRAWING IS THE SOLE PROPERTY OF MENCOM CORPORATION. ANY REPRODUCTION IN PART OR AS A WHOLE WITHOUT THE WRITTEN PERMISSION OF MENCOM CORPORATION IS PROHIBITED.

UNLESS OTHERWISE SPECIFIED:		NAME
DIMENSIONS ARE IN INCHES		DWM
		DRAWN
		CHECKED
		ENG APPR.
		MFG APPR.
		Q.A.
		COMMENTS:
MATERIAL		
FINISH		
DO NOT SCALE DRAWING		

MENCOM CORPORATION			
TITLE:			
SIZE	DWG. NO.	REV	
B	MCG-48	A	
SCALE: 1:1	WEIGHT:	SHEET 1 OF 1	