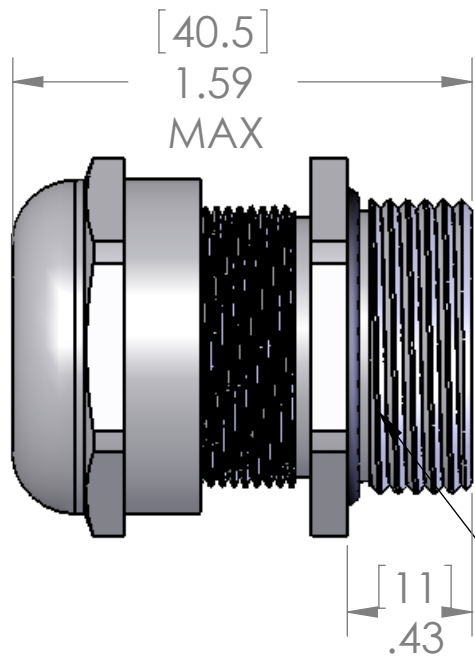
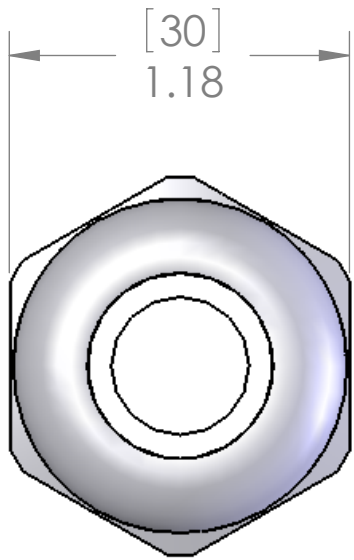
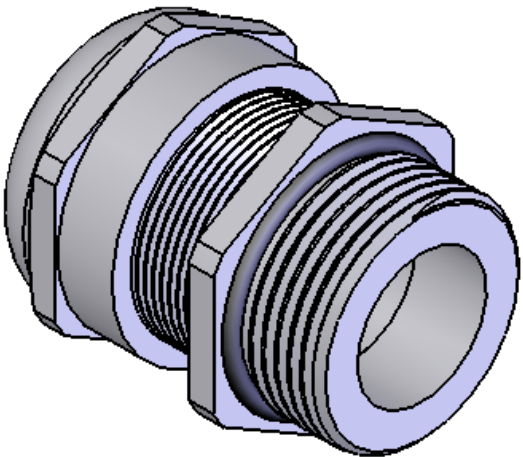




This is a shielding cable gland. For cables with a shield, the shield needs to be folded slightly around the gray plastic insert to allow the shield to be pinched between the gray plastic insert and the bottom of the gland.



3/4" NPT THREAD



SEALING RANGE: .315 - .630 (8 - 16 MM)
SEAL RATED TO: IP68

MATERIALS:	
BODY:	NICKEL PLATED BRASS
INSERT:	POLYAMIDE
GROMMET:	NEOPRENE

PROPRIETARY AND CONFIDENTIAL
THE INFORMATION CONTAINED IN THIS DRAWING IS THE SOLE PROPERTY OF MENCOM CORPORATION. ANY REPRODUCTION IN PART OR AS A WHOLE WITHOUT THE WRITTEN PERMISSION OF MENCOM CORPORATION IS PROHIBITED.

		UNLESS OTHERWISE SPECIFIED: DIMENSIONS ARE IN INCHES & [MM]		NAME	MENCOM CORPORATION		
			DRAWN	DWM			
			CHECKED				
			ENG APPR.				
			MFG APPR.				
		Q.A.					
		MATERIAL	COMMENTS:		SIZE	DWG. NO.	REV
					B	MCG-3/4	A
					FINISH		
		DO NOT SCALE DRAWING			SCALE: 3:2	WEIGHT:	SHEET 1 OF 1