

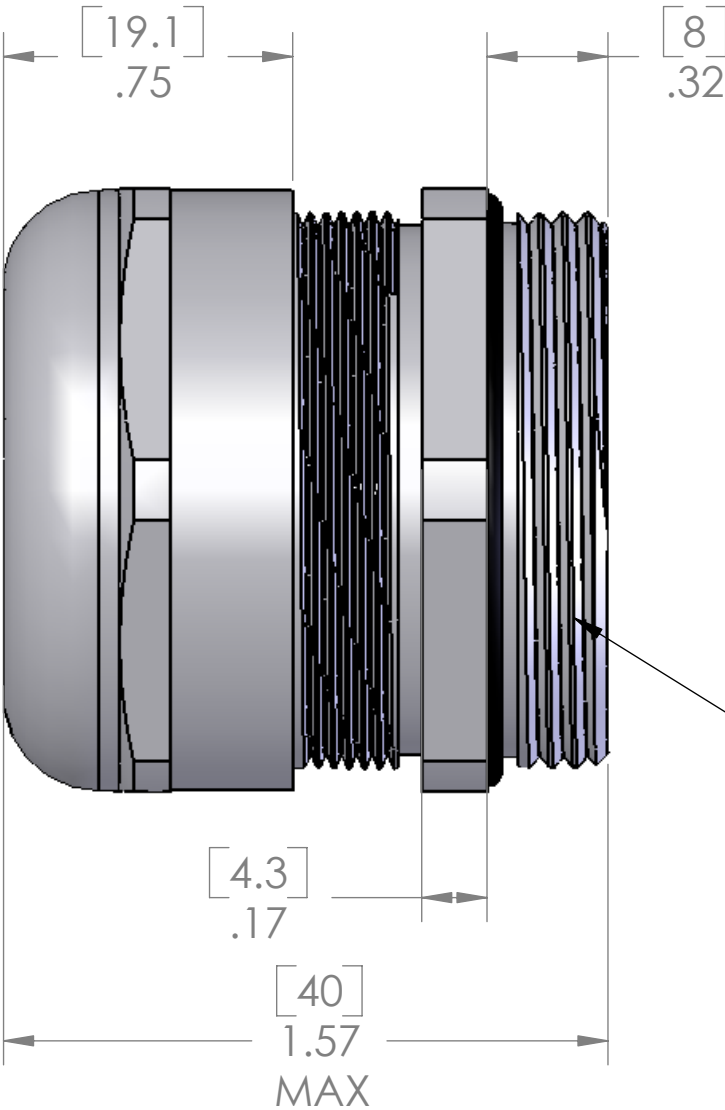
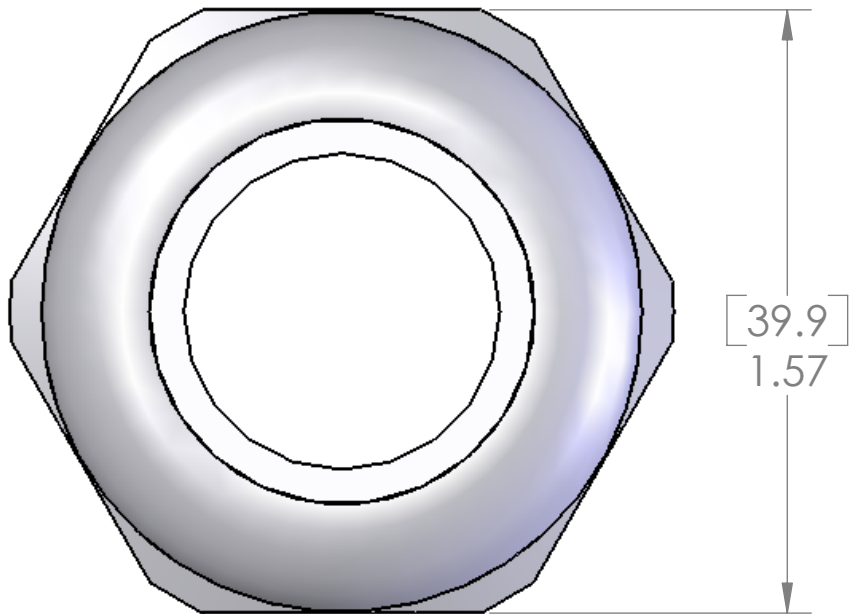
REVISIONS			
REV.	DESCRIPTION	DATE	APPROVED
A	REDRAWN IN SW	12/2/2004	
B	TABLE ADDED	6/1/2006	

D

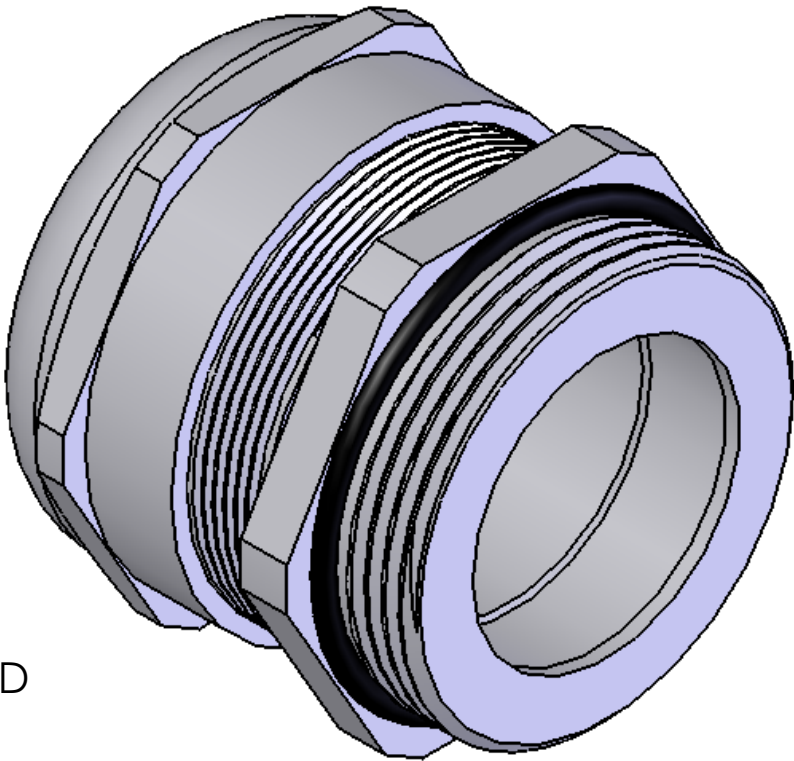
C

B

A



PG29 THREAD



D

C

B

A

SPECIFICATIONS:	(B)
TIGHTENING TORQUE:	10 Nm
TEMPERATURE:	-20°C - +100°C

MATERIALS:	
BODY:	NICKEL PLATED BRASS
INSERT:	POLYAMIDE
GROMMET:	NEOPRENE
LOCK NUT:	NICKEL PLATED BRASS
O-RING:	BUNA-N

LOCK NUT INCLUDED BUT NOT SHOWN

SEAL RATED AT IP 68

PROPRIETARY AND CONFIDENTIAL
THE INFORMATION CONTAINED IN THIS
DRAWING IS THE SOLE PROPERTY OF
MENCOM CORPORATION. ANY
REPRODUCTION IN PART OR AS A WHOLE
WITHOUT THE WRITTEN PERMISSION OF
MENCOM CORPORATION IS
PROHIBITED.

PART NUMBER	SEALING RANGE
MCG-29	0.709" - 0.984" [18 - 25MM]
MCG-29R	0.472" - 0.787" [12 - 20MM]

UNLESS OTHERWISE SPECIFIED:		NAME	MENCOM CORPORATION	
DIMENSIONS ARE IN INCHES AND [MM]		DRAWN	BEM	TITLE:
		CHECKED		
		ENG APPR.		
		MFG APPR.		
		Q.A.		
		COMMENTS:		
MATERIAL		SIZE		DWG. NO.
FINISH		B		MCG-29
DO NOT SCALE DRAWING		SCALE: 2:1		WEIGHT:
		SHEET 1 OF 1		REV B