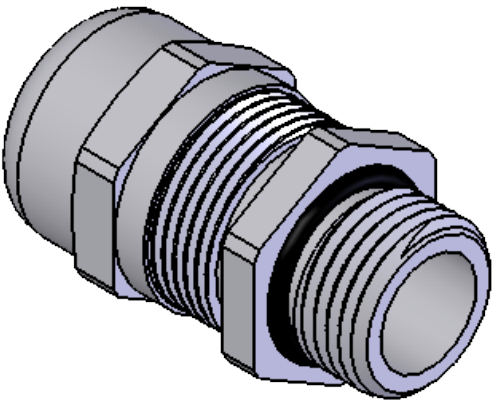
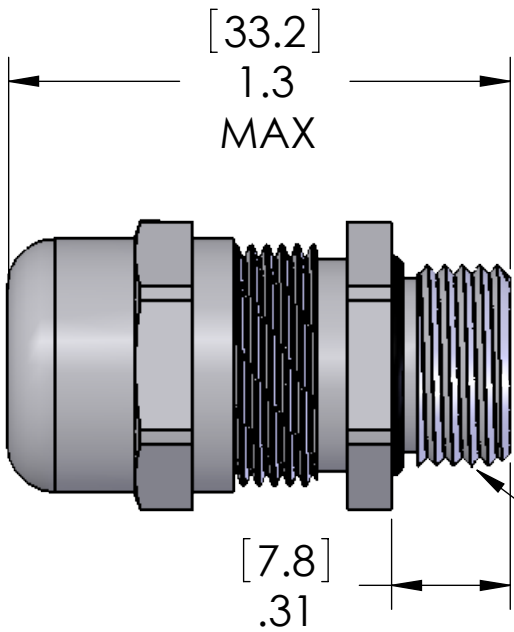
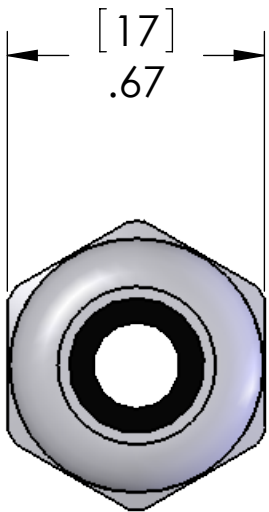




This is a shielding cable gland. For cables with a shield, the shield needs to be folded slightly around the gray plastic insert to allow the shield to be pinched between the gray plastic insert and the bottom of the gland.



SEALING RANGE: .120 - .390 (3-10 MM)
SEAL RATED TO: IP68

MATERIALS:	
BODY:	NICKEL PLATED BRASS
INSERT:	POLYAMIDE
GROMMET:	NEOPRENE

PROPRIETARY AND CONFIDENTIAL
THE INFORMATION CONTAINED IN THIS DRAWING IS THE SOLE PROPERTY OF MENCOM CORPORATION. ANY REPRODUCTION IN PART OR AS A WHOLE WITHOUT THE WRITTEN PERMISSION OF MENCOM CORPORATION IS PROHIBITED.

UNLESS OTHERWISE SPECIFIED: DIMENSIONS ARE IN INCHES AND [MM]	DRAWN BY	DCG	MENCOM CORPORATION		
	DRAWN DATE	03/31/2017			
	CHECKED BY	ADM	TITLE: MTL CBL GLND 1/4" .12"-.39"		
	CHECK DATE	03/31/2017			
MATERIAL	COMMENTS:		SIZE	DWG. NO.	REV
FINISH			B	MCG-1/4	A
DO NOT SCALE DRAWING			SCALE: 2:1	WEIGHT:	SHEET 1 OF 1