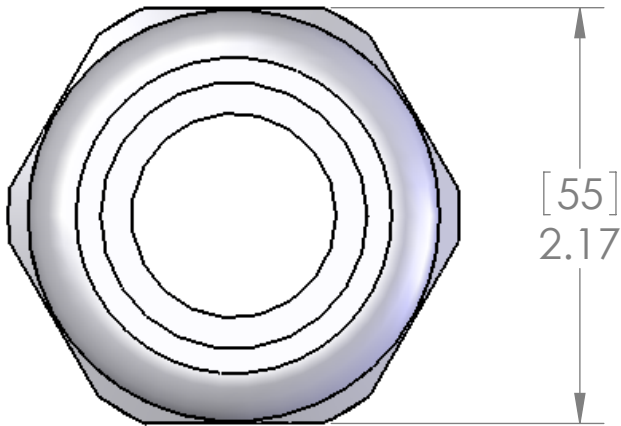
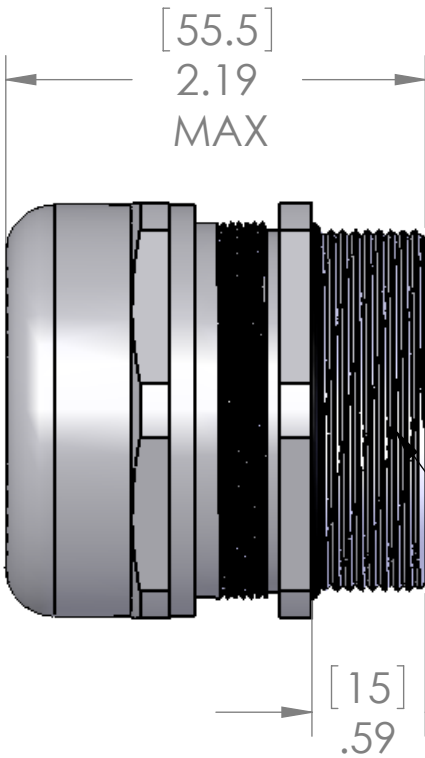


This is a shielding cable gland. For cables with a shield, the shield needs to be folded slightly around the gray plastic insert to allow the shield to be pinched between the gray plastic insert and the bottom of the gland.

REVISIONS		
REV.	DESCRIPTION	DATE
A	REDRAWN IN SW	8/15/2006



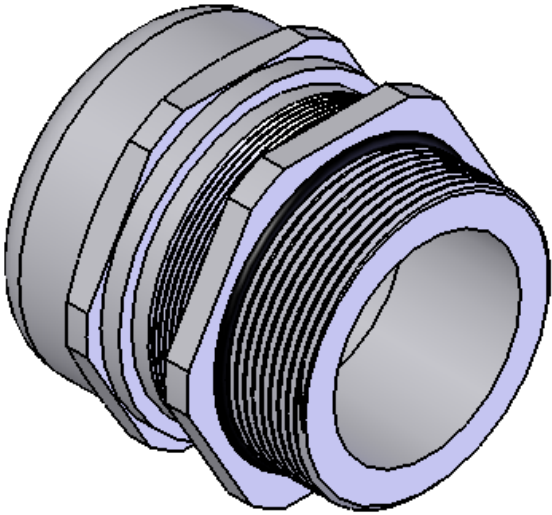
[55]
2.17



[55.5]
2.19
MAX

[15]
.59

1.5" NPT THREAD



SEALING RANGE: .827 - 1.378 (21 - 35 MM)
SEAL RATED TO: IP68

MATERIALS:	
BODY:	NICKEL PLATED BRASS
INSERT:	POLYAMIDE
GROMMET:	NEOPRENE

PROPRIETARY AND CONFIDENTIAL
THE INFORMATION CONTAINED IN THIS
DRAWING IS THE SOLE PROPERTY OF
MENCOM CORPORATION. ANY
REPRODUCTION IN PART OR AS A WHOLE
WITHOUT THE WRITTEN PERMISSION OF
MENCOM CORPORATION IS
PROHIBITED.

UNLESS OTHERWISE SPECIFIED:		NAME	MENCOM CORPORATION	
DIMENSIONS ARE IN INCHES & [MM]	DRAWN	DWM	TITLE:	
	CHECKED		SHIELDED BRASS CABLE GLAND	
	ENG APPR.		1.5" NPT THREADS	
	MFG APPR.			
MATERIAL	Q.A.		SIZE	REV
	COMMENTS:		B	A
FINISH			DWG. NO.	
			MCG-1.5	
DO NOT SCALE DRAWING			SCALE: 1:1	SHEET 1 OF 1
			WEIGHT:	