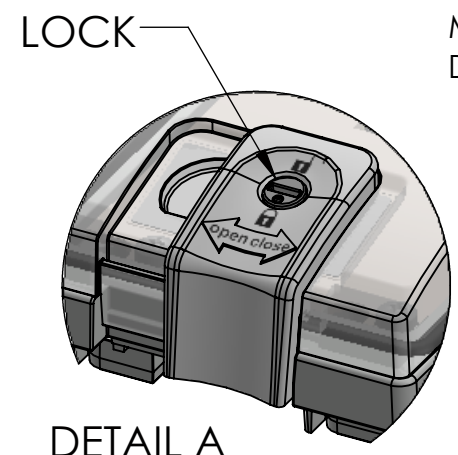
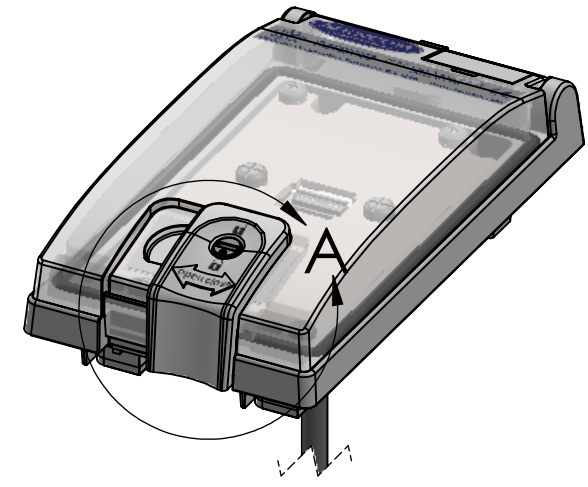
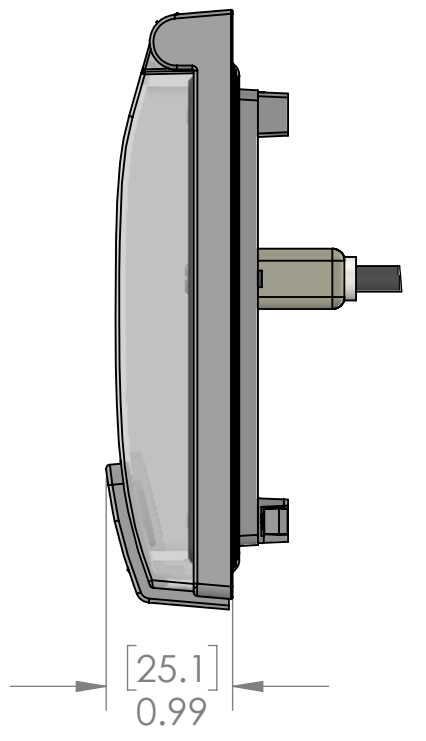
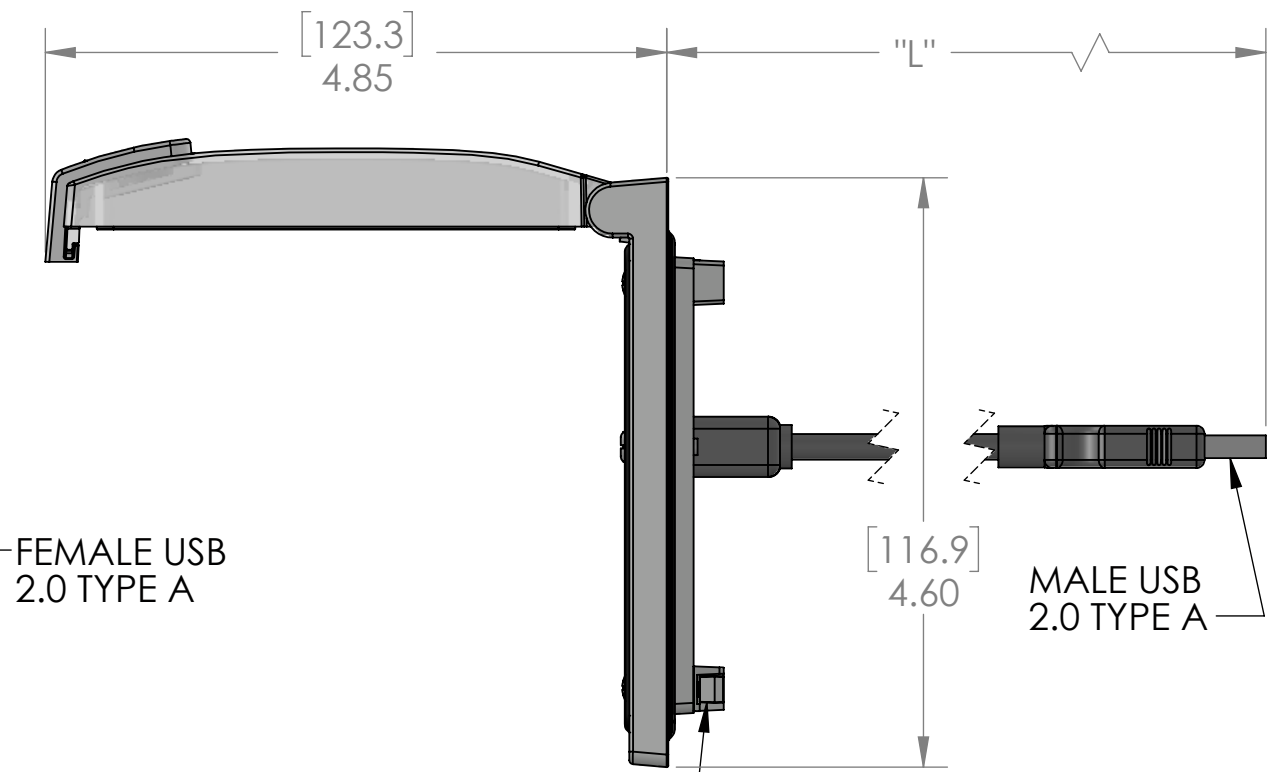
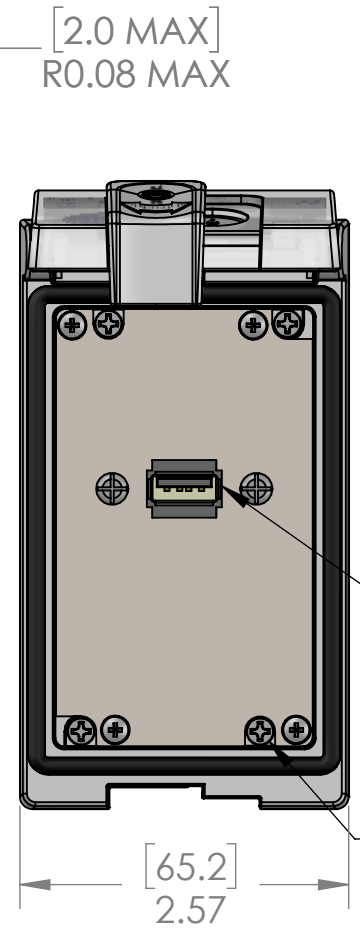
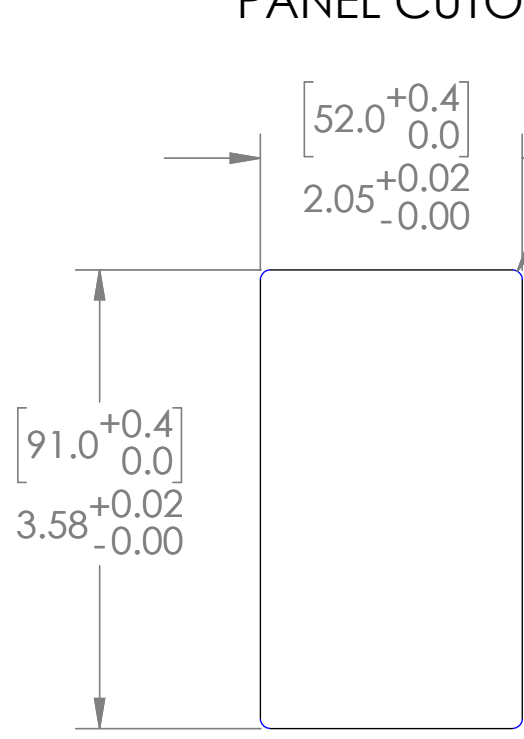


PANEL CUTOUT



DETAIL A  
SCALE 1 : 1

SLIDE LATCH TO OPEN/CLOSE  
ROTATE LOCK TO LOCK CLOSED

FEMALE USB  
2.0 TYPE A

MALE USB  
2.0 TYPE A

(X4) USE PH2 SCREW  
DRIVER ON MOUNTING  
SCREWS. (REF. MOUNTING  
SCREW TORQUE)

ROTATE TWO TURNS COUNTER  
CLOCKWISE TO RELEASE THE  
TURN BUCKLE PRIOR TO TIGHTENING

TURN BUCKLES ROTATE 90 DEG. INTO  
THEIR CLAMPING POSITION AS  
MOUNTING SCREWS TIGHTEN.  
DO NOT OVER-TORQUE!

PART NUMBER	LENGTH "L"
LP1-USB-03	3 FEET
LP1-USB-06	6 FEET
LP1-USB-10	10 FEET

These devices shall be mounted on enclosures having adequate strength and thickness and with adequate spacing provided. Seal rating is based on mounting to a surface that is clean, flat and smooth.



PIC RATINGS/SPECIFICATIONS	
NEMA/UL   EN 60529:	4, 12   IP65
PANEL THICKNESS:	5.0mm max
MOUNTING SCREW TORQUE:	0.8N-m

OPERATING TEMPERATURE: (-10°C / +80° C (+14° F / +176° F))

HOUSING MATERIALS		UNLESS OTHERWISE SPECIFIED:
BODY:	NICKEL PLATED ZINC	DIMENSIONS ARE IN INCHES AND [MM]
GASKETS:	PUR FIPG	
FRONT COVER:	POLYCARBONATE	
LATCH & LOCK:	PBT	

DRAWN BY:	DG
DRAWN DATE:	09/29/2017
CHECKED BY:	DWM
CHECK DATE:	10/09/2017

**MENCOM CORPORATION**  
TITLE:  
**USB PCBL; LP1**

**PROPRIETARY AND CONFIDENTIAL**  
THE INFORMATION CONTAINED IN THIS DRAWING IS THE SOLE PROPERTY OF MENCOM CORPORATION. ANY REPRODUCTION IN PART OR AS A WHOLE WITHOUT THE WRITTEN PERMISSION OF MENCOM CORPORATION IS PROHIBITED.

MATERIAL	
FINISH	
DO NOT SCALE DRAWING	

COMMENTS:

SIZE	DWG. NO.	REV
<b>B</b>	LP1-USB-ZZ	<b>B</b>
SCALE: 2:3	WEIGHT:	SHEET 1 OF 1