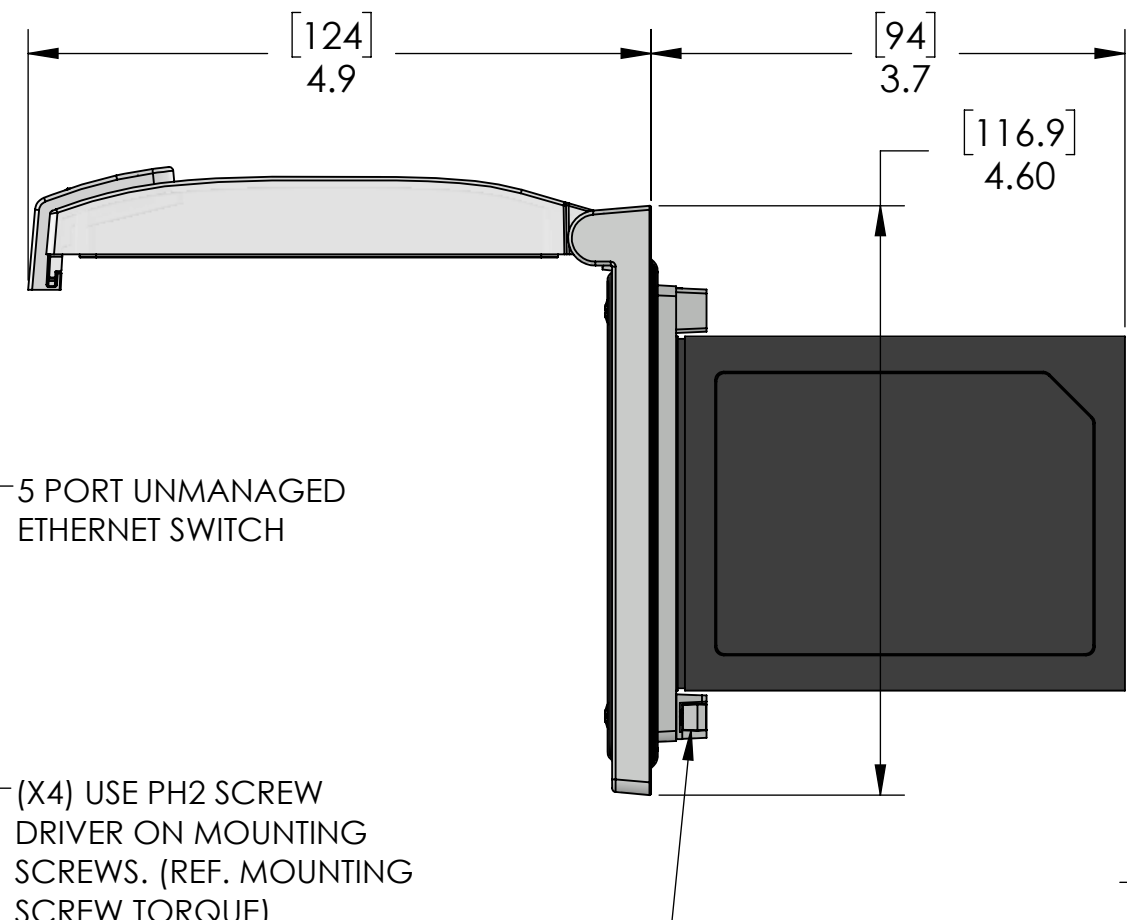
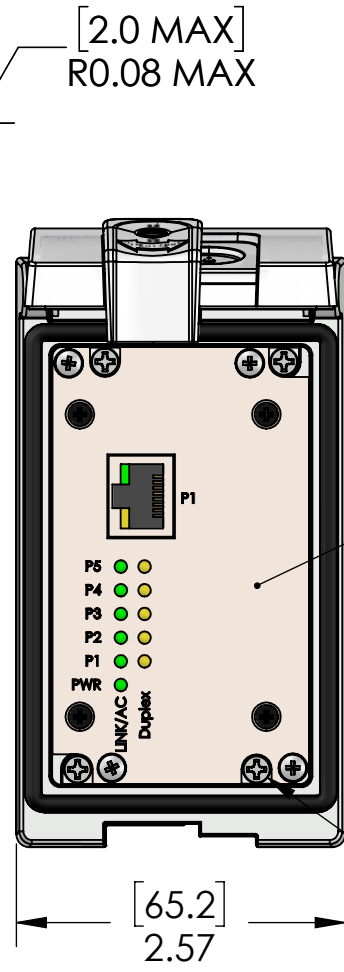
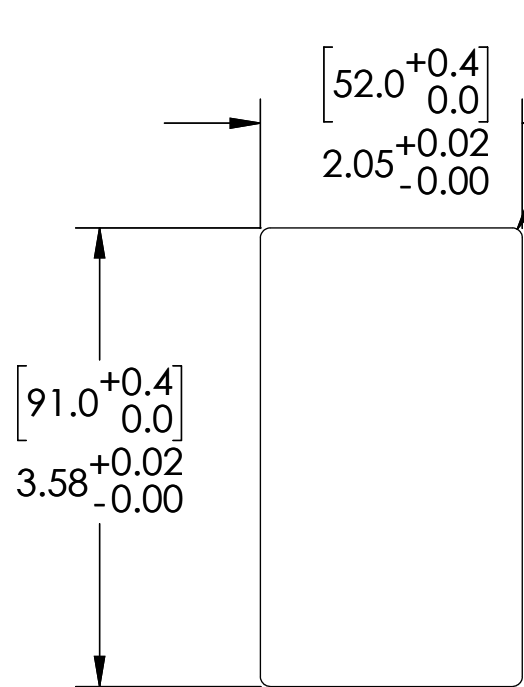
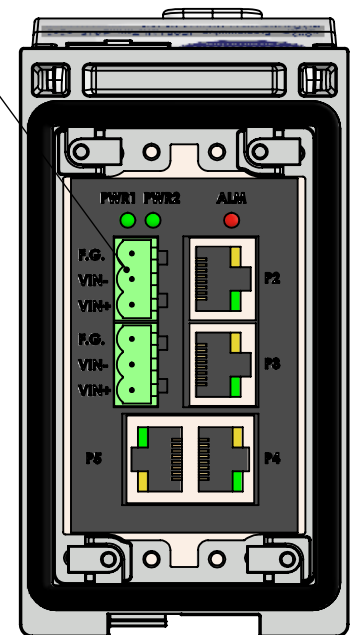


PANEL CUTOUT



2 PLUGGABLE TERMINAL BLOCKS INCLUDED (NOT SHOWN)



5 PORT UNMANAGED ETHERNET SWITCH

(X4) USE PH2 SCREW DRIVER ON MOUNTING SCREWS. (REF. MOUNTING SCREW TORQUE)

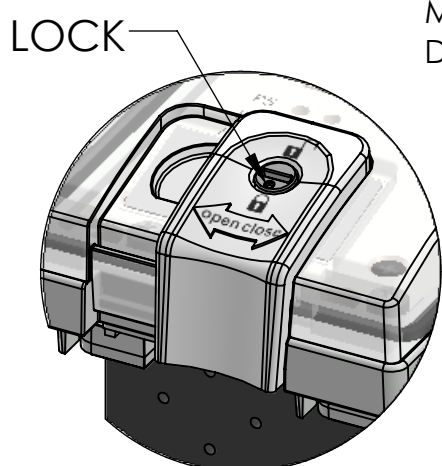
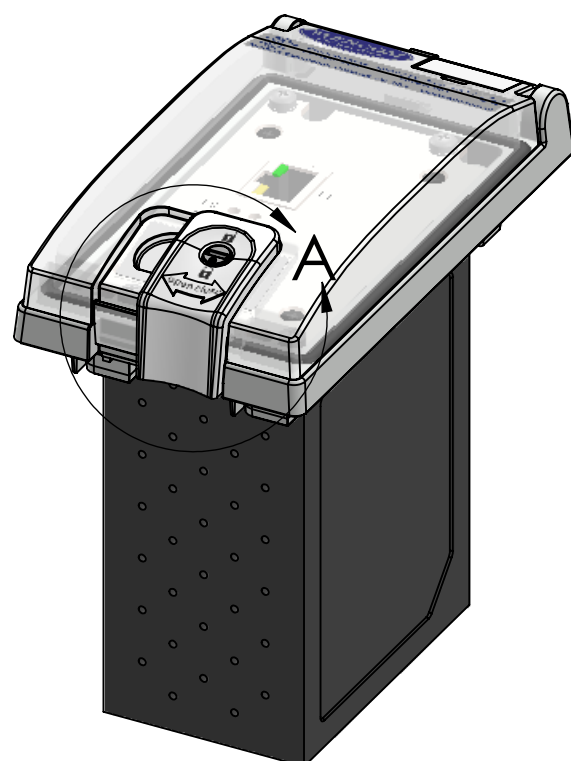
ROTATE TWO TURNS COUNTER CLOCKWISE TO RELEASE THE TURN BUCKLE PRIOR TO TIGHTENING

TURN BUCKLES ROTATE 90 DEG. INTO THEIR CLAMPING POSITION AS MOUNTING SCREWS TIGHTEN. DO NOT OVER-TORQUE!

These devices shall be mounted on enclosures having adequate strength and thickness and with adequate spacing provided. Seal rating is based on mounting to a surface that is clean, flat and smooth.



PIC RATINGS/SPECIFICATIONS	
VOLTS:	9 - 30VDC
AMPS:	0.6A MAX
NEMA/UL EN 60529:	4, 12 IP65
PANEL THICKNESS:	5.0mm max
MOUNTING SCREW TORQUE:	0.8N-m
TERMINAL BLOCK TORQUE:	0.5N-m
INCOMING POWER WIRE SIZE:	0.25 - 2.5 sq mm / 24-12AWG
WIRE STRIP LENGTH:	7 - 8 mm



SLIDE LATCH TO OPEN/CLOSE
ROTATE LOCK TO LOCK CLOSED

DETAIL A
SCALE 1 : 1

HOUSING MATERIALS	
BODY:	NICKEL PLATED ZINC
GASKETS:	PUR FIPG
FRONT COVER:	POLYCARBONATE
LATCH & LOCK:	PBT

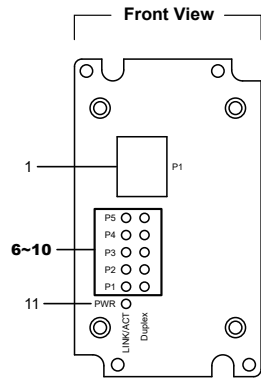
PROPRIETARY AND CONFIDENTIAL
THE INFORMATION CONTAINED IN THIS DRAWING IS THE SOLE PROPERTY OF MENCOM CORPORATION. ANY REPRODUCTION IN PART OR AS A WHOLE WITHOUT THE WRITTEN PERMISSION OF MENCOM CORPORATION IS PROHIBITED.

UNLESS OTHERWISE SPECIFIED:	
DRAWN BY	DCG
DRAWN DATE	07/29/2019
CHECKED BY	GO
CHECK DATE	07/29/2019
COMMENTS:	
MATERIAL	
FINISH	
DO NOT SCALE DRAWING	

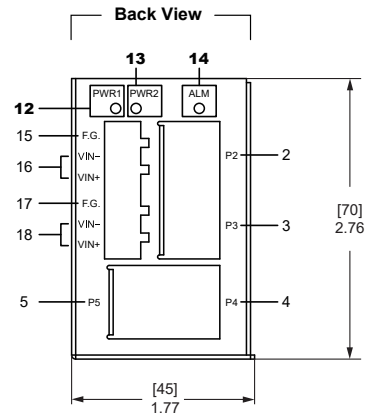
MENCOM CORPORATION		
TITLE: 5 PORT ENET SWITCH; LP1		
SIZE B	DWG. NO. LP1-E45UM-5	REV C
SCALE: 2:3	WEIGHT:	SHEET 1 OF 1

Power Input Requirements: 9-30 VDC, 0.6A Max

Product Layout & Dimensions



- 1~5 : 10/100 BASE-T(X) RJ45 ports
- 6~10 : 10/100 BASE-T(X) RJ45 LED
- 11~13 : Power Indication LED



- 14 : Alarm Indication LED
- 15~18 : 3 pins terminal block x 2
- 15 : Functional Ground
- 16 : Terminal of P1
- 17 : Functional Ground
- 18 : Terminal of P2

Pin Assignments and Connections

RJ45								
10/100BASE-T(X)								
Pin	1	2	3	4	5	6	7	8
Signal	T x +	T x -	R x +			R x -		

Pin / Signal	1	2	3
	F.G.	V-	V+

LED Indicators

#	LED	Color	State	Description
12 13	PWR1 PWR2	Green	On	Power is supplied through PWR1 and/or PWR2
			Off	Power is disconnected
14	ALM	Red	On	Either PWR1 or PWR2 terminal block is disconnected
			Off	PWR terminal blocks are connected and normal
6~10	Lan	Amber	On	Ethernet is linked at 100Mbps
			Off	Ethernet is linked at 10Mbps or not linked
		Green	On	Ethernet is connected
			Blinking	Data is being transmitted
			Off	Ethernet is disconnected